



**Tricia Wright**

**The Perennial Village; Morning Glory/Evening Splendor**

Morning Glory: floor-to-ceiling artwork for east window (handpainted acrylic and ink on translucent mylar)



**Tricia Wright**

**The Perennial Village; Morning Glory/Evening Splendor**

Evening Splendor: floor-to-ceiling artwork for west window (handpainted acrylic and ink on translucent mylar)

# Tricia Wright

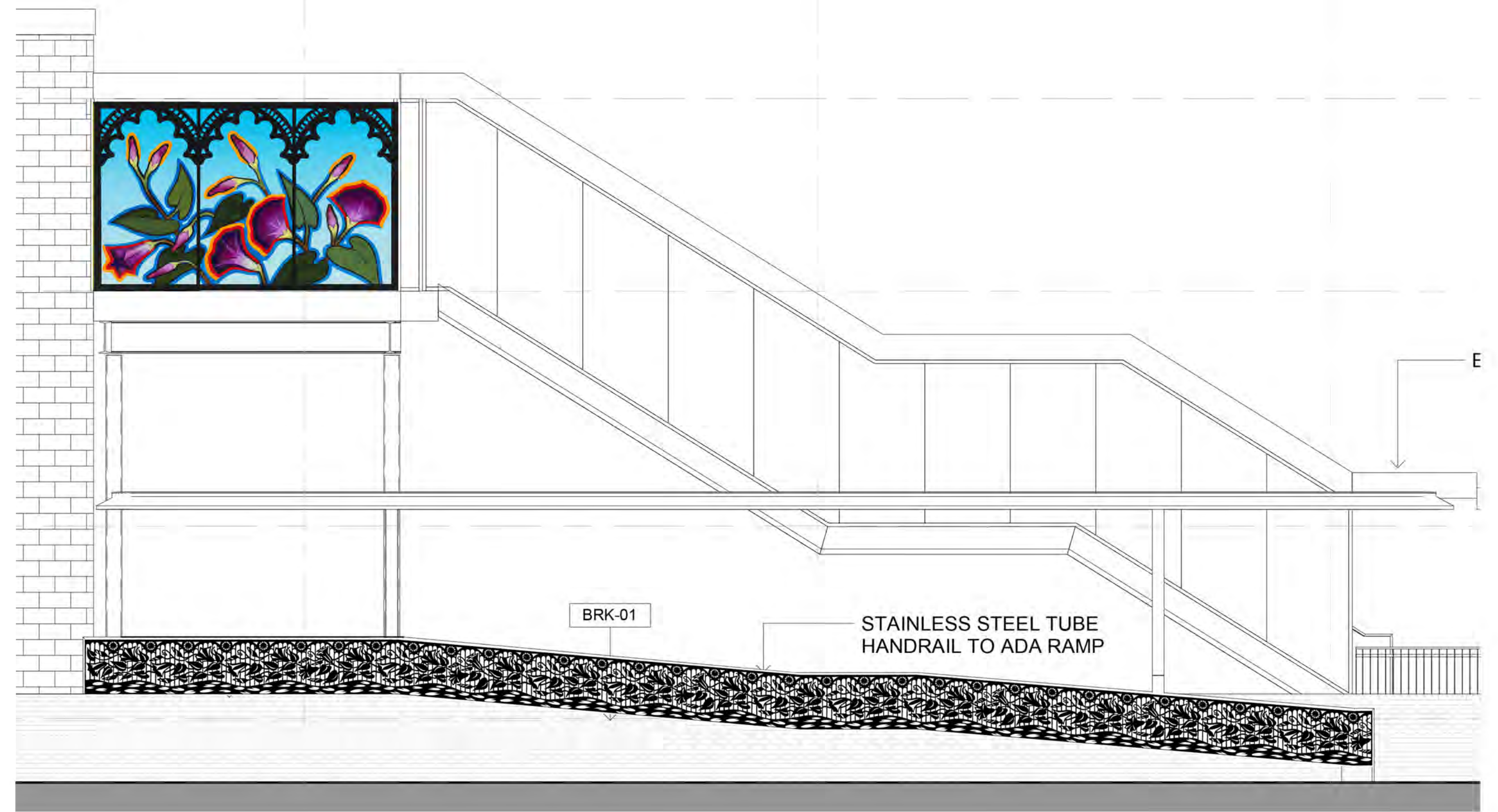
## The Perennial Village; Morning Glory, Evening Splendor

The concept of my proposal is the perennial rhythm of growth and renewal of village life, not only daily cycles of the morning commute and evening return, but the regenerative power of a tight-knit community as generation after generation returns to Crestwood to raise a family in their own childhood village.

The window artworks celebrate the diurnal rhythms of the village; on the east window Morning Glories are silhouetted against the clear light blue of a morning sky, on the west window, Evening Primroses radiate against the deep rich blue of the evening sky. The morning window pops with energy, the evening window glows with warmth. The east/west emphasis acknowledges both communities using Crestwood station, marking it as a physical and symbolic crossroads.

Ornate arched window frames allude to late Victorian architecture, notable in the village, and to Crestwood's historically significant ecclesiastical architecture; the luminous paintings of native flowering perennials serve as secular stained glass windows, celebrating the vitality and regenerative growth of the village and the natural beauty of its surroundings.

The artwork for the metal ADA ramp evokes Victorian wrought-iron fence design, interspersed with clock faces that reinforce the diurnal rhythms of the station and of village life. The fence is intertwined with morning glory, making a strong visual connection to the east window directly above. The element of water brings a fluid sense of movement to the ramp; likewise, shadows cast by the metal panels echo the nature trail alongside the Bronx River on the west side of the station.



INDIVIDUAL CUT-OUT METAL PANEL WIDTH

