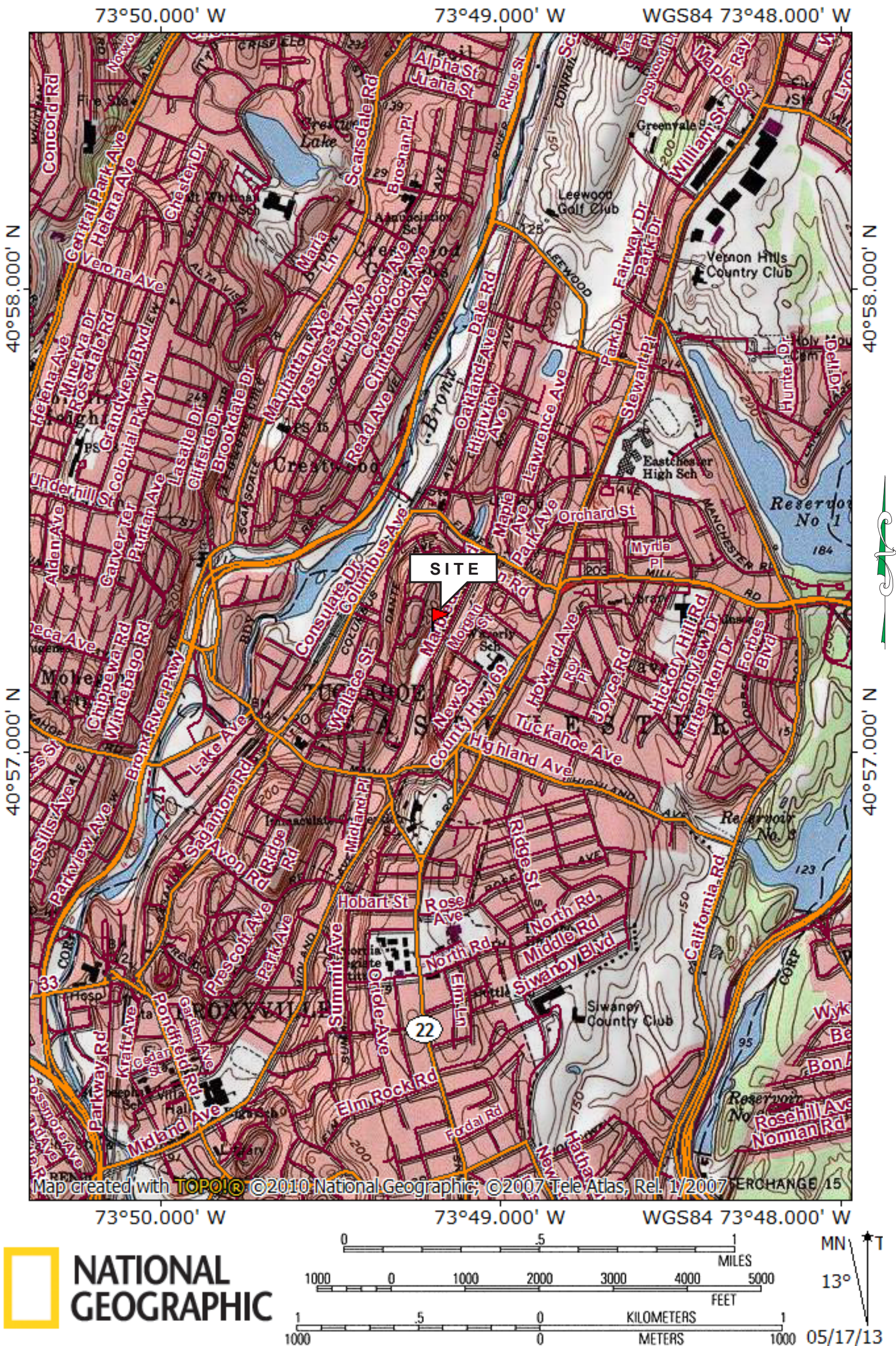


FIGURE 1  
SITE LOCATION MAP

109-125 MARBLEDALE ROAD  
TUCKAHOE, NEW YORK





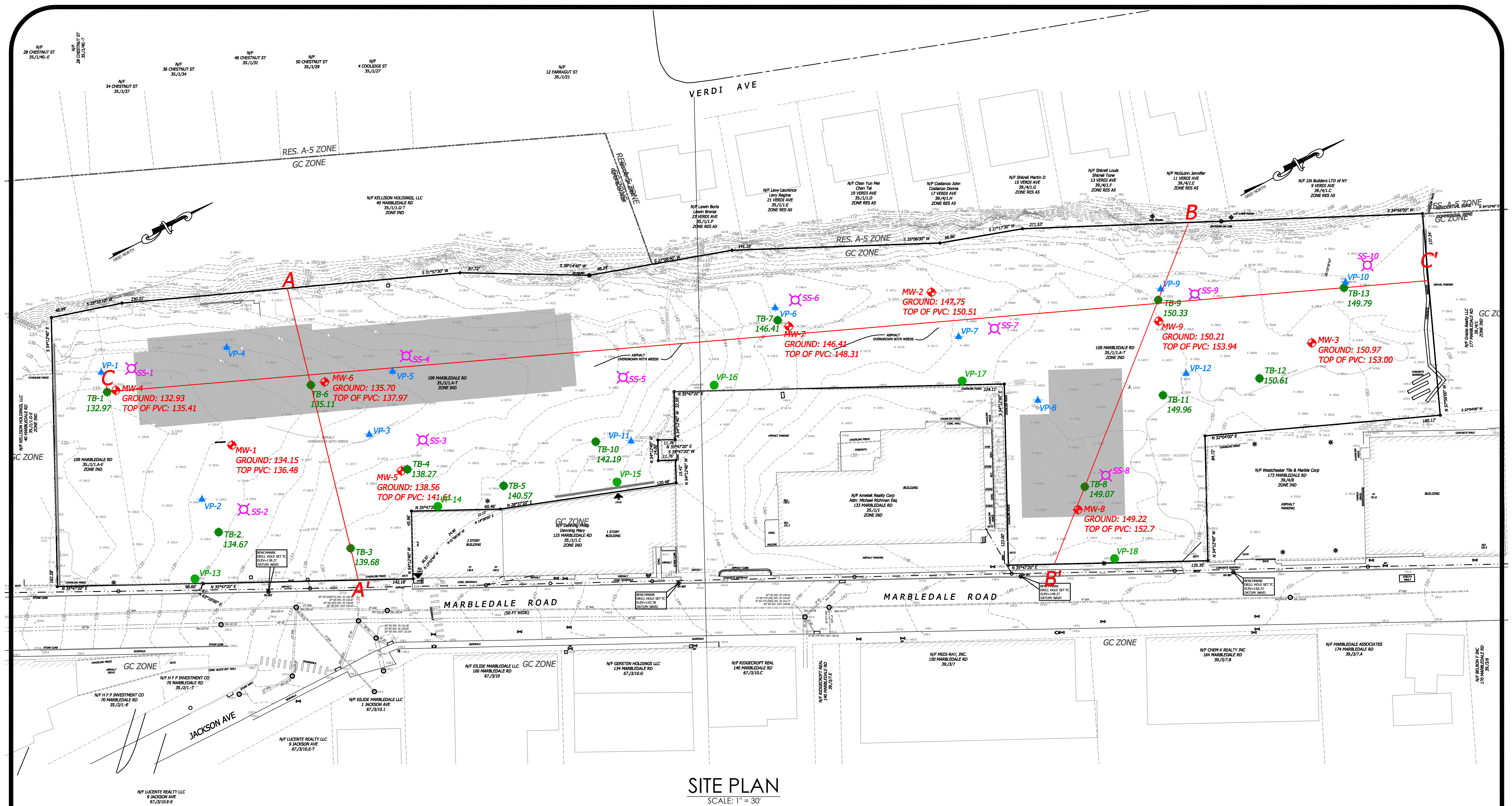


FIGURE ADAPTED FROM SURVEY BY MR. MICHAEL W. FINKBEINER

109-125 MARBLEDALE ROAD  
TUCKAHOE, NEW YORK

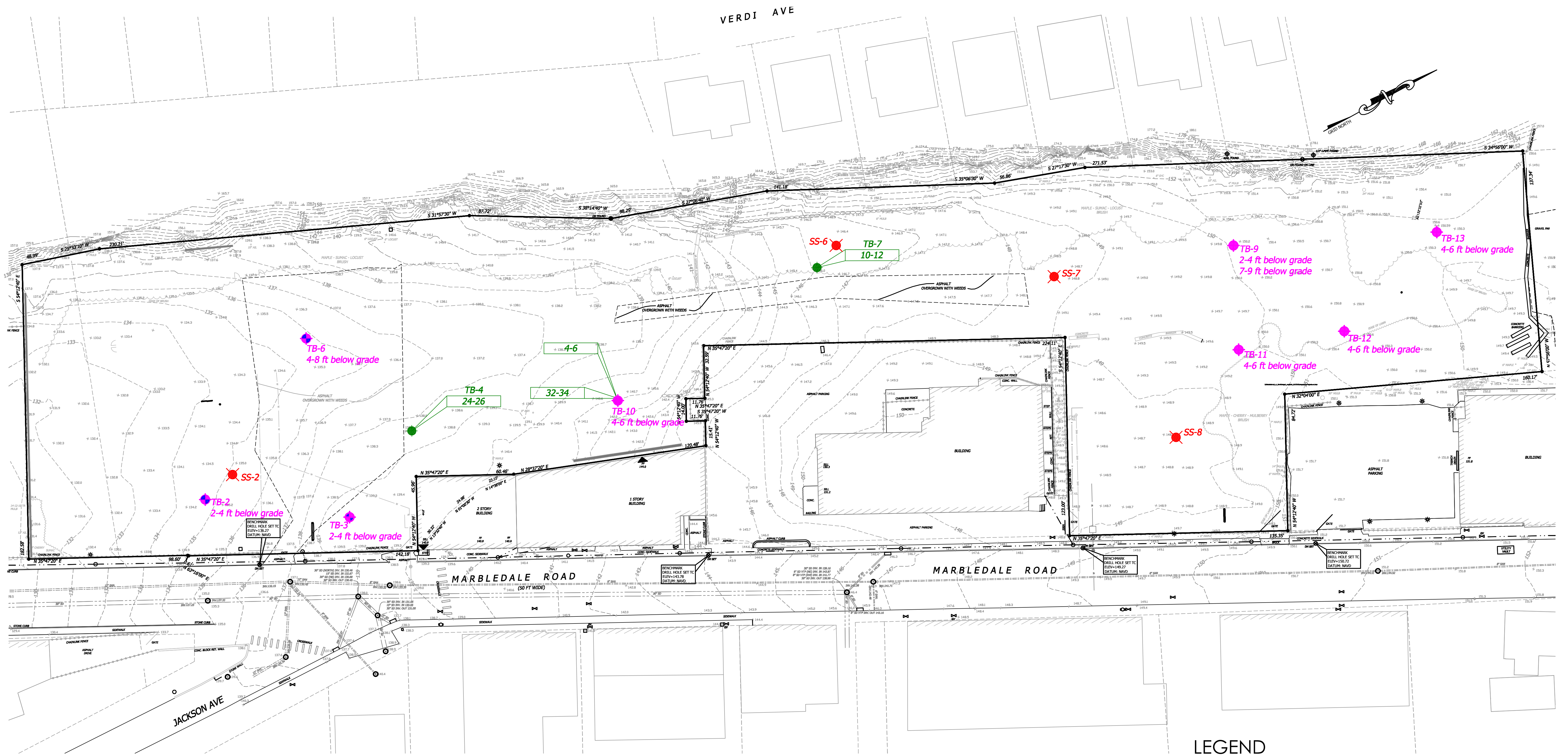
SITE PLAN

FIGURE 2



**HydroEnvironmental  
SOLUTIONS, INC**  
One Deans Bridge Road  
Somers, New York 10589





# SITE PLAN

SCALE: 1" = 30'

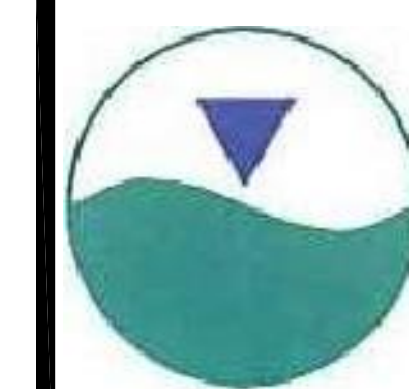
## LEGEND

- ft Below Grade PCB Hot Spot Location
- ✖ Surface Soil Sample locations for SVOCs Hot Spots
- ◆ Subsurface Soil Sample locations for SVOCs Hot Spots
- ◆ Subsurface Soil Sample locations for SVOCs and Metals Hot Spots

109-125 MARBLEDALE ROAD  
TUCKAHOE, NEW YORK

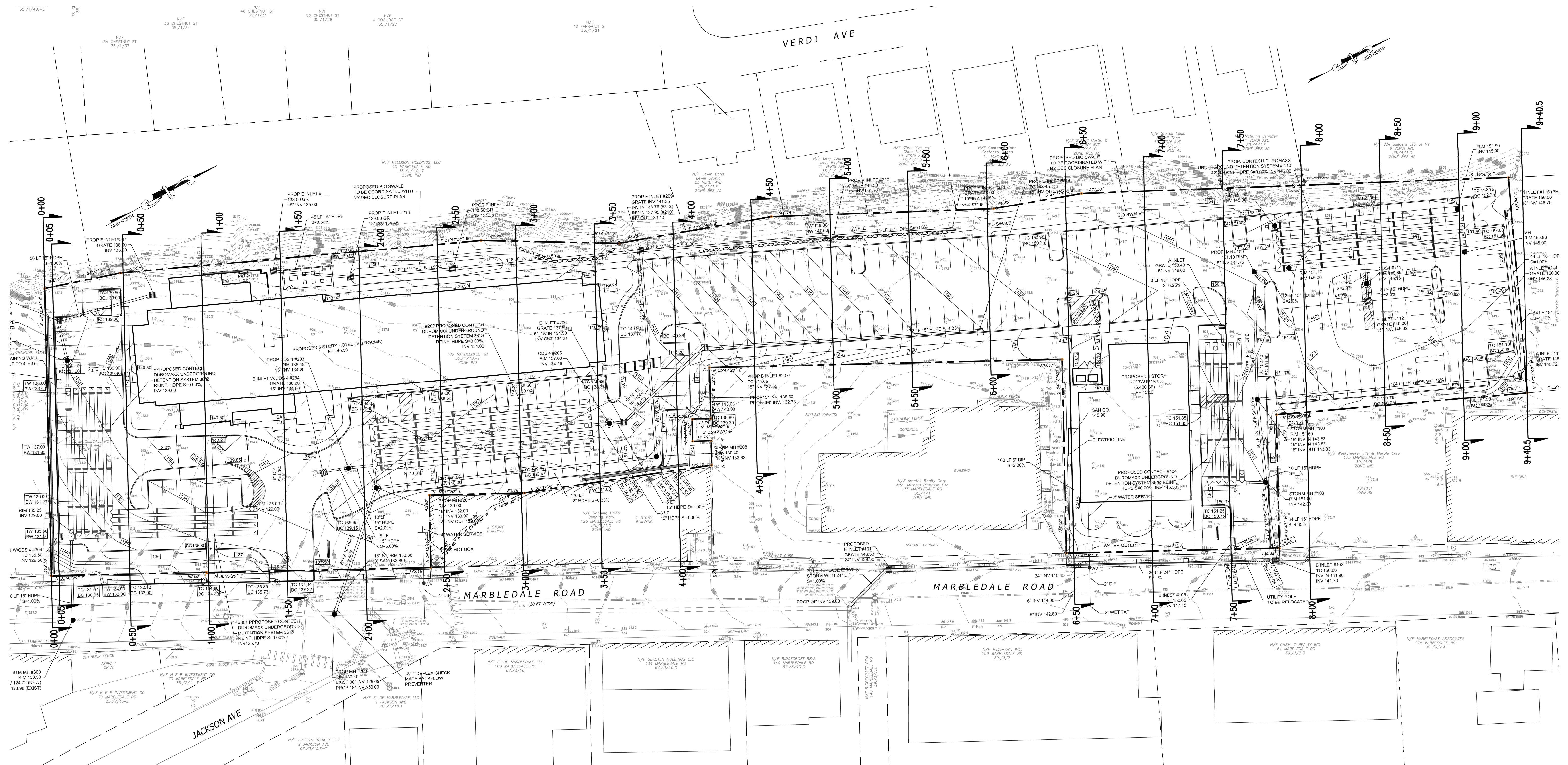
SITE PLAN SHOWING  
HOT SPOTS  
IN SOIL

FIGURE 3



**HydroEnvironmental  
SOLUTIONS, INC**  
One Deans Bridge Road  
Somers, New York 10589





# SITE PLAN

SCALE: 1" = 30'

FIGURE ADAPTED FROM PLAN BY SESI CONSULTING ENGINEERS, PC.

109-125 MARBLEDALE ROAD  
TUCKAHOE, NEW YORK

CROSS SECTION  
PLAN

FIGURE 4



**HydroEnvironmental  
SOLUTIONS, INC.**  
One Deans Bridge Road  
Somers, New York 10589



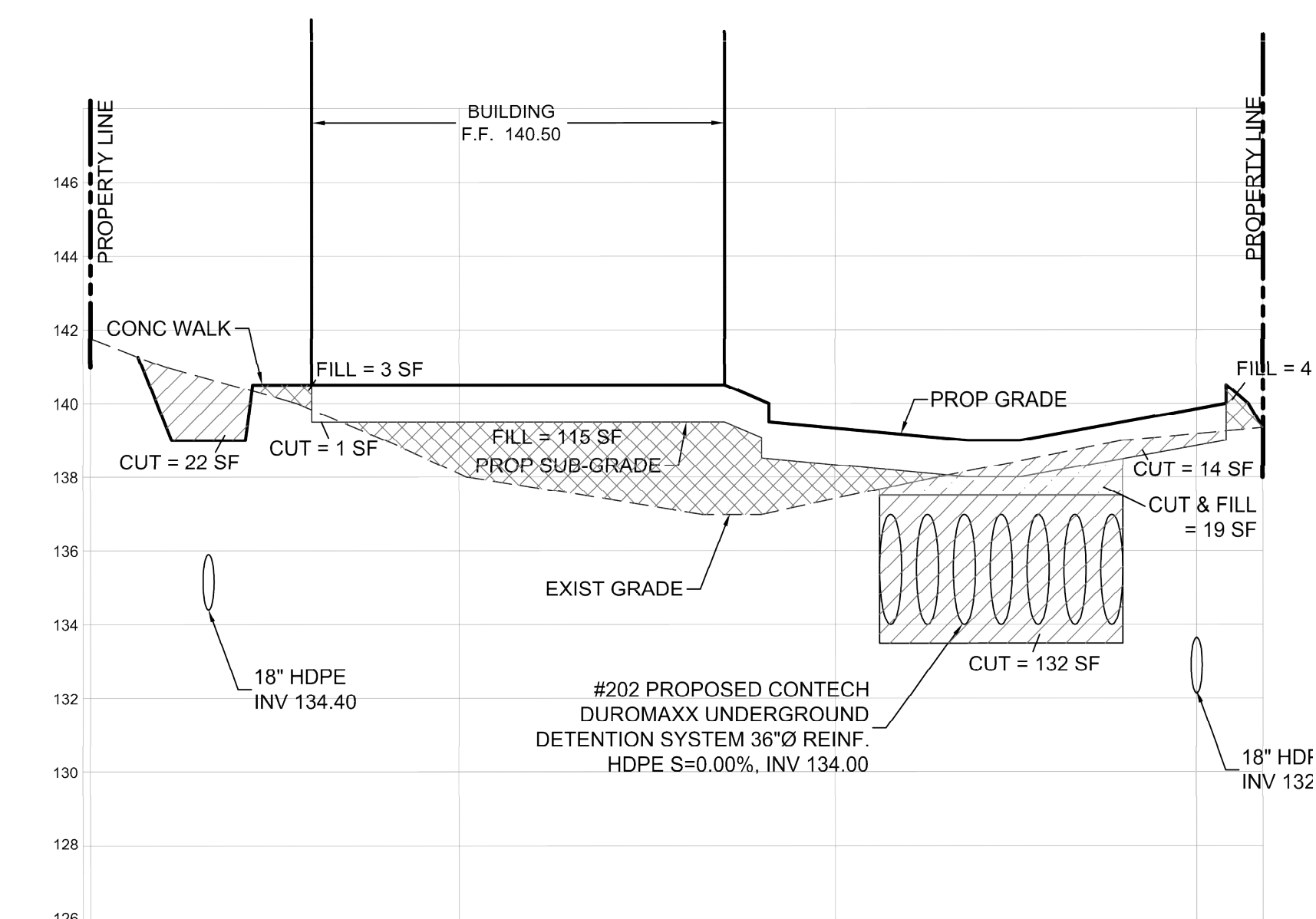
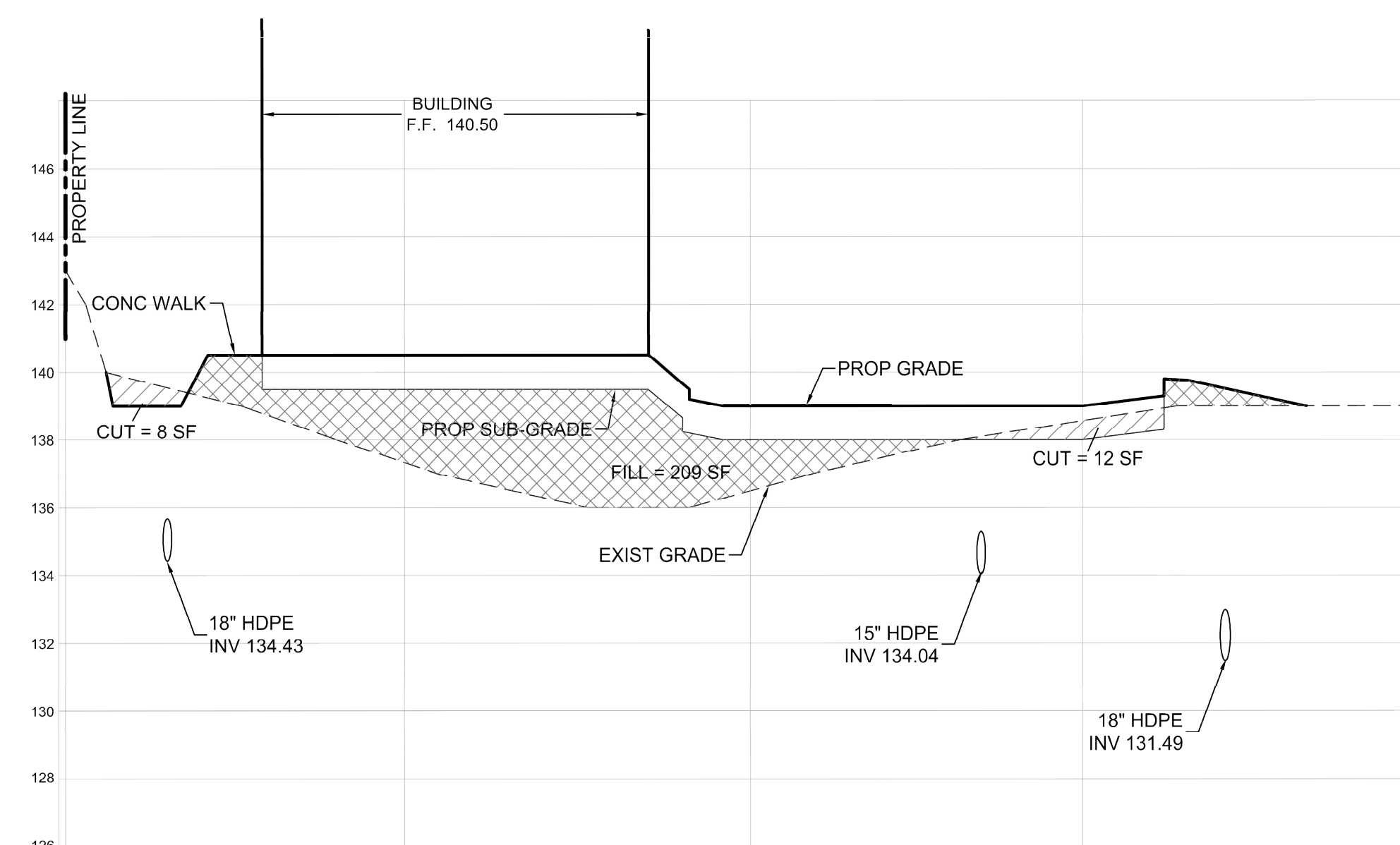
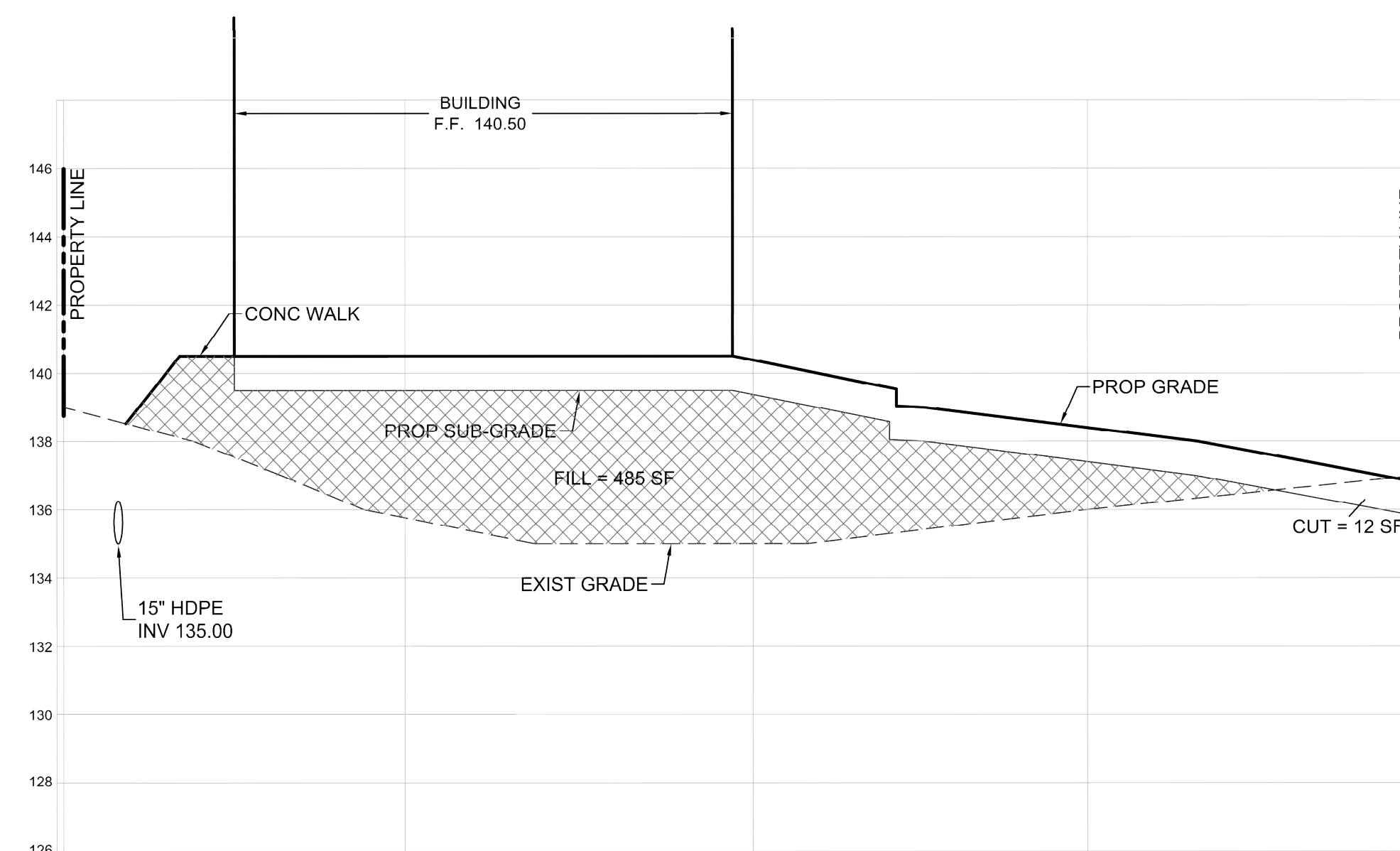
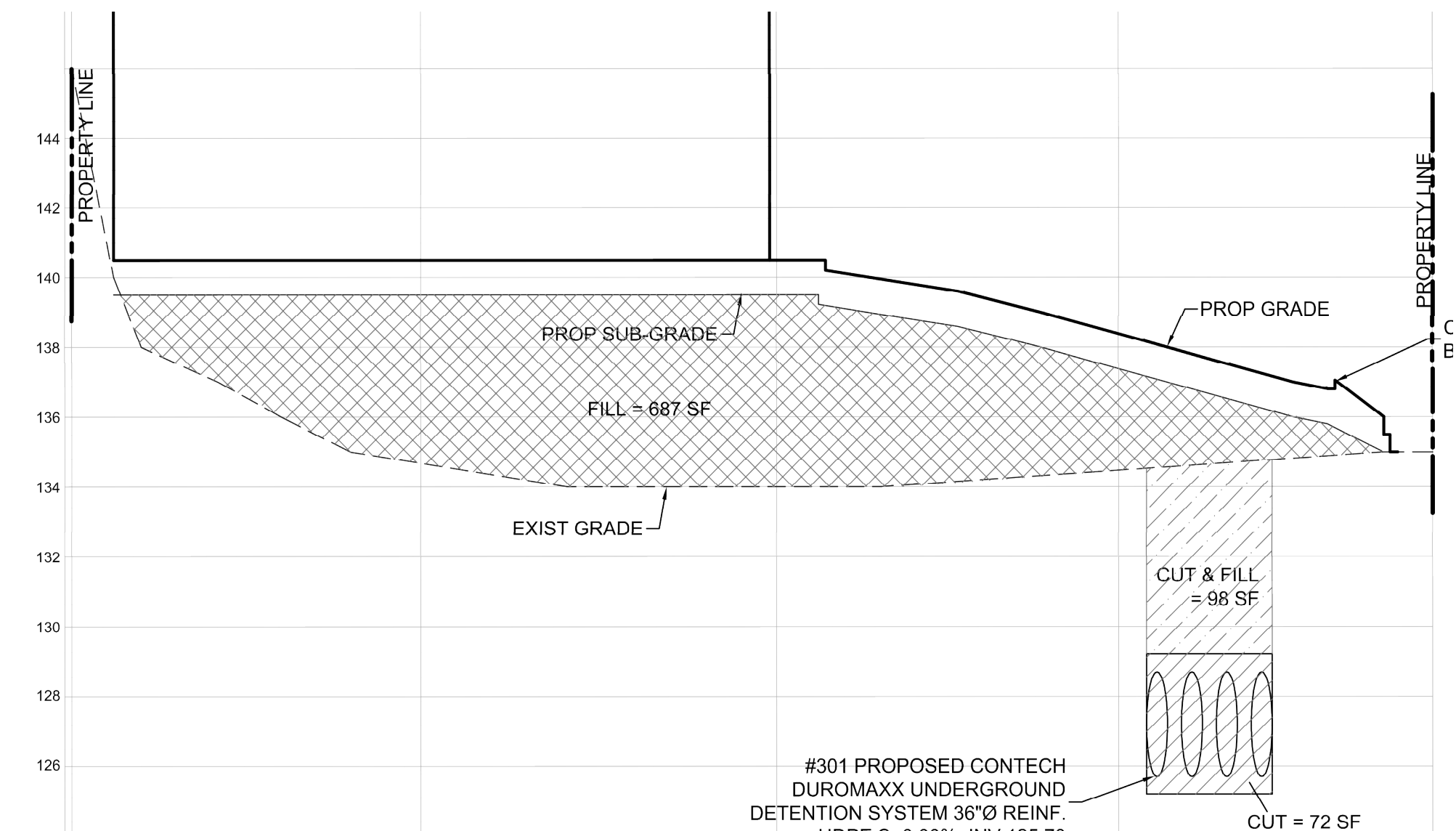
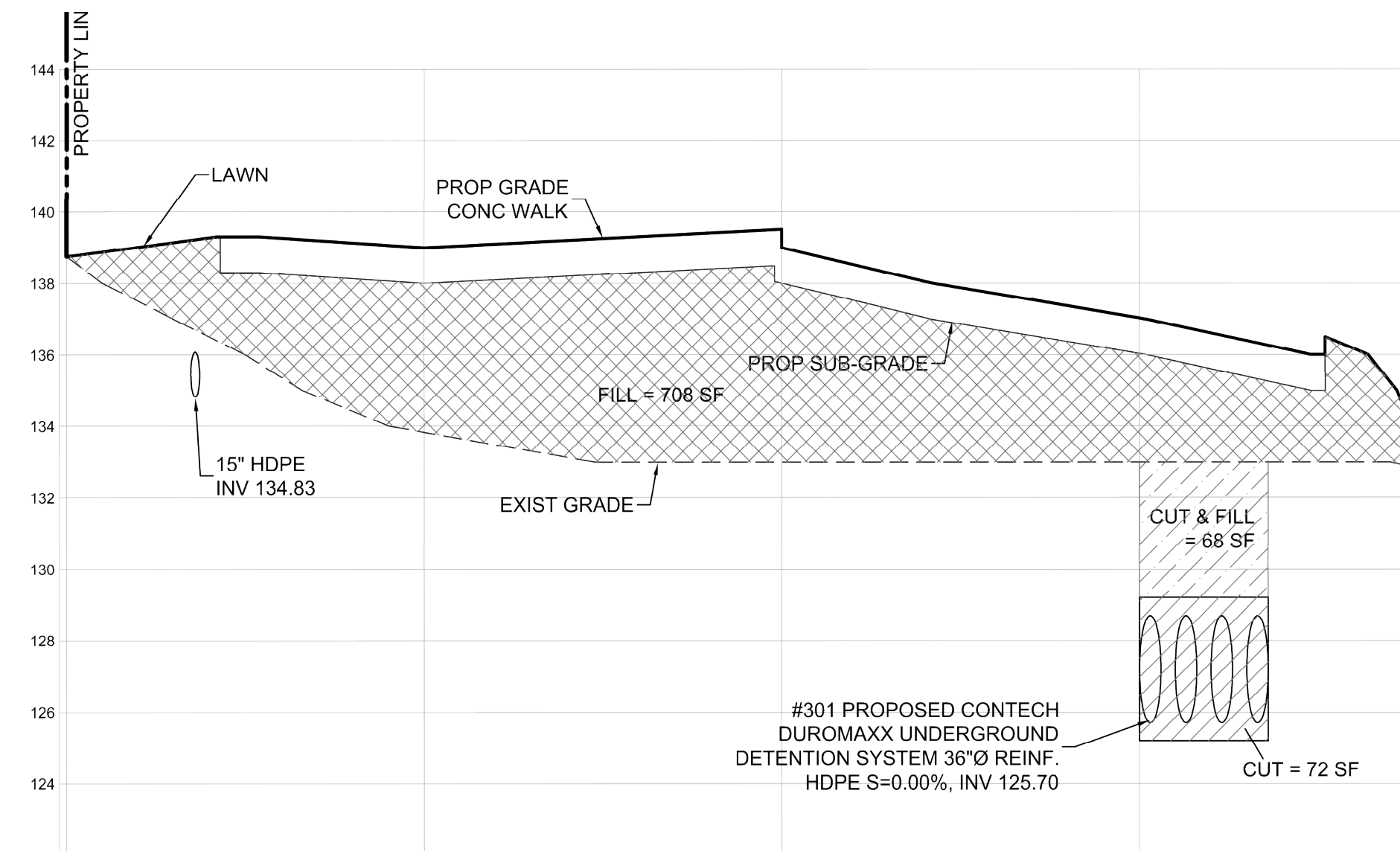
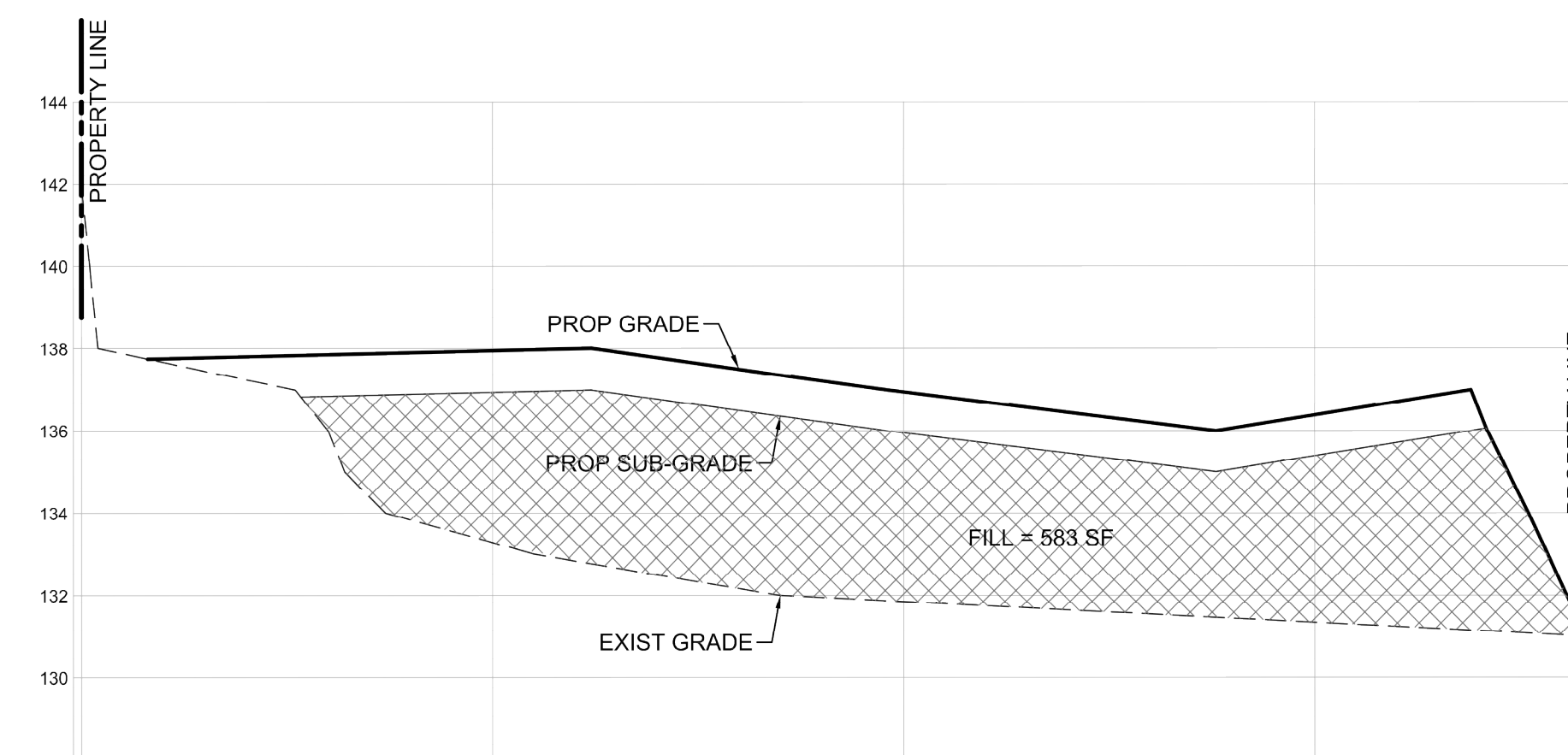


FIGURE ADAPTED FROM PLAN BY SESI CONSULTING ENGINEERS, PC.

109-125 MARBLEDAL ROAD  
TUCKAHOE, NEW YORK

CROSS SECTION DETAILS  
OF PROPOSED CUT AND  
FILL AREA

FIGURE 5A



**HydroEnvironmental**  
**SOLUTIONS, INC.**  
One Deans Bridge Road  
Somers, New York 10589



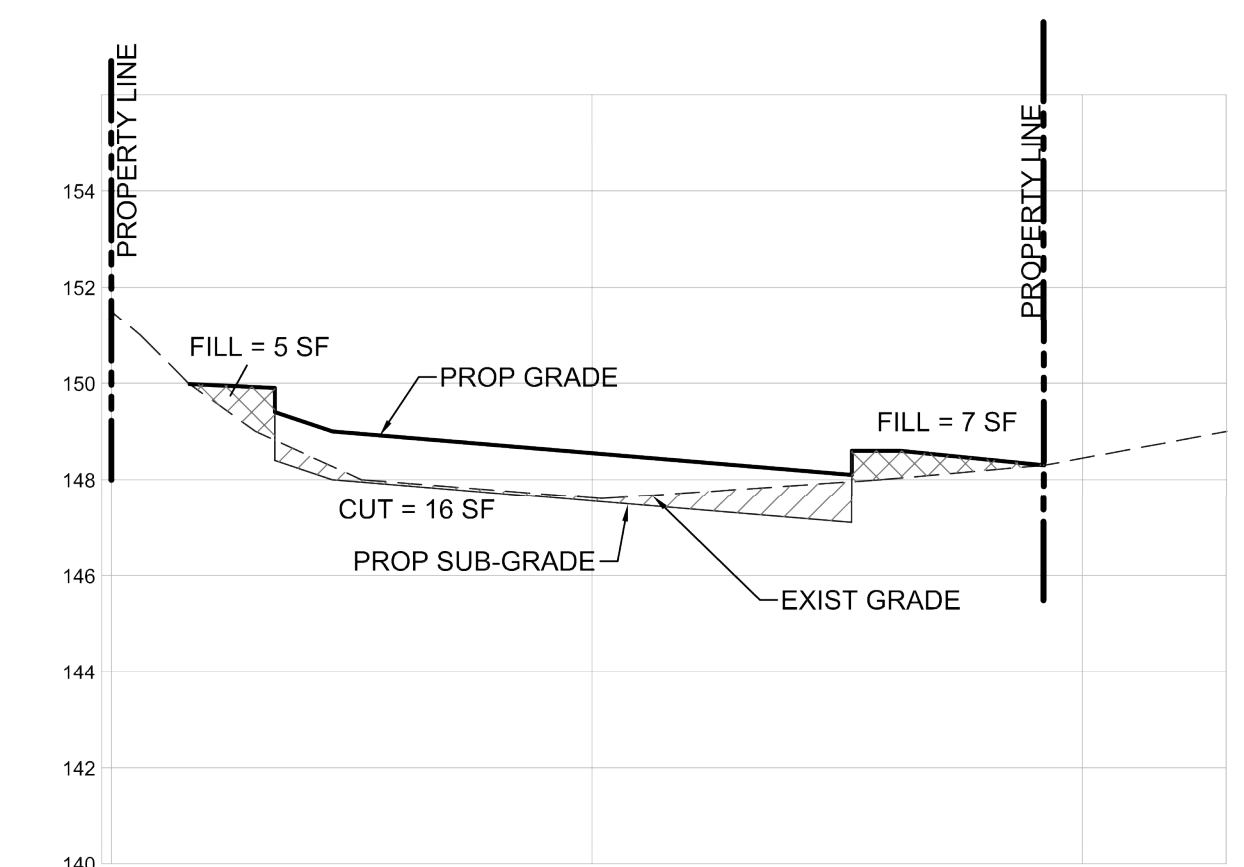
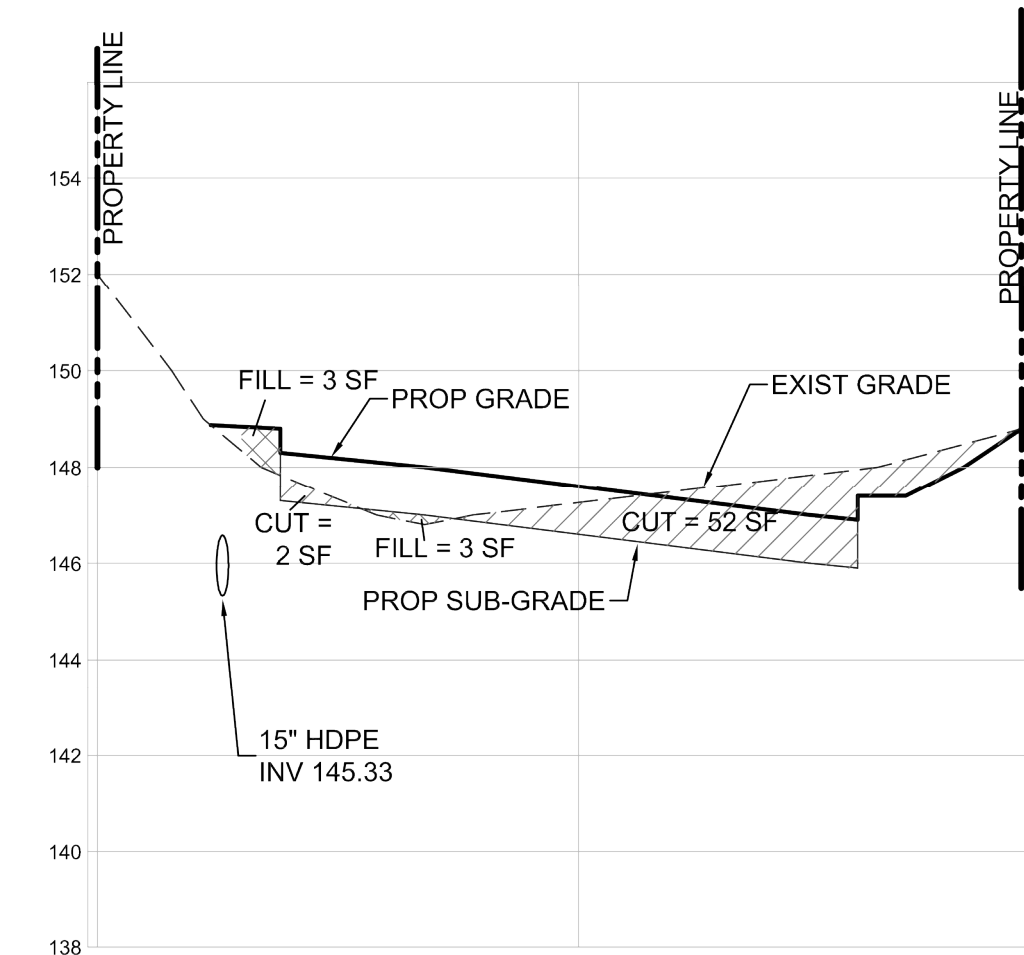
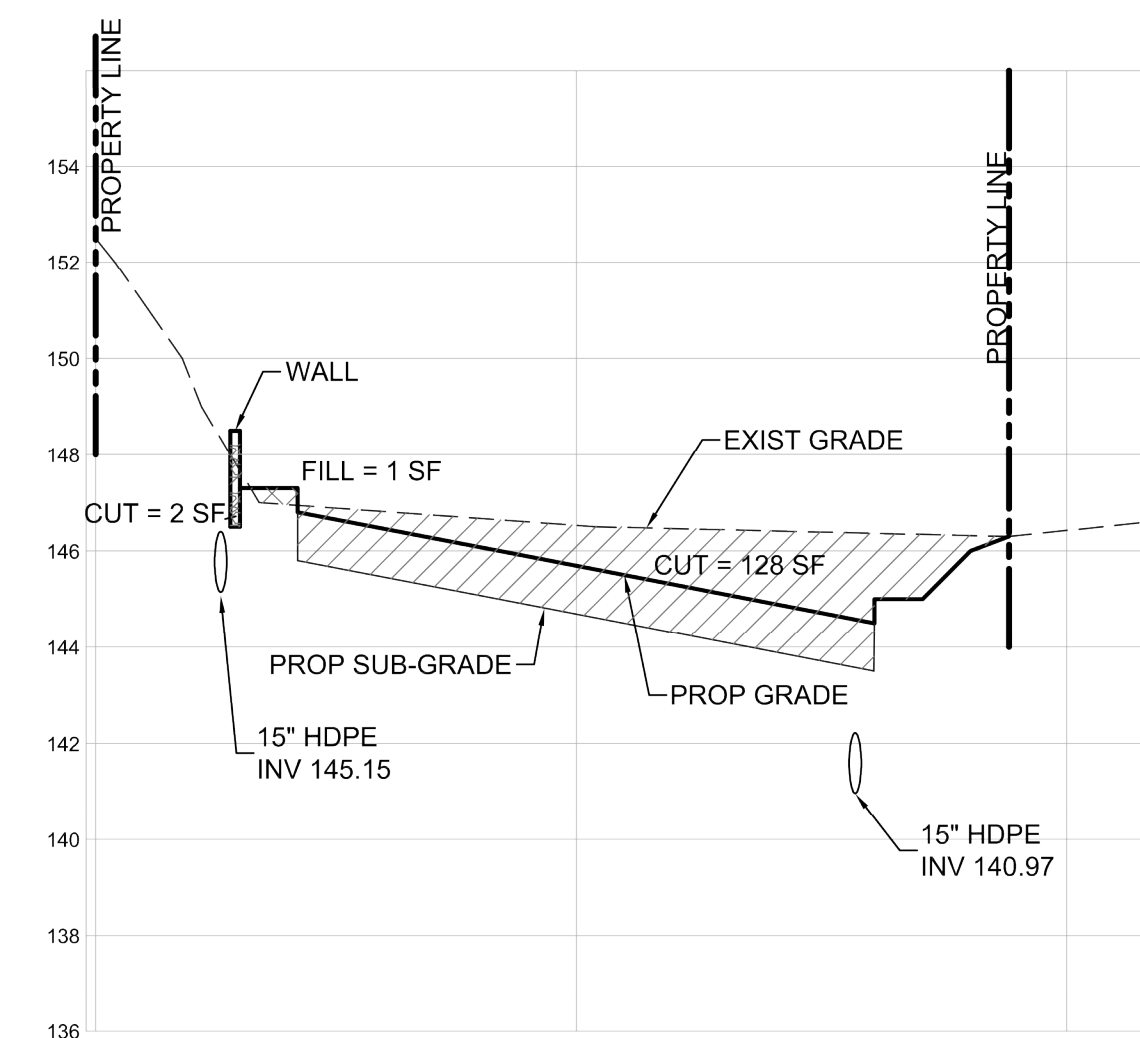
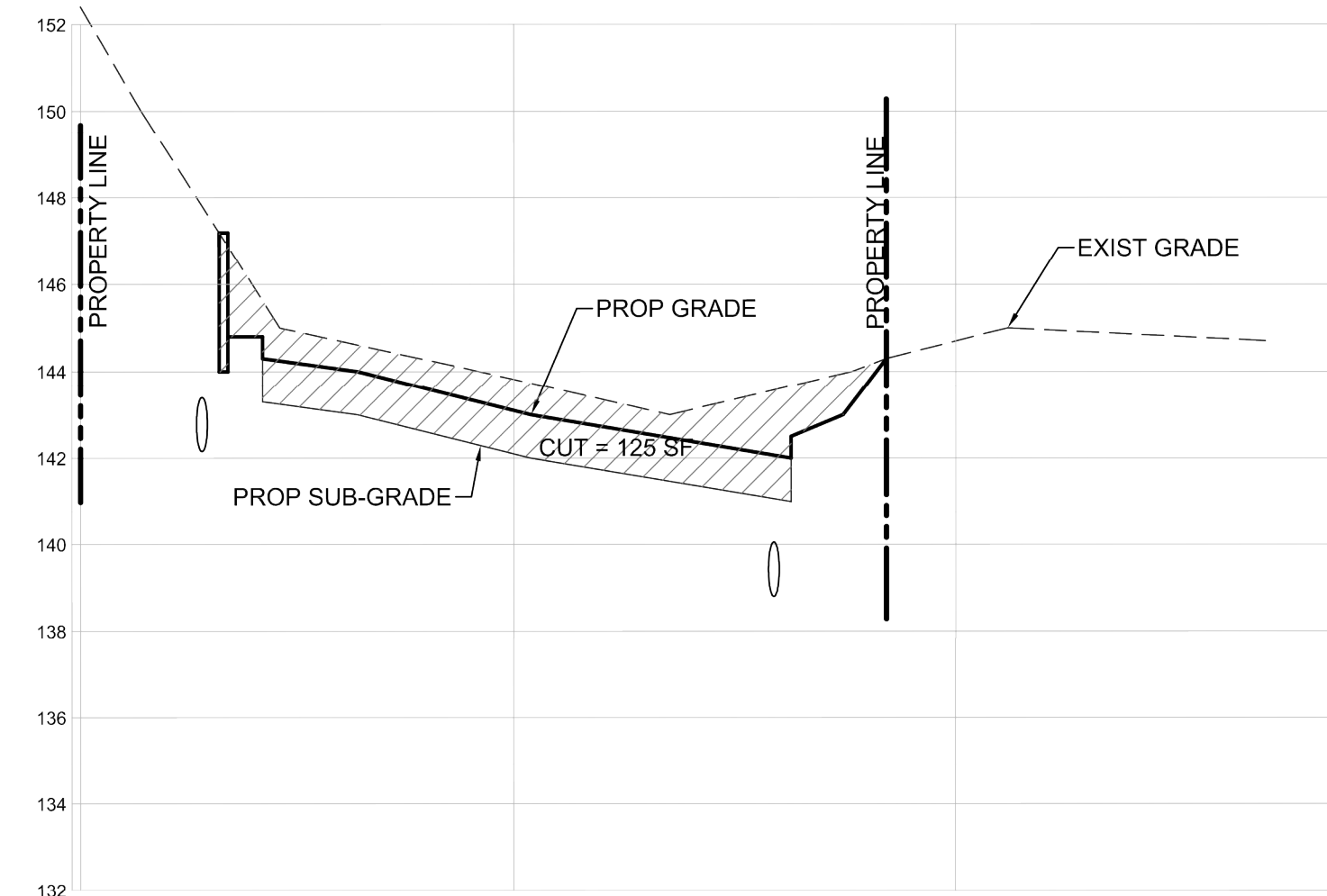
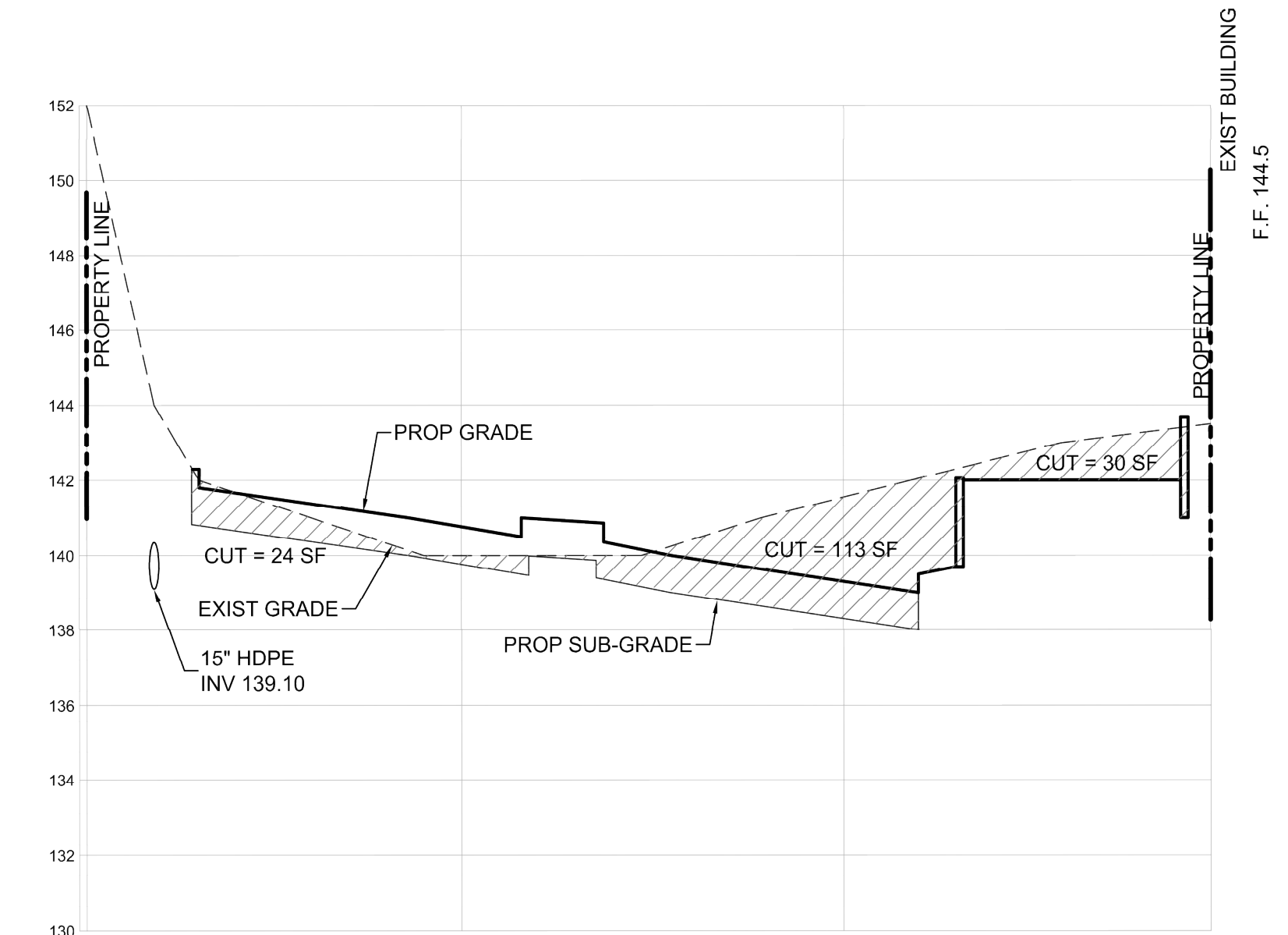
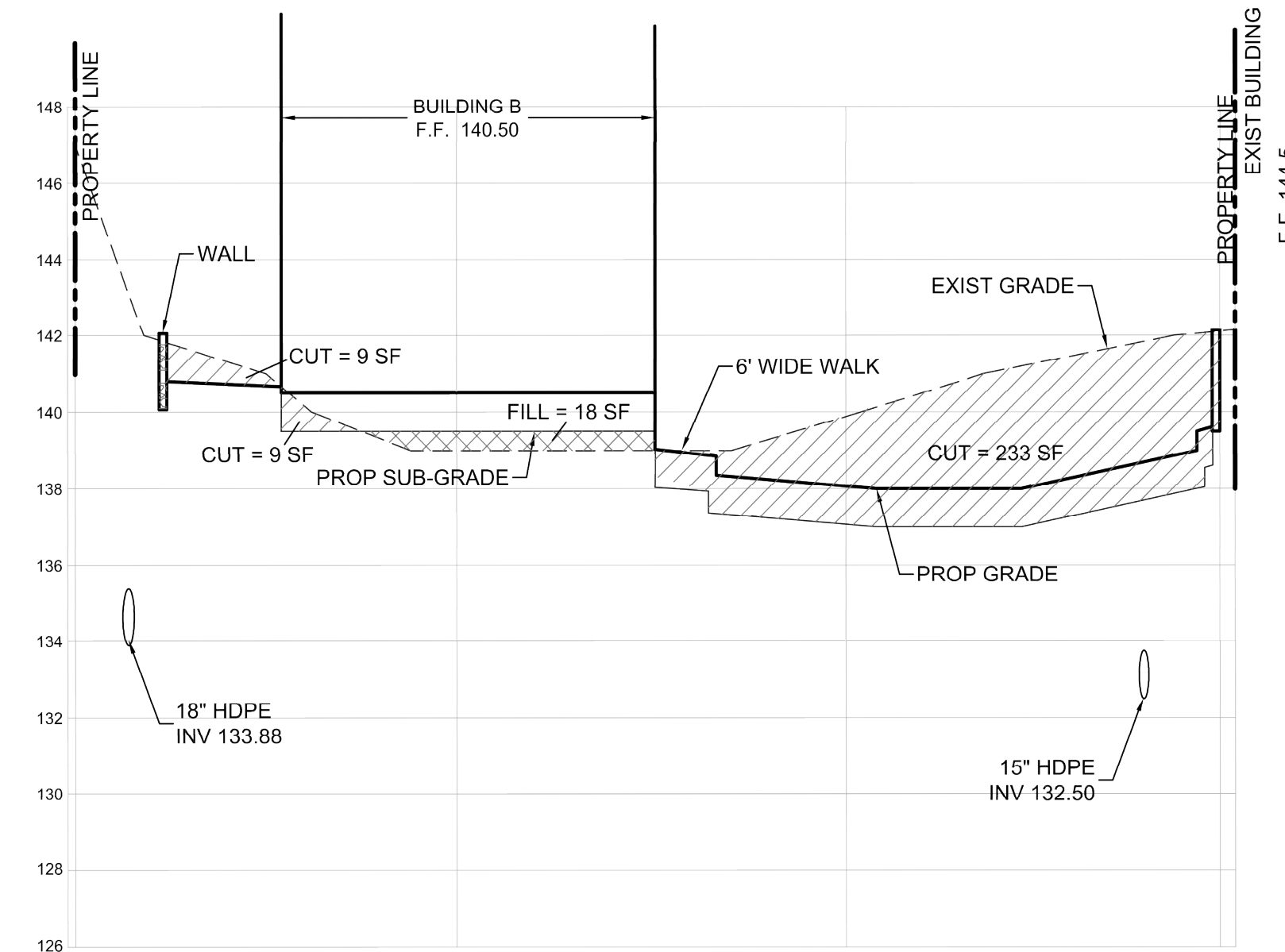
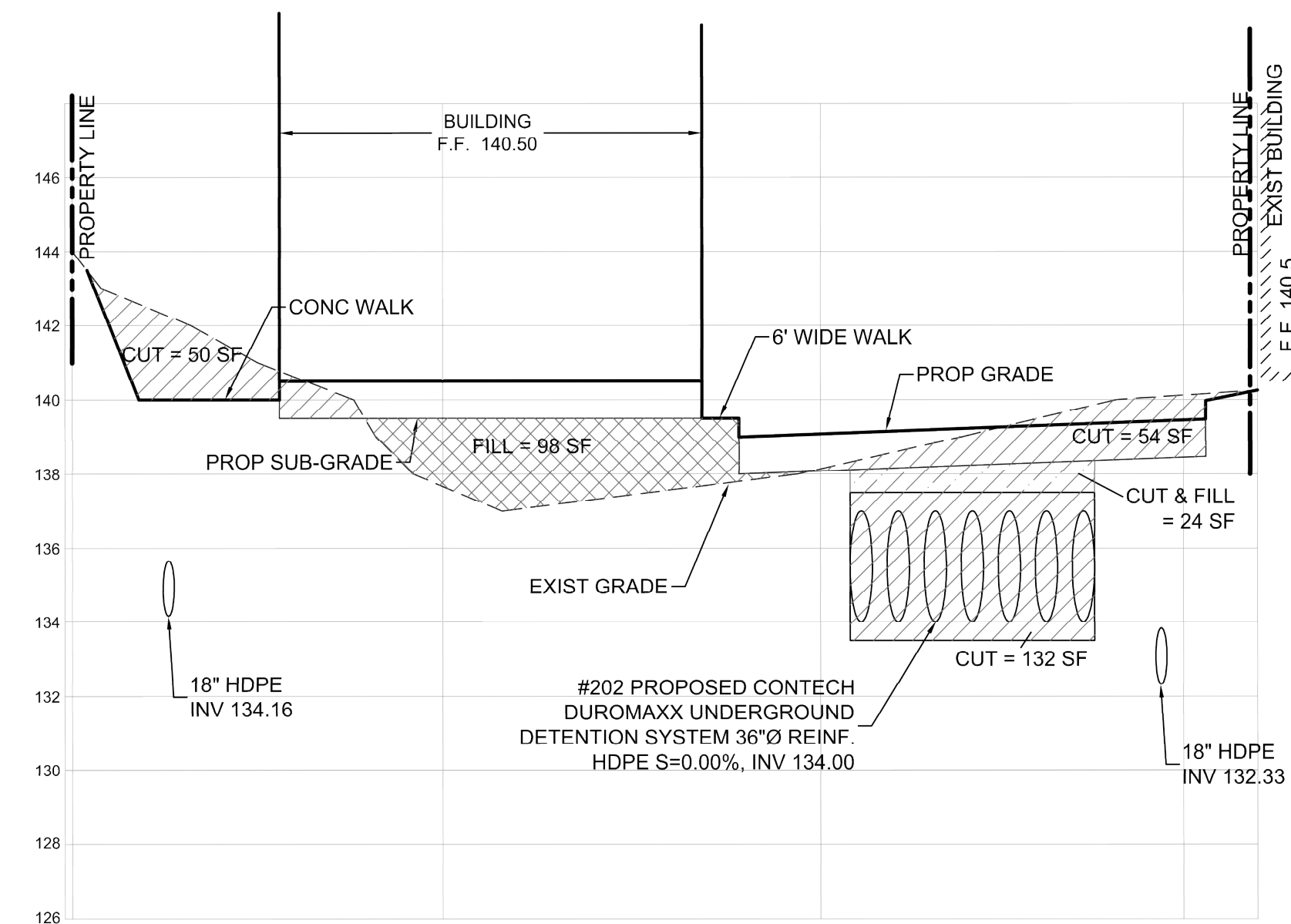


FIGURE ADAPTED FROM PLAN BY SESI CONSULTING ENGINEERS, PC.

109-125 MARBLEDAL ROAD  
TUCKAHOE, NEW YORK

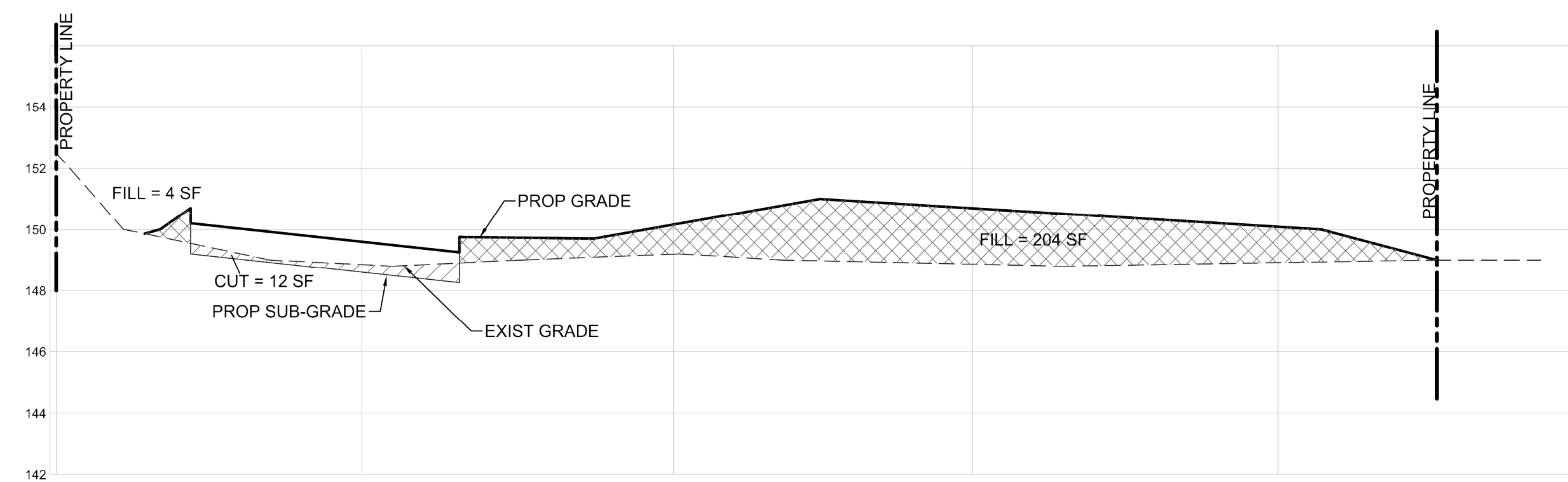
CROSS SECTION DETAILS  
OF PROPOSED CUT AND  
FILL AREA

FIGURE 5B

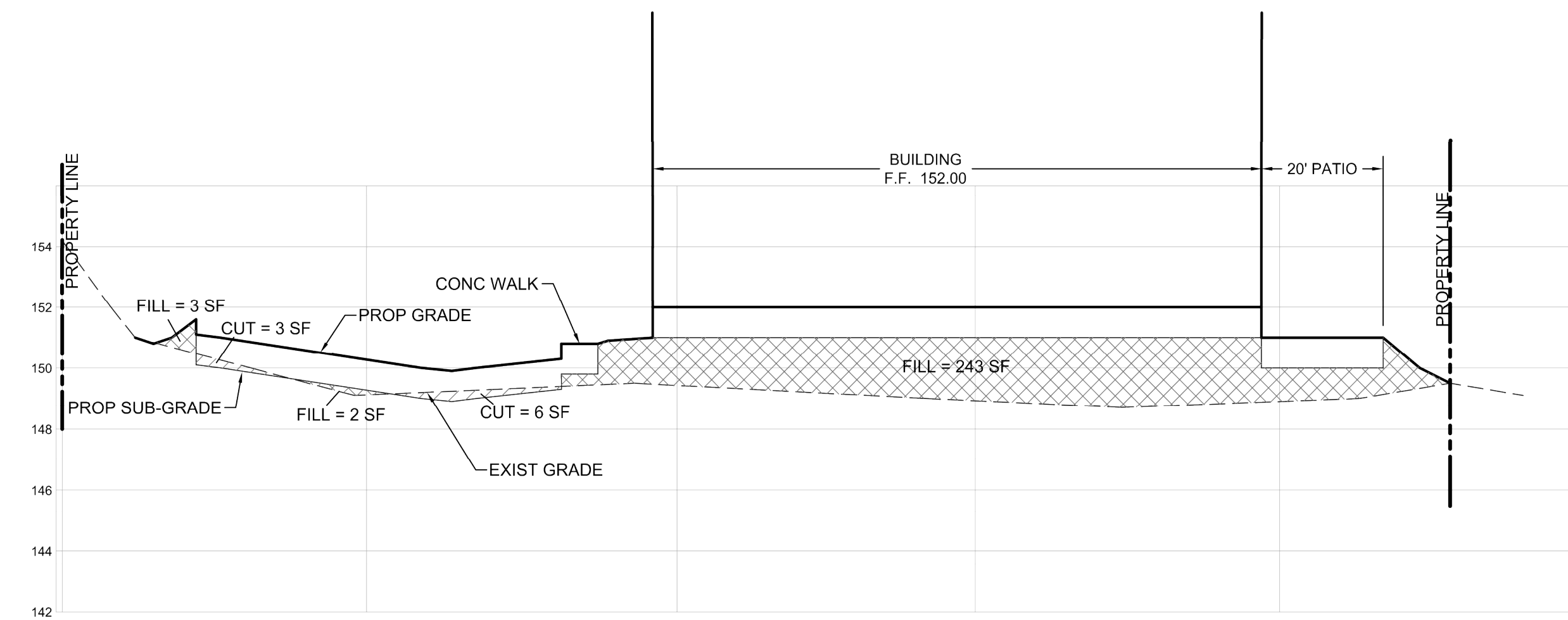


**HydroEnvironmental**  
**SOLUTIONS, INC.**  
One Deans Bridge Road  
Somers, New York 10589

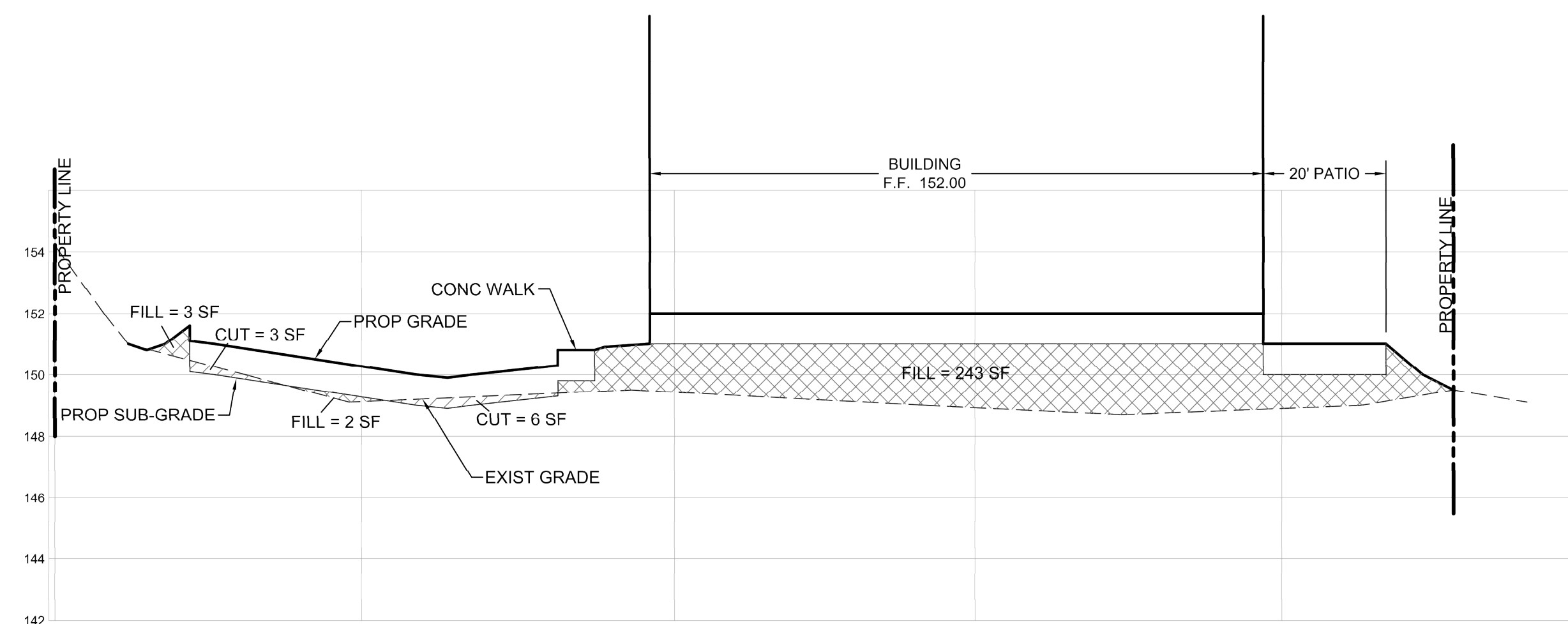




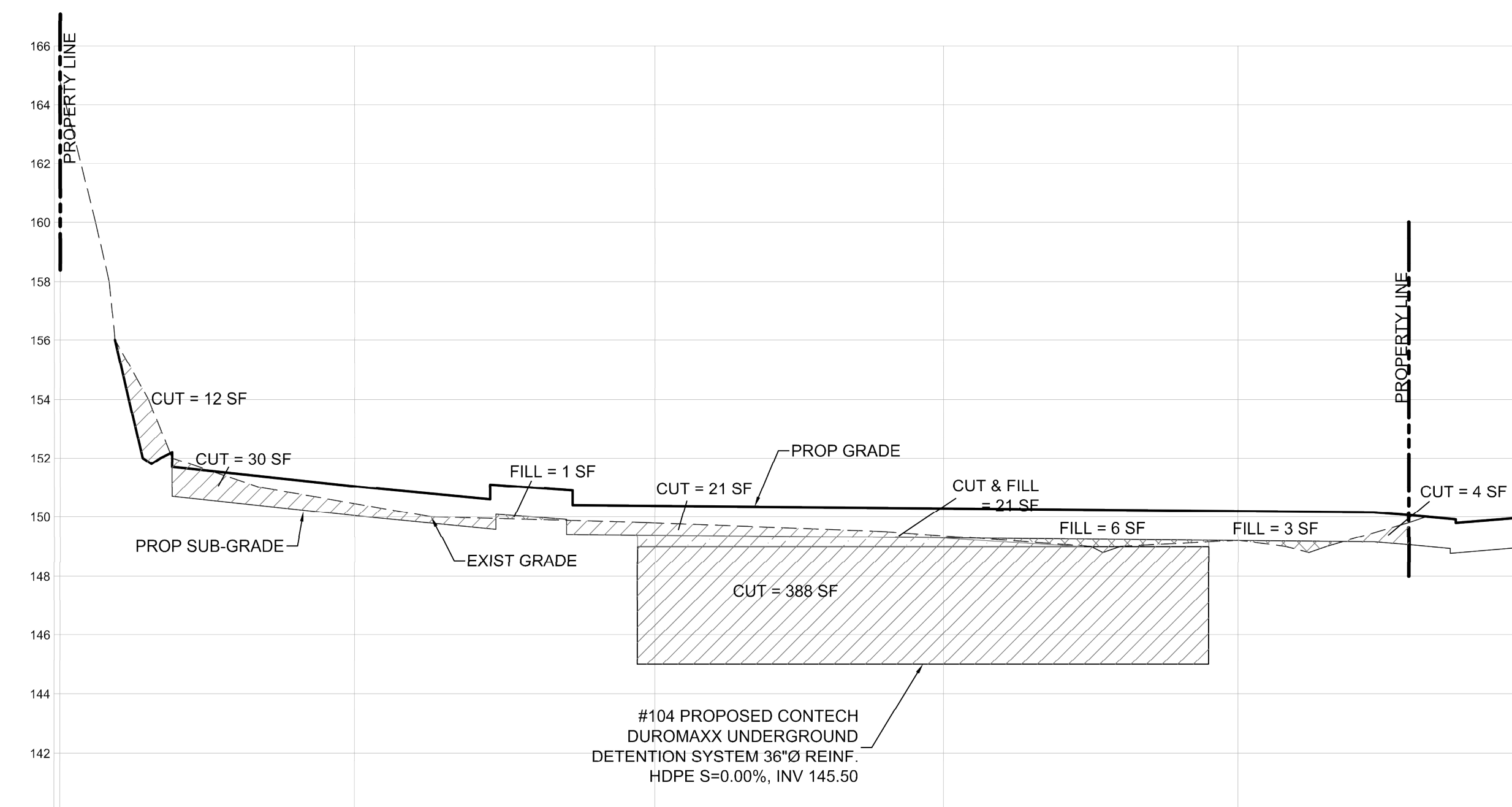
**STA 6+50 PROFILE**  
SCALE: H:1"=20', V: 1" = 4'



**STA 7+00 PROFILE**  
SCALE: H:1"=20', V: 1" = 4'



**STA 7+00 PROFILE**  
SCALE: H:1"=20', V: 1" = 4'



**STA 7+50 PROFILE**  
SCALE: H:1"=20', V: 1" = 4'

FIGURE ADAPTED FROM PLAN BY SESI CONSULTING ENGINEERS, PC.

109-125 MARBLEDALE ROAD  
TUCKAHOE, NEW YORK

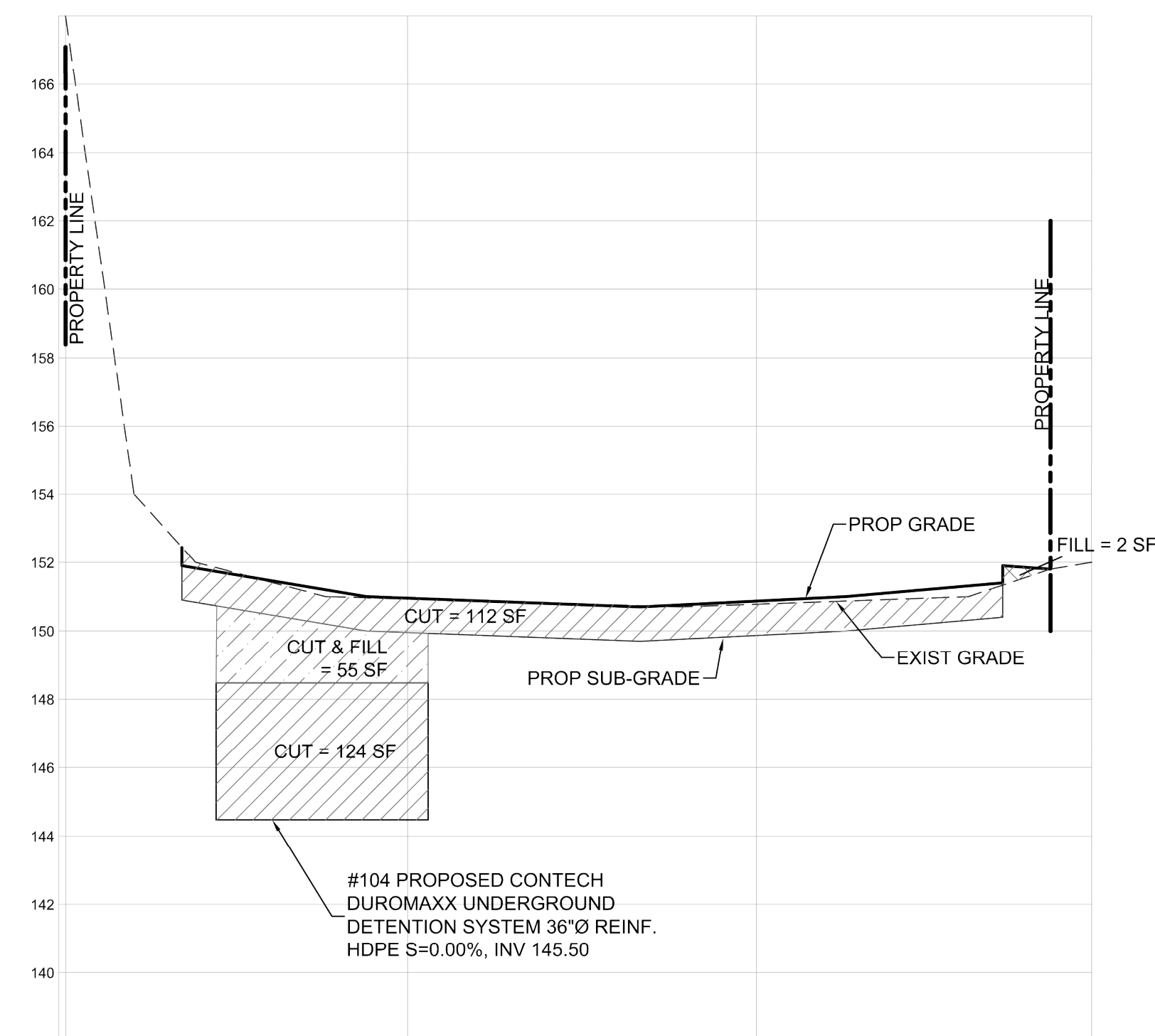
CROSS SECTION DETAILS  
OF PROPOSED CUT AND  
FILL AREA

FIGURE 6A

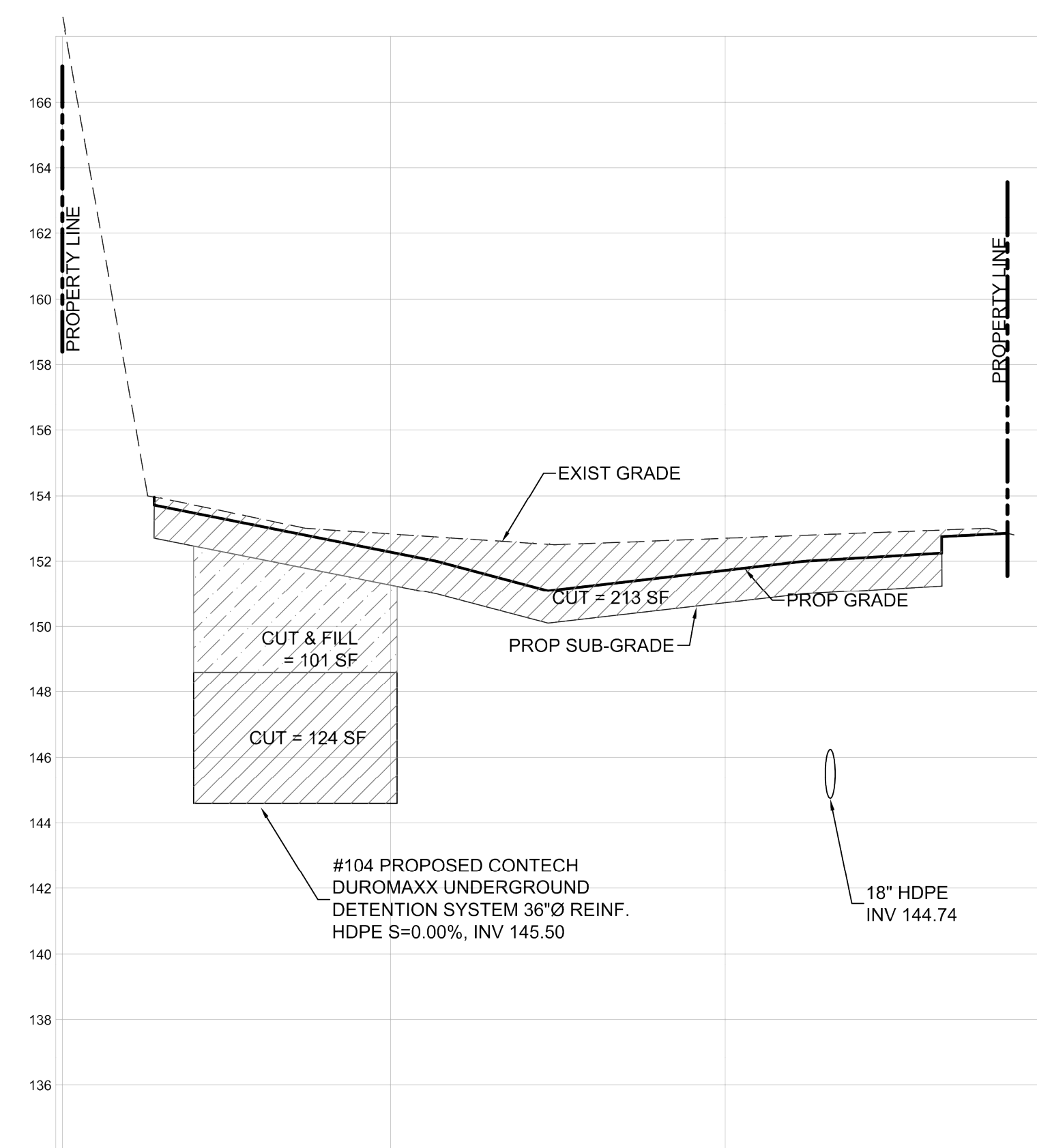


**HydroEnvironmental**  
**SOLUTIONS, INC.**  
One Deans Bridge Road  
Somers, New York 10589



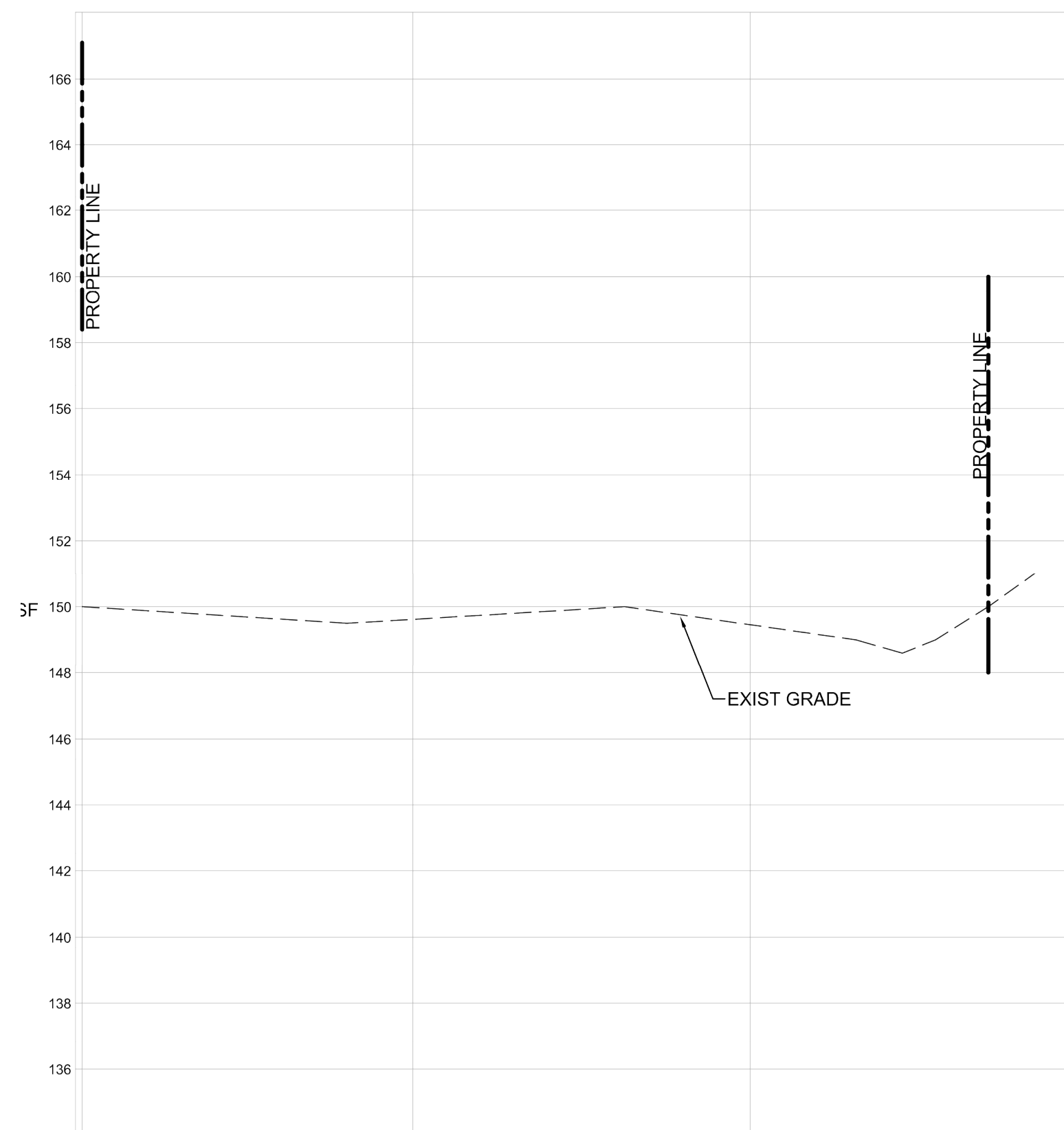


STA 8+00 PROFILE  
SCALE: H:1"=20', V: 1" = 4'

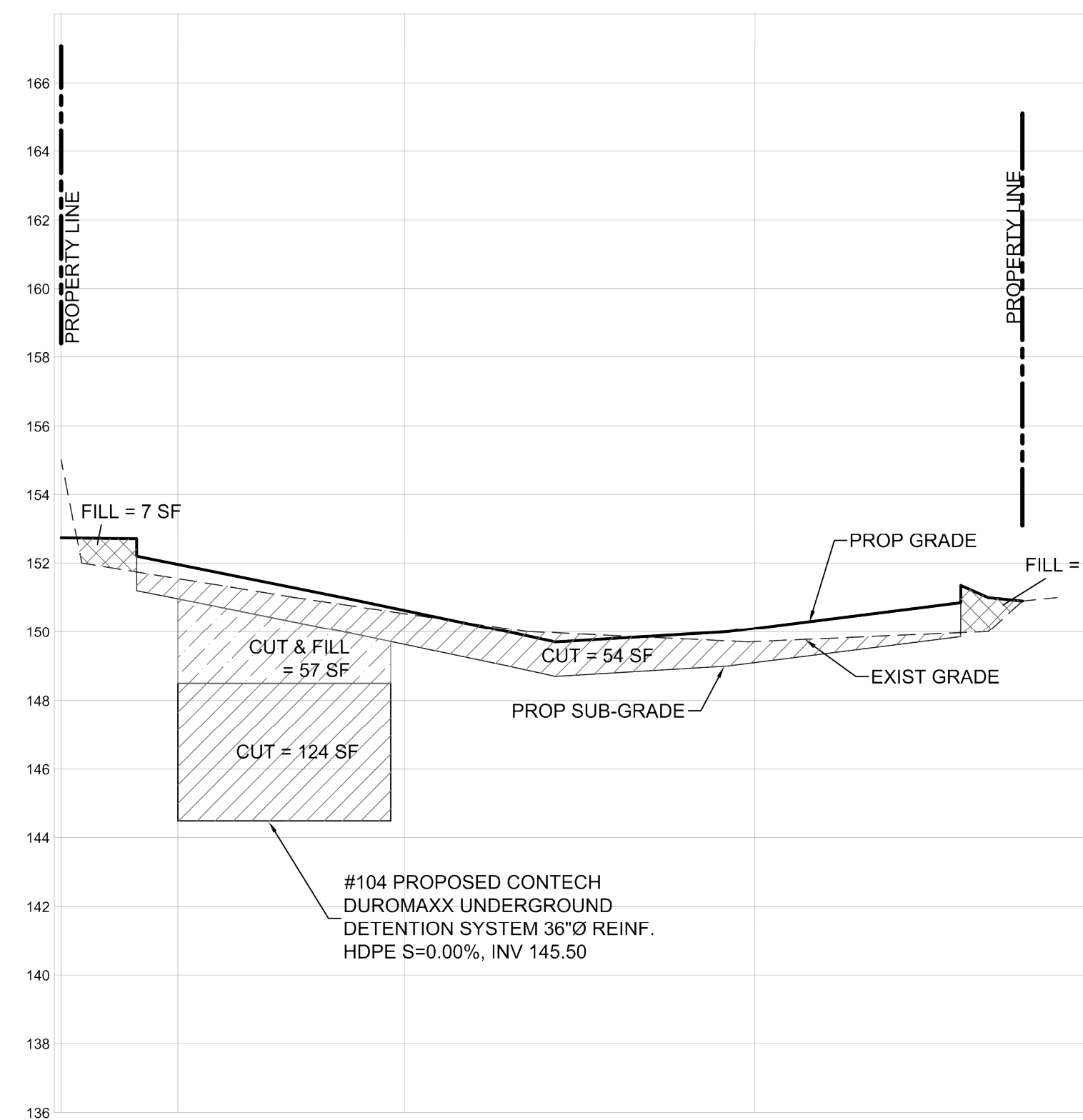


STA 8+50 PROFILE  
SCALE: H:1"=20', V: 1" = 4'

FIGURE ADAPTED FROM PLAN BY SESI CONSULTING ENGINEERS, PC.



STA 9+40 PROFILE  
SCALE: H:1"=20', V: 1" = 4'



STA 9+00 PROFILE  
SCALE: H:1"=20', V: 1" = 4'

CUT VOLUME CALCULATIONS				
STATION	9/2/2015 AREA(SF)	TUCKAHOE AVG. AREA	VOLUME(CF)	JOB NO. 8627 CUM. VOLUME
0+00	0	0	0	0
0+05	0	70	3150	3150
0+50	140	155	7750	10900
1+00	170	91	4550	15450
1+50	12	16	800	16250
2+00	20	104	5200	21450
2+50	188	224	11200	32650
3+00	260	255.5	12775	45425
3+50	251	209	10450	55875
4+00	167	146	7300	63175
4+50	125	127.5	6375	69550
5+00	130	92	4600	74150
5+50	54	35	1750	75900
6+00	16	14	700	76600
6+50	12	10.5	525	77125
7+00	9	242.5	12125	89250
7+50	476	383.5	19175	108425
8+00	291	364.5	18225	126650
8+50	438	336.5	16825	143475
9+00	235	117.5	4700	148175
9+40	0			
TOTAL VOLUME (CF) =			148175	
TOTAL CUT VOLUME (CY) =			5488	

FILL VOLUME CALCULATIONS				
STATION	9/2/2015 AREA(SF)	TUCKAHOE AVG. AREA	VOLUME(CF)	JOB NO. 8627 CUM. VOLUME
0+00	0	291.5	1457.5	1457.5
0+05	583	679.5	30577.5	32035
0+50	776	780.5	39025	71060
1+00	785	635	31750	102810
1+50	485	352	17600	120410
2+00	219	178	8900	129310
2+50	137	129.5	6475	135785
3+00	122	70	3500	139285
3+50	18	9	450	139735
4+00	0	0	0	139735
4+50	0	0.5	25	139760
5+00	1	3.5	175	139935
5+50	6	9	450	140385
6+00	12	110	5500	145885
6+50	208	228	11400	157285
7+00	248	139.5	6975	164260
7+50	31	44	2200	166460
8+00	57	79	3950	170410
8+50	101	86	4300	174710
9+00	71	35.5	1420	176130
9+40	0			
TOTAL VOLUME (CF) =			176130	
TOTAL FILL VOLUME (CY) =			6523	

NOTE:  
ALL CUT AND FILL CALCULATIONS ARE TAKEN TO SUBGRADE (1' BELOW FINISHED GRADE) IN BUILDING AND PAVED AREAS. AREAS OUTSIDE BUILDING AND PAVED AREAS ARE TO FINISHED GRADE FROM EXISTING GRADE.

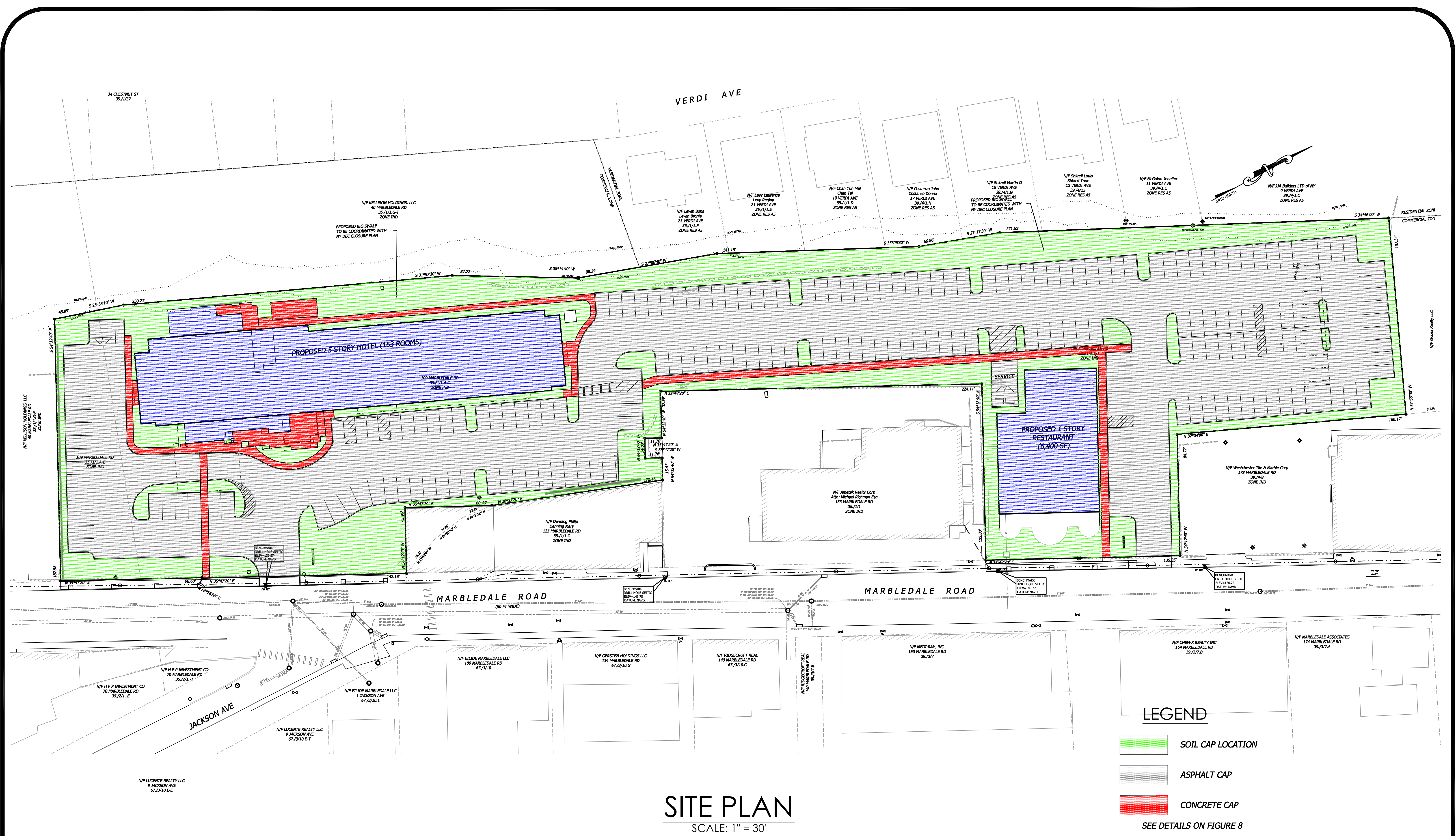
109-125 MARBLEDAL ROAD  
TUCKAHOE, NEW YORK

CROSS SECTION DETAILS  
OF PROPOSED CUT AND  
FILL AREA

FIGURE 6B







109-125 MARBLEDAL ROAD  
TUCKAHOE, NEW YORK

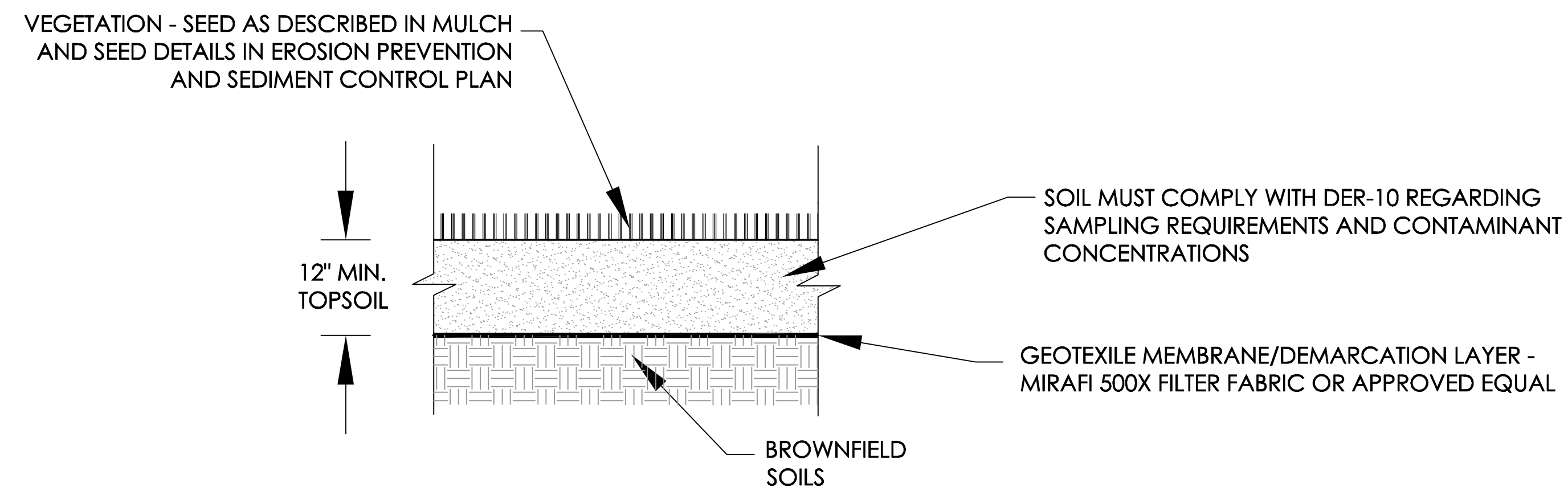
CAP AREA  
PLAN

FIGURE 7

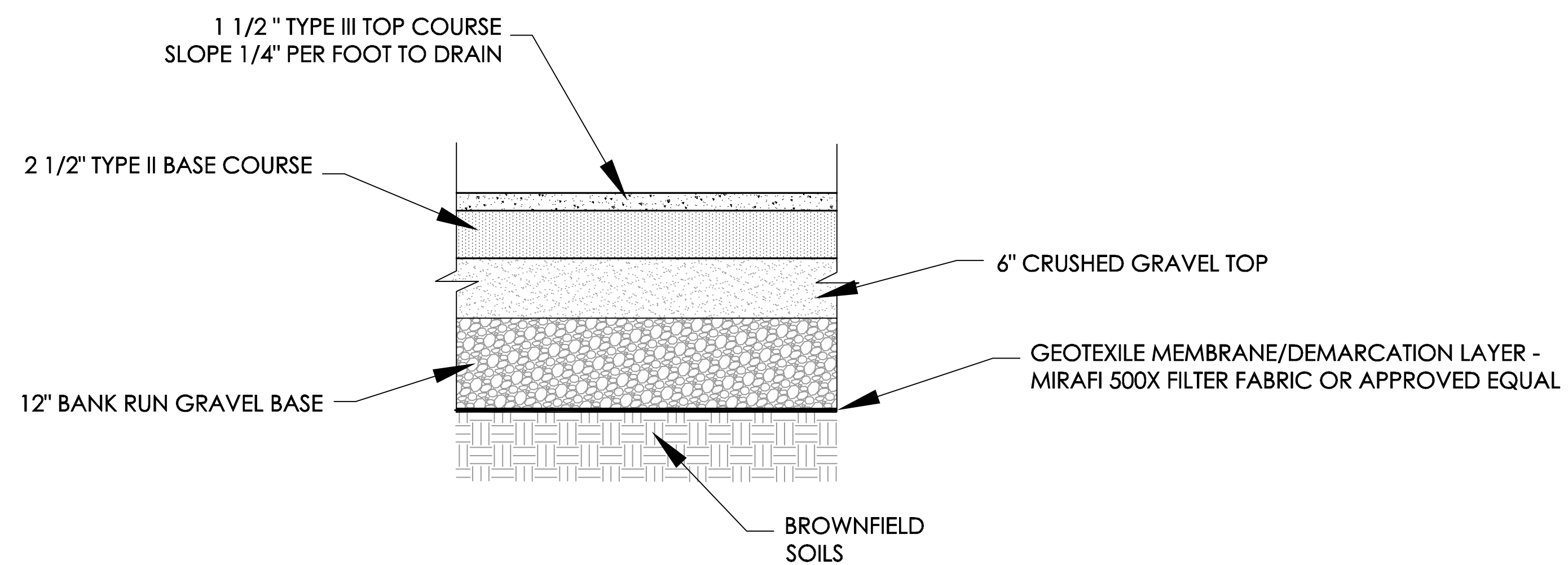


**HydroEnvironmental  
SOLUTIONS, INC.**  
One Deans Bridge Road  
Somers, New York 10589



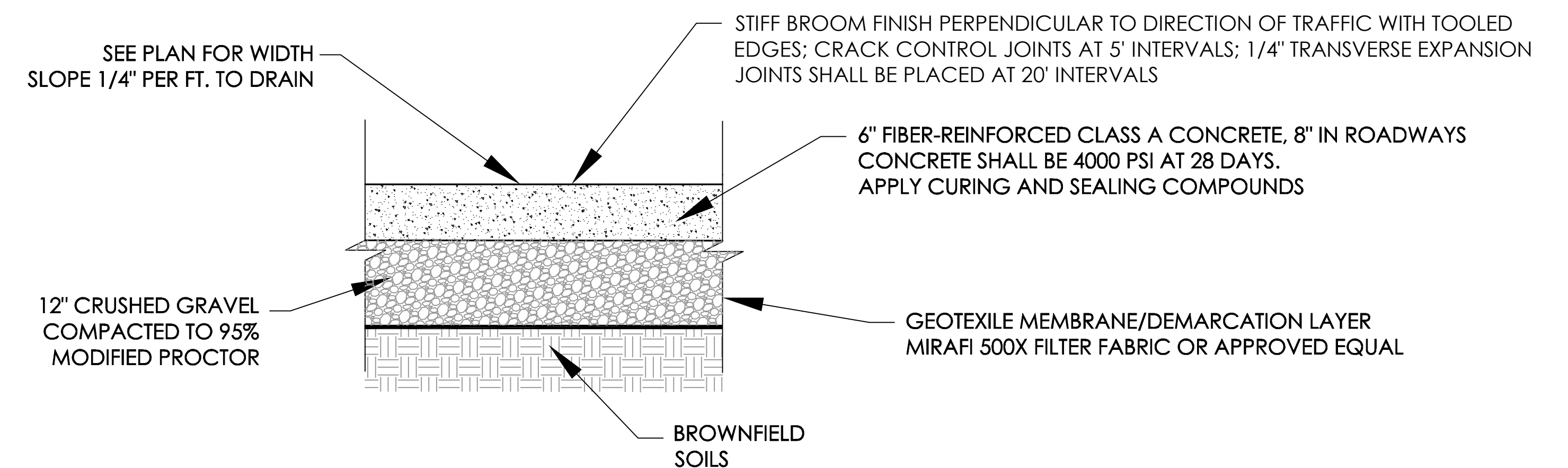


**SOIL CAP**  
N.T.S.



NOTE: COMPACT TOP AND BASE COURSES OF GRAVEL TO 95% MODIFIED PROCTOR

**ASPHALT CAP**  
N.T.S.



**CONCRETE SIDEWALK AND PATIO CAP**  
N.T.S.

109-125 MARBLEDAL ROAD  
TUCKAHOE, NEW YORK

CAP CROSS SECTIONS  
AND DETAILS

FIGURE 8



**HydroEnvironmental**  
SOLUTIONS, INC.  
One Deans Bridge Road  
Somers, New York 10589



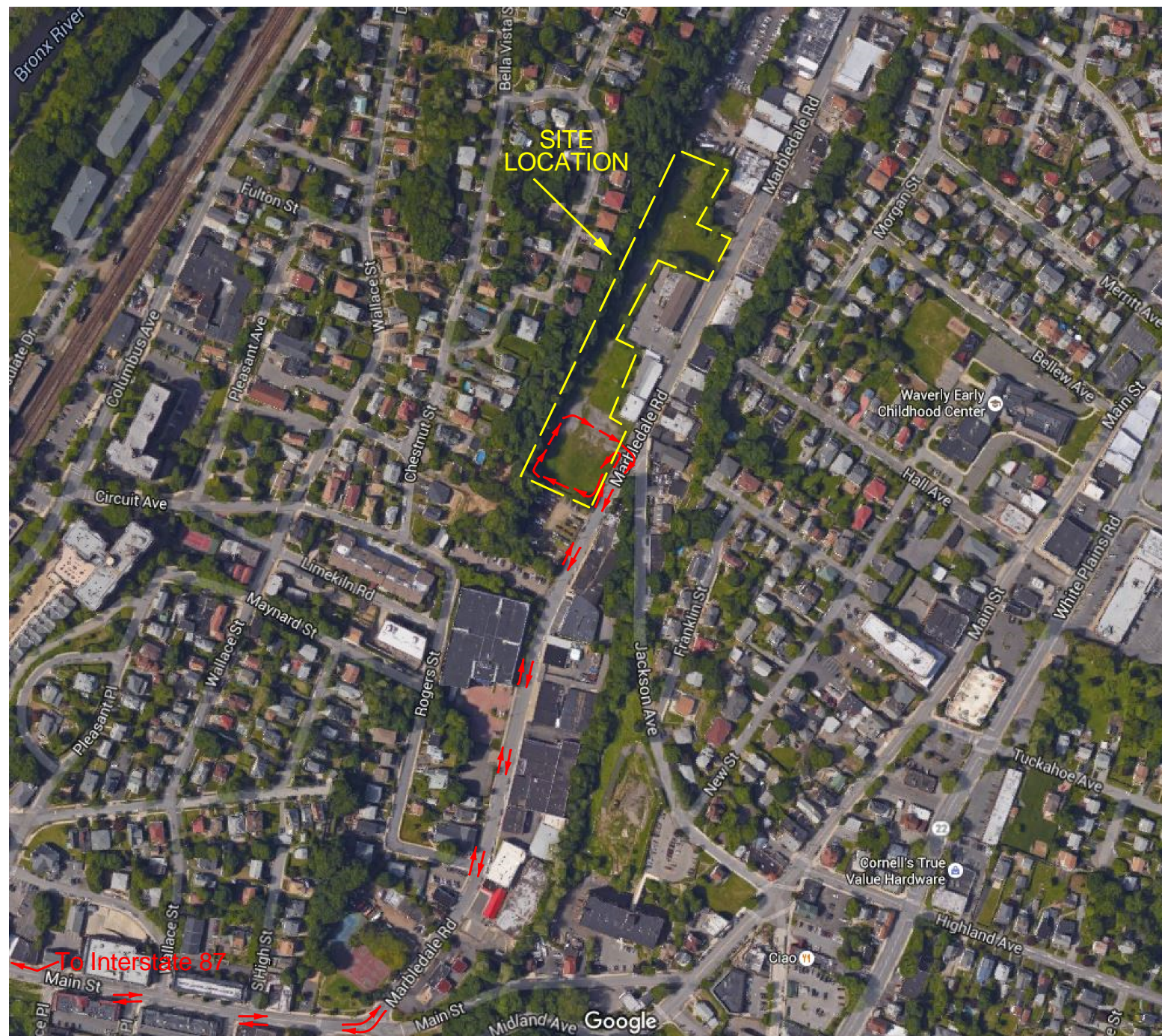


FIGURE 9

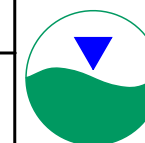
109-125 MARBLEDAL ROAD  
TUCKAHOE, NEW YORK

PLANNED  
TRUCK ROUTE

NOT TO SCALE

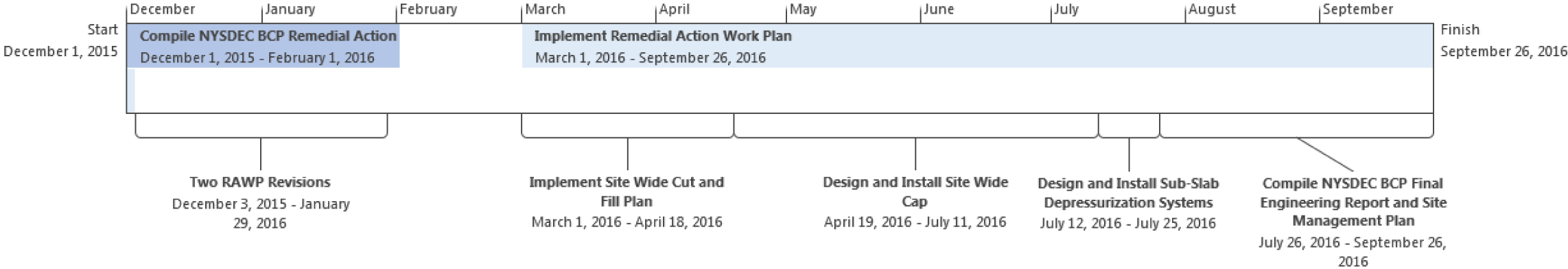
JANUARY 2016

REMEDIAL ACTION  
WORK PLAN



*HydroEnvironmental*  
SOLUTIONS, INC.  
One Deans Bridge Road  
Somers, New York 10589





Task Name	Duration	Start	Finish
▲ <b>Compile NYSDEC BCP Remedial Action Work Plan</b>	45 days?	Tue 12/1/15	Mon 2/1/16
Meeting with NYSDEC in Albany	2 days?	Tue 12/1/15	Wed 12/2/15
Two RAWP Revisions	42 days	Thu 12/3/15	Fri 1/29/16
▲ <b>Implement Remedial Action Work Plan</b>	150 days?	Tue 3/1/16	Mon 9/26/16
Implement Site Wide Cut and Fill Plan	35 days?	Tue 3/1/16	Mon 4/18/16
Design and Install Site Wide Cap	60 days?	Tue 4/19/16	Mon 7/11/16
Design and Install Sub-Slab Depressurization Systems	10 days?	Tue 7/12/16	Mon 7/25/16
Compile NYSDEC BCP Final Engineering Report and Site Management Plan	45 days?	Tue 7/26/16	Mon 9/26/16

FIGURE 10

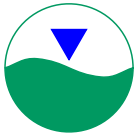
109-125 MARBLEDALE ROAD  
TUCKAHOE, NEW YORK

TENTATIVE  
SCHEDULE

NOT TO SCALE

JANUARY 2016

REMEDIAL ACTION  
WORK PLAN



HydroEnvironmental  
SOLUTIONS, INC.  
One Deans Bridge Road  
Somers, New York 10589