



Memo

Date: November 04, 2016

Project: BCP Site # C360143

To: Village of Tuckahoe

From: John Guzewich, HDR

Subject: Summary of CAMP Results During Site Investigation Activities
109-125 Marbledale Road
Tuckahoe, New York
November 03, 2016

This memorandum was prepared by HDR to provide a review of the Community Air Monitoring Plan (CAMP) implementation during Thursday November 03, 2016 site work. Site work on this day included probe installation of the vacuum monitoring points associated with the soil vapor extraction (SVE) system pilot test. Work was conducted with a direct-push technology (DPT) rig.

It should be noted that NYSDEC's subcontractor has begun "off-site" work along the east side of Marbledale Road across from the quarry area. The subcontractor is conducting CAMP monitoring (VOCs and Dust) for these activities. NYSDEC's subcontractor did not perform any "off-site" activities on this day. The CAMP data collected by NYSDEC's subcontractor is not included in these summaries.

DATA EVALUATION AND INTERPRETATIONS

In accordance with the RAWP, a CAMP is required during site activities involving soil disturbance activities. HES is conducting CAMP monitoring during the current RAWP pre-characterization sampling, well installation, and other activities. In accordance with the RAWP four monitoring stations (upwind, two downwind, and a location between the work area and the nearest occupied building) are set up on-site to collect particulate (Dust) and volatile organic compound (VOC) measurements. In addition, HES has a 5th CAMP monitoring station off-site between the site and the Waverly Early Childhood Center. The CAMP station was situated on Morgan Street, near the intersection of Bellew Ave. for this monitoring event.

Details of the CAMP monitoring procedures and the monitoring equipment used to conduct the CAMP are included in previous data summary memoranda.

Water and vapor/odor suppressant foam are available on-site in the event there is a release of dust or VOCs from site activities. On Thursday November 03, 2016, neither water nor foam were required. There were no visible dusts or noticeable odors released from the work activities for this event. "At hole" air monitoring also occurred with separate instruments.

NYSDEC staff was on-site on Thursday, November 03, 2016 to observe drilling and CAMP monitoring activities. During this monitoring event there were no exceedances of the CAMP alert triggers at any of the five CAMP stations during site activities. None of the dust or VOC concentrations approached the action levels requiring a work stoppage or corrective measures.

Below is a summary table for the 11/03/2016 CAMP monitoring event.

Date: 11/03/16

Camp Data	Upwind (Sta. 3)	Downwind (Sta. 1)	Downwind (Sta. 4)	Buildings (Sta. 2)	Morgan Str. (Sta. 5)
VOCs (ppm)					
Min. 15-min. Ave.	0.00	0.00	0.00	0.00	0.00
Max. 15-min. Ave.	0.00	0.55	0.43	0.11	0.00
Overall Ave.	0.00	0.04	0.35	0.05	0.00
Dust (mg/m³) *					
Min. 15-min. Ave.	0.0199	0.0151	0.0129	0.0185	0.0161
Max. 15-min. Ave.	0.1068	0.1075	0.1166	0.1101	0.1455
Overall Ave.	0.0556	0.0509	0.0583	0.0535	0.0531

NC – Not Collected

* As you can see from the graphs below, the Dust readings at all of the stations started out fairly high and then decreased over time. This time of year when we have cool nights and the ground is still relatively warm there is often a lot of ground fog and/or moisture in the air until this moisture dissipates as the temperatures rise. Often these high moisture ambient conditions cause the Dust meters to over read as it reads the moisture droplets a particulates.

Environet CAMP Data Summary Graphs



11/03/16 – Station #3 (Upwind)



11/03/16 – Station #1 (Downwind)



11/03/16 – Station #4 (Downwind)



11/03/16 – Station #2 (Near Buildings)



11/03/16 – Station #5 (Morgan Street)



Memo

Date: November 07, 2016

Project: BCP Site # C360143

To: Village of Tuckahoe

From: John Guzewich, HDR

Subject: Summary of CAMP Results During Site Investigation Activities
109-125 Marbledale Road
Tuckahoe, New York
November 04, 2016

This memorandum was prepared by HDR to provide a review of the Community Air Monitoring Plan (CAMP) implementation during Friday November 04, 2016 site work. Site work on this day included probe installation of the vacuum monitoring points associated with the soil vapor extraction (SVE) system pilot test. Work was conducted with a direct-push technology (DPT) rig.

It should be noted that NYSDEC's subcontractor has begun "off-site" work along the east side of Marbledale Road across from the quarry area. The subcontractor is conducting CAMP monitoring (VOCs and Dust) for these activities. NYSDEC's subcontractor did not perform any "off-site" activities on this day. The CAMP data collected by NYSDEC's subcontractor is not included in these summaries.

DATA EVALUATION AND INTERPRETATIONS

In accordance with the RAWP, a CAMP is required during site activities involving soil disturbance activities. HES is conducting CAMP monitoring during the current RAWP pre-characterization sampling, well installation, and other activities. In accordance with the RAWP, four monitoring stations (upwind, two downwind, and a location between the work area and the nearest occupied building) are set up on-site to collect particulate (Dust) and volatile organic compound (VOC) measurements. In addition, HES has a 5th CAMP monitoring station off-site between the site and the Waverly Early Childhood Center. The CAMP station was situated on Morgan Street, near the intersection of Bellew Ave. for this monitoring event.

Details of the CAMP monitoring procedures and the monitoring equipment used to conduct the CAMP are included in previous data summary memoranda.

Water and vapor/odor suppressant foam are available on-site in the event there is a release of dust or VOCs from site activities. On Friday November 04, 2016, neither water nor foam were required. There were no visible dusts or noticeable odors released from the work activities for this event. "At hole" air monitoring also occurred with separate instruments.

HDR staff was on-site on Friday, November 04, 2016 to observe drilling and CAMP monitoring activities. During this monitoring event there were no exceedances of the CAMP alert triggers at any of the five CAMP stations during site activities. None of the dust or VOC concentrations approached the action levels requiring a work stoppage or corrective measures.

Below is a summary table for the 11/04/2016 CAMP monitoring event.

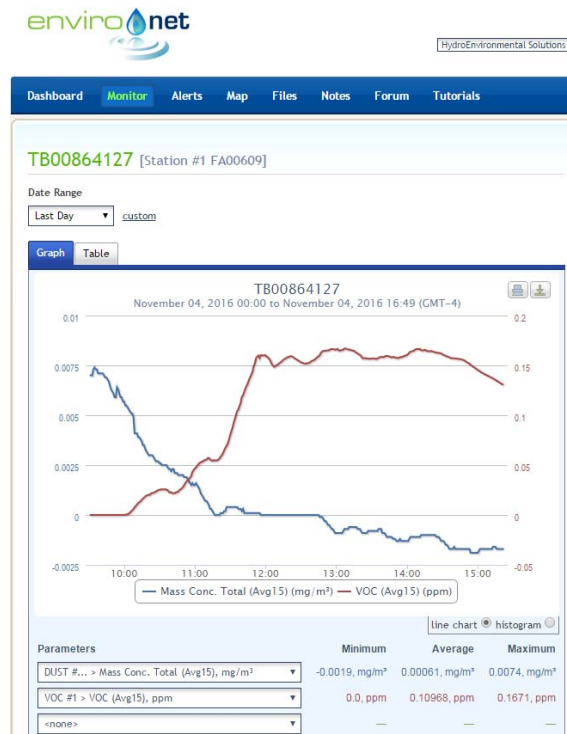
Date: 11/04/16

Camp Data	Upwind (Sta. 3)	Downwind (Sta. 1)	Downwind (Sta. 4)	Buildings (Sta. 2)	Morgan Str. (Sta. 5)
VOCs (ppm)					
Min. 15-min. Ave.	0.00	0.00	0.18	0.00	0.00
Max. 15-min. Ave.	0.06	0.17	0.40	0.21	0.00
Overall Ave.	0.02	0.11	0.33	0.14	0.00
Dust (mg/m³)					
Min. 15-min. Ave.	0.0021	0.0000	0.0000	0.0002	0.0012
Max. 15-min. Ave.	0.0096	0.0074	0.0151	0.0075	0.0070
Overall Ave.	0.0047	0.0006	0.0001	0.0028	0.0032

Environet CAMP Data Summary Graphs



11/04/16 – Station #3 (Upwind)



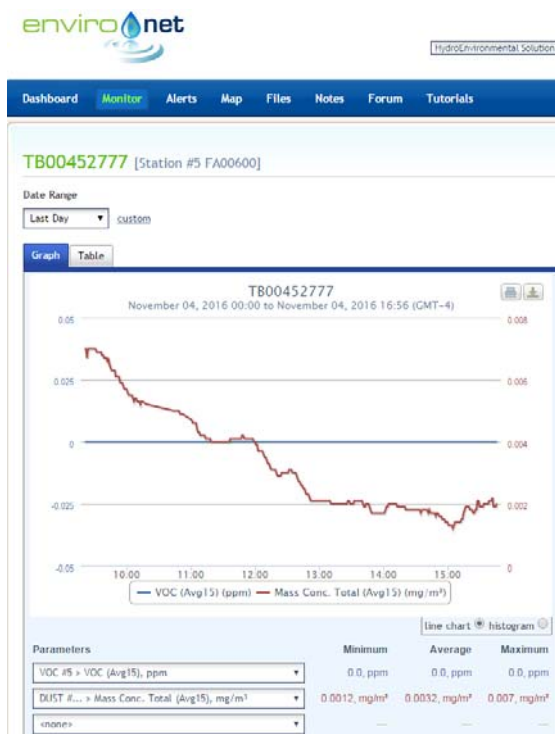
11/04/16 – Station #1 (Downwind)



11/04/16 – Station #4 (Downwind)



11/04/16 – Station #2 (Near Buildings)



11/04/16 – Station #5 (Morgan Street)



Memo

Date: November 08, 2016

Project: BCP Site # C360143

To: Village of Tuckahoe

From: John Guzewich, HDR

Subject: Summary of CAMP Results During Site Investigation Activities
109-125 Marbledale Road
Tuckahoe, New York
November 07, 2016

This memorandum was prepared by HDR to provide a review of the Community Air Monitoring Plan (CAMP) implementation during Monday November 07, 2016 site work. Site work on this day included the shallow soil borings using a direct-push technology (DPT) rig.

It should be noted that NYSDEC's subcontractor has begun "off-site" work along the east side of Marbledale Road across from the quarry area. The subcontractor is conducting CAMP monitoring (VOCs and Dust) for this work when they are conducting intrusive activities. NYSDEC's subcontractor did not perform any "off-site" activities on this day. The CAMP data collected by NYSDEC's subcontractor is not included in these summaries.

DATA EVALUATION AND INTERPRETATIONS

In accordance with the RAWP, a CAMP is required during site activities involving soil disturbance activities. HES is conducting CAMP monitoring during the current RAWP pre-characterization sampling, well installation, and other activities. In accordance with the RAWP, four monitoring stations (upwind, two downwind, and a location between the work area and the nearest occupied building) are set up on-site to collect particulate (Dust) and volatile organic compound (VOC) measurements. In addition, HES has a 5th CAMP monitoring station off-site between the site and the Waverly Early Childhood Center. The CAMP station was situated on Morgan Street, near the intersection of Bellew Ave. for this monitoring event.

Details of the CAMP monitoring procedures and the monitoring equipment used to conduct the CAMP are included in previous data summary memoranda.

Water and vapor/odor suppressant foam are available on-site in the event there is a release of dust or VOCs from site activities. On Monday November 07, 2016, neither water nor foam were required. There were no visible dusts or noticeable odors released from the work activities for this event. "At hole" air monitoring also occurred with separate instruments.

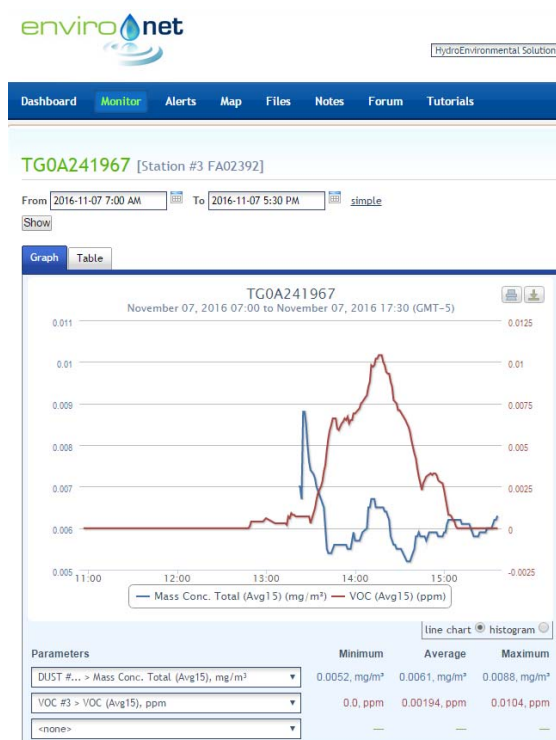
HDR staff was on-site on Monday, November 07, 2016 to observe drilling and CAMP monitoring activities. During this monitoring event there were no exceedances of the CAMP alert triggers at any of the five CAMP stations during site activities. None of the dust or VOC concentrations approached the action levels requiring a work stoppage or corrective measures.

Below is a summary table for the 11/07/2016 CAMP monitoring event.

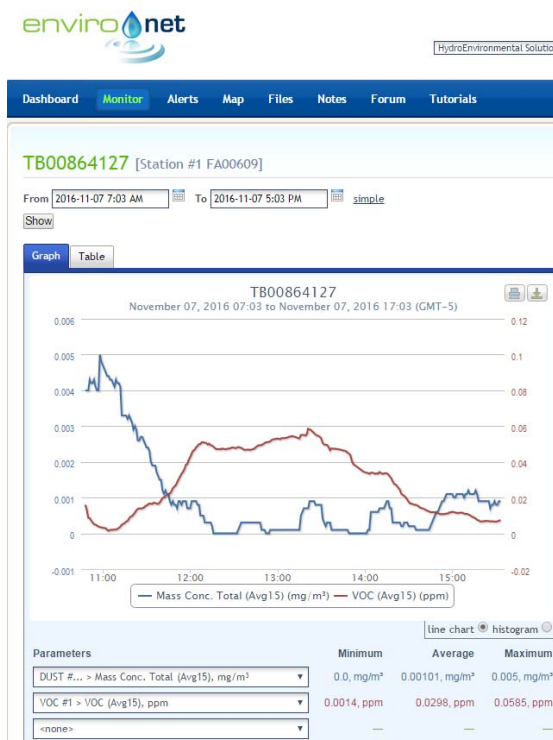
Date: 11/07/16

Camp Data	Upwind (Sta. 3)	Downwind (Sta. 1)	Downwind (Sta. 4)	Buildings (Sta. 2)	Morgan Str. (Sta. 5)
VOCs (ppm)					
Min. 15-min. Ave.	0.00	0.00	0.10	0.00	0.00
Max. 15-min. Ave.	0.01	0.06	0.29	0.28	0.00
Overall Ave.	0.00	0.03	0.24	0.21	0.00
Dust (mg/m³)					
Min. 15-min. Ave.	0.0052	0.0000	0.0000	0.0002	0.0029
Max. 15-min. Ave.	0.0088	0.0050	0.0075	0.0053	0.0100
Overall Ave.	0.0061	0.0010	0.0022	0.0035	0.0043

Environet CAMP Data Summary Graphs



11/07/16 – Station #3 (Upwind)



11/07/16 – Station #1 (Downwind)



11/07/16 – Station #4 (Downwind)



11/07/16 – Station #2 (Near Buildings)



11/07/16 – Station #5 (Morgan Street)



Memo

Date: November 09, 2016

Project: BCP Site # C360143

To: Village of Tuckahoe

From: John Guzewich, HDR

Subject: Summary of CAMP Results During Site Investigation Activities
109-125 Marbledale Road
Tuckahoe, New York
November 08, 2016

This memorandum was prepared by HDR to provide a review of the Community Air Monitoring Plan (CAMP) implementation during Tuesday November 08, 2016 site work. Site work on this day included shallow soil borings using a direct-push technology (DPT) rig and collection of soil samples for laboratory analysis.

It should be noted that NYSDEC's subcontractor is continuing with their "off-site" work along the east side of Marbledale Road across from the quarry area. The subcontractor is conducting CAMP monitoring (VOCs and Dust) for this work when they are conducting intrusive activities. NYSDEC's subcontractor collected soil vapor and ambient air vapor samples as part of their "off-site" activities on this day. CAMP data collected by NYSDEC's subcontractor is not included in these summaries.

DATA EVALUATION AND INTERPRETATIONS

In accordance with the RAWP, a CAMP is required during site activities involving soil disturbance activities. HES is conducting CAMP monitoring during the current RAWP pre-characterization sampling, well installation, and other activities. In accordance with the RAWP, four monitoring stations (upwind, two downwind, and a location between the work area and the nearest occupied building) are set up on-site to collect particulate (Dust) and volatile organic compound (VOC) measurements. In addition, HES has a 5th CAMP monitoring station off-site between the site and the Waverly Early Childhood Center. The CAMP station was situated on Morgan Street, near the intersection of Bellew Ave. for this monitoring event.

Details of the CAMP monitoring procedures and the monitoring equipment used to conduct the CAMP are included in previous data summary memoranda.

Water and vapor/odor suppressant foam are available on-site in the event there is a release of dust or VOCs from site activities. On Tuesday November 08, 2016, neither water nor foam were required. There were no visible dusts or noticeable odors released from the work activities for this event. "At hole" air monitoring also occurred with separate instruments.

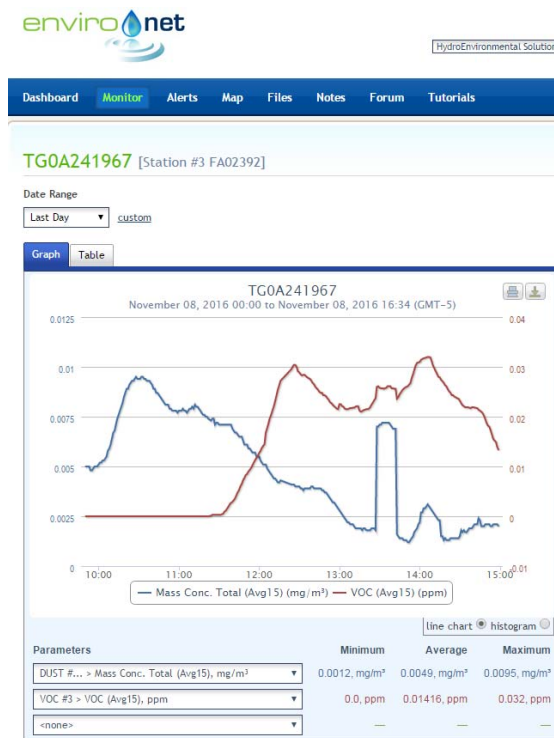
NYSDEC staff was on-site on Tuesday, November 08, 2016 to observe drilling and CAMP monitoring activities. During this monitoring event there were no exceedances of the CAMP alert triggers at any of the five CAMP stations during site activities. None of the dust or VOC concentrations approached the action levels requiring a work stoppage or corrective measures.

Below is a summary table for the 11/08/2016 CAMP monitoring event.

Date: 11/08/16

CAMP Data	Upwind (Sta. 3)	Downwind (Sta. 1)	Downwind (Sta. 4)	Buildings (Sta. 2)	Morgan Str. (Sta. 5)
VOCs (ppm)					
Min. 15-min. Ave.	0.00	0.00	0.07	0.00	0.00
Max. 15-min. Ave.	0.03	0.15	0.33	0.12	0.01
Overall Ave.	0.01	0.06	0.27	0.07	0.00
Dust (mg/m³)					
Min. 15-min. Ave.	0.0012	0.0000	0.0000	0.0197	0.0016
Max. 15-min. Ave.	0.0095	0.0109	0.0060	0.0239	0.0100
Overall Ave.	0.0049	0.0026	0.0008	0.0220	0.0050

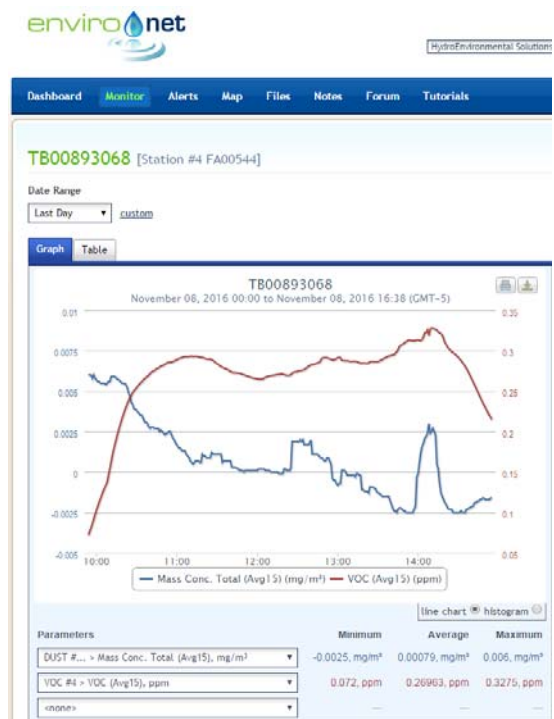
Environet CAMP Data Summary Graphs



11/08/16 – Station #3 (Upwind)



11/08/16 – Station #1 (Downwind)



11/08/16 – Station #4 (Downwind)



11/08/16 – Station #2 (Near Buildings)



11/08/16 – Station #5 (Morgan Street)



Memo

Date: November 10, 2016

Project: BCP Site # C360143

To: Village of Tuckahoe

From: John Guzewich, HDR

Subject: Summary of CAMP Results During Site Investigation Activities
109-125 Marbledale Road
Tuckahoe, New York
November 09, 2016

This memorandum was prepared by HDR to provide a review of the Community Air Monitoring Plan (CAMP) implementation during Wednesday November 09, 2016 site work. Site work on this day included shallow soil borings using a direct-push technology (DPT) rig and collection of soil samples for laboratory analysis.

It should be noted that NYSDEC's subcontractor is continuing with their "off-site" work along the east side of Marbledale Road across from the quarry area. The subcontractor is conducting CAMP monitoring (VOCs and Dust) for this work when they are conducting intrusive activities. NYSDEC's subcontractor collected soil vapor and ambient air vapor samples as part of their "off-site" activities on this day. CAMP data collected by NYSDEC's subcontractor is not included in these summaries.

DATA EVALUATION AND INTERPRETATIONS

In accordance with the RAWP, a CAMP is required during site activities involving soil disturbance activities. HES is conducting CAMP monitoring during the current RAWP pre-characterization sampling, well installation, and other activities. In accordance with the RAWP, four monitoring stations (upwind, two downwind, and a location between the work area and the nearest occupied building) are set up on-site to collect particulate (Dust) and volatile organic compound (VOC) measurements. In addition, HES has a 5th CAMP monitoring station off-site between the site and the Waverly Early Childhood Center. The CAMP station was situated on Morgan Street, near the intersection of Bellew Ave. for this monitoring event.

Details of the CAMP monitoring procedures and the monitoring equipment used to conduct the CAMP are included in previous data summary memoranda.

Water and vapor/odor suppressant foam are available on-site in the event there is a release of dust or VOCs from site activities. On Wednesday November 09, 2016, neither water nor foam were required. There were no visible dusts or noticeable odors released from the work activities for this event. "At hole" air monitoring also occurred with separate instruments.

HDR staff was on-site on Wednesday, November 09, 2016 to observe drilling and CAMP monitoring activities. During this monitoring event there were no exceedances of the CAMP alert triggers at any of the five CAMP stations during site activities.

It should be noted that Dust monitors were not deployed at the on-site CAMP stations during this event due to the rain that was falling. Rain minimizes the potential for dust to be released and also moisture can damage the Dust meters. None of the VOC concentrations approached the action levels requiring a work stoppage or corrective measures.

Below is a summary table for the 11/09/2016 CAMP monitoring event.

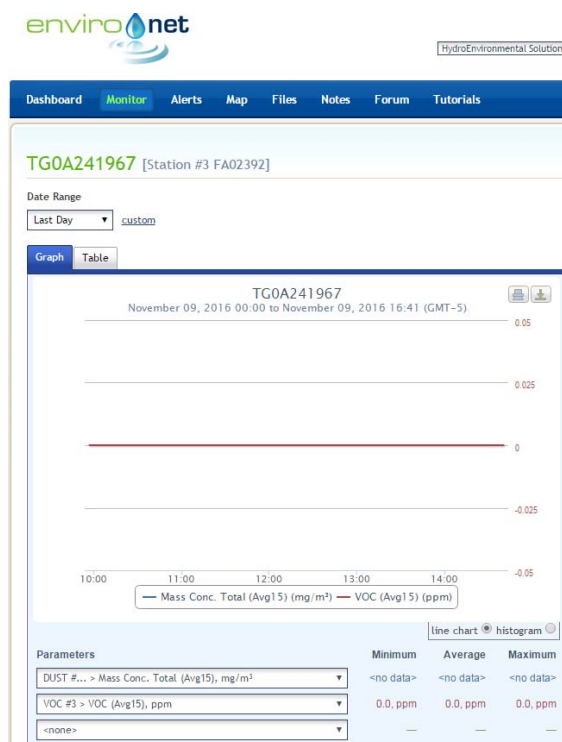
Date: 11/09/16

CAMP Data	Upwind (Sta. 3)	Downwind (Sta. 1)	Downwind (Sta. 4)	Buildings (Sta. 2)	Morgan Str. (Sta. 5)
VOCs (ppm)					
Min. 15-min. Ave.	0.00	0.00	0.00	0.00	0.00
Max. 15-min. Ave.	0.00	0.00	0.48	0.11	0.00
Overall Ave.	0.00	0.00	0.30	0.05	0.00
Dust (mg/m³)					
Min. 15-min. Ave.	NC	NC	NC	NC	0.0320
Max. 15-min. Ave.	NC	NC	NC	NC	0.0490
Overall Ave.	NC	NC	NC	NC	0.0398

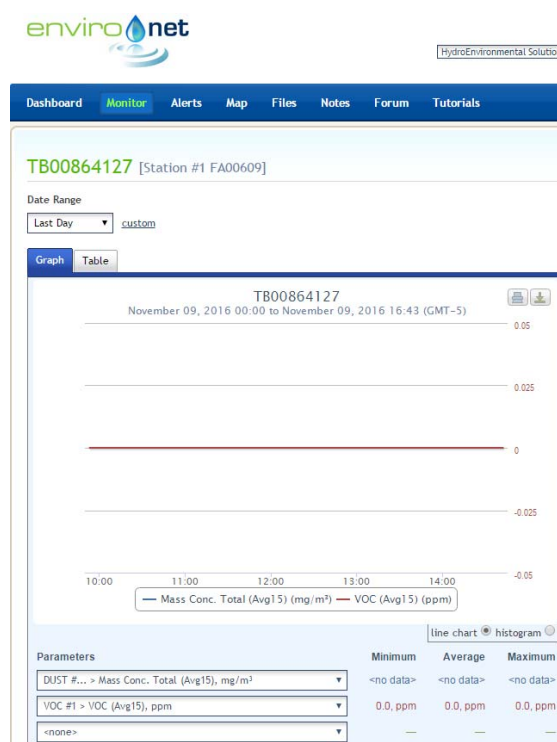
NC – Not Collected

* The on-site CAMP Dust monitors were not deployed due to the rain during the site activities on 11/09/16.

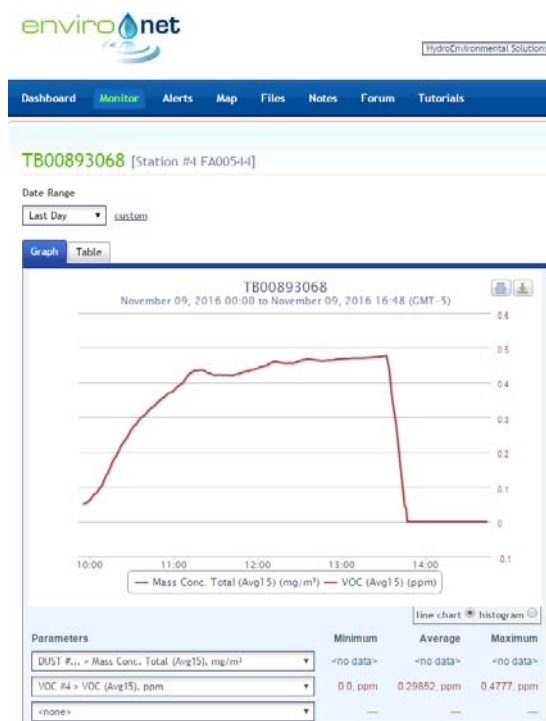
Environet CAMP Data Summary Graphs



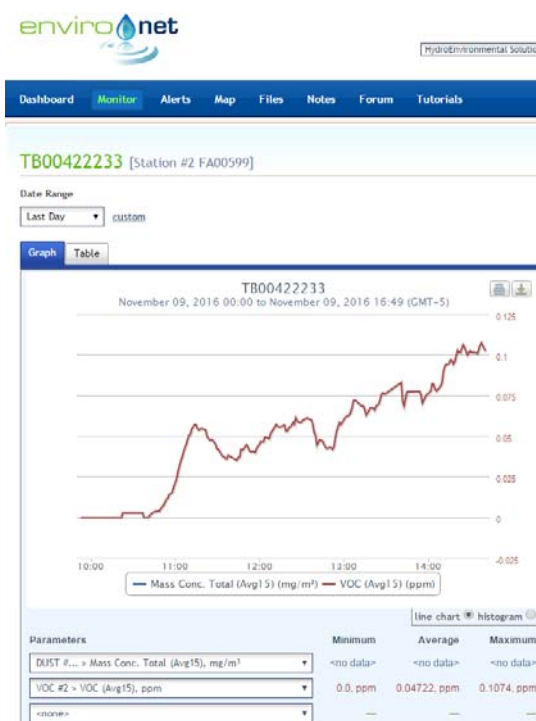
11/09/16 – Station #3 (Upwind)



11/09/16 – Station #1 (Downwind)



11/09/16 – Station #4 (Downwind)



11/09/16 – Station #2 (Near Buildings)

Marbledale Road BCP Site
Summary of CAMP Results (11/09/16)
November 10, 2016

Page 4



11/09/16 – Station #5 (Morgan Street)



Memo

Date: November 11, 2016

Project: BCP Site # C360143

To: Village of Tuckahoe

From: John Guzewich, HDR

Subject: Summary of CAMP Results During Site Investigation Activities
109-125 Marbledale Road
Tuckahoe, New York
November 10, 2016

This memorandum was prepared by HDR to provide a review of the Community Air Monitoring Plan (CAMP) implementation during Thursday November 10, 2016 site work. Site work on this day included shallow soil borings using a direct-push technology (DPT) rig and collection of soil samples for laboratory analysis.

It should be noted that NYSDEC's subcontractor is continuing with their "off-site" work along the east side of Marbledale Road across from the quarry area. The subcontractor is conducting CAMP monitoring (VOCs and Dust) for this work when they are conducting intrusive activities. NYSDEC's subcontractor did not perform any "off-site" activities on this day. CAMP data collected by NYSDEC's subcontractor is not included in these summaries.

DATA EVALUATION AND INTERPRETATIONS

In accordance with the RAWP, a CAMP is required during site activities involving soil disturbance activities. HES is conducting CAMP monitoring during the current RAWP pre-characterization sampling, well installation, and other activities. In accordance with the RAWP, four monitoring stations (upwind, two downwind, and a location between the work area and the nearest occupied building) are set up on-site to collect particulate (Dust) and volatile organic compound (VOC) measurements. In addition, HES has a 5th CAMP monitoring station off-site between the site and the Waverly Early Childhood Center. The CAMP station was situated on Morgan Street, near the intersection of Bellew Ave. for this monitoring event.

Details of the CAMP monitoring procedures and the monitoring equipment used to conduct the CAMP are included in previous data summary memoranda.

Water and vapor/odor suppressant foam are available on-site in the event there is a release of dust or VOCs from site activities. On Thursday November 10, 2016, neither water nor foam were required. There were no visible dusts or noticeable odors released from the work activities for this event. "At hole" air monitoring also occurred with separate instruments.

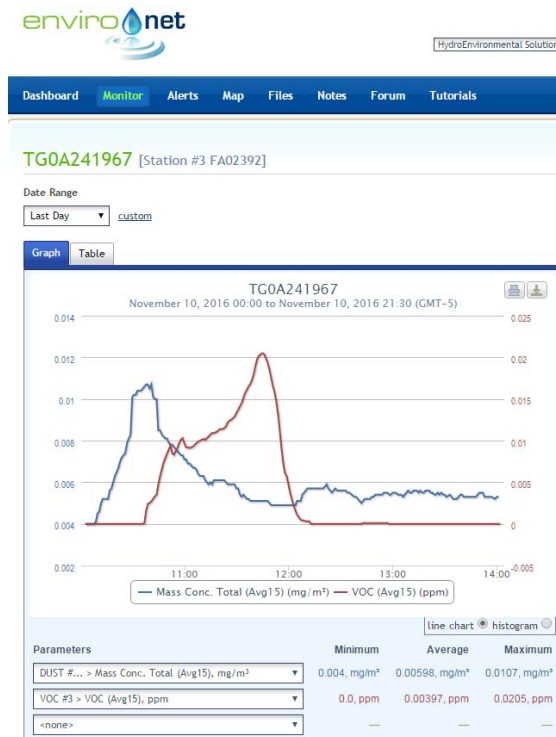
HDR staff was on-site on Thursday, November 10, 2016 to observe drilling and CAMP monitoring activities. During this monitoring event there were no exceedances of the CAMP alert triggers at any of the five CAMP stations during site activities. None of the dust or VOC concentrations approached the action levels requiring a work stoppage or corrective measures.

Below is a summary table for the 11/10/2016 CAMP monitoring event.

Date: 11/10/16

CAMP Data	Upwind (Sta. 3)	Downwind (Sta. 1)	Downwind (Sta. 4)	Buildings (Sta. 2)	Morgan Str. (Sta. 5)
VOCs (ppm)					
Min. 15-min. Ave.	0.00	0.00	0.00	0.00	0.00
Max. 15-min. Ave.	0.02	0.13	0.00	0.04	0.00
Overall Ave.	0.00	0.07	0.00	0.01	0.00
Dust (mg/m³)					
Min. 15-min. Ave.	0.0040	0.0000	0.0000	0.0000	0.0022
Max. 15-min. Ave.	0.0107	0.0174	0.0037	0.0185	0.0041
Overall Ave.	0.0060	0.0029	0.0004	0.0081	0.0031

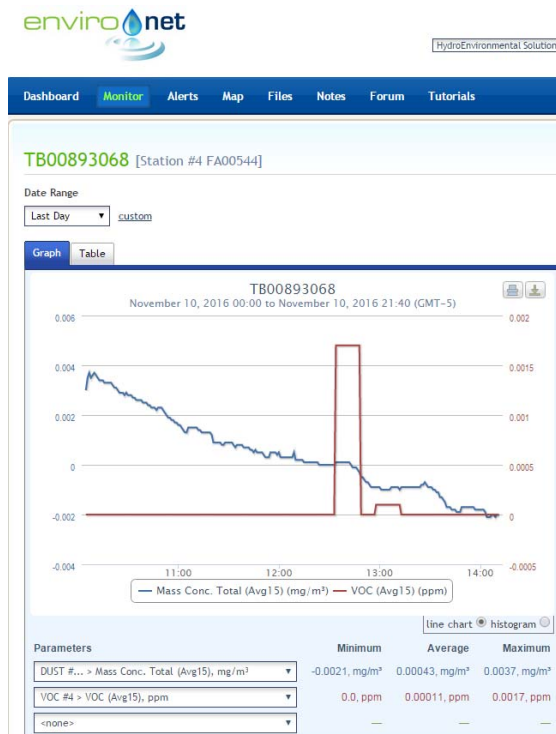
Environet CAMP Data Summary Graphs



11/10/16 – Station #3 (Upwind)



11/10/16 – Station #1 (Downwind)



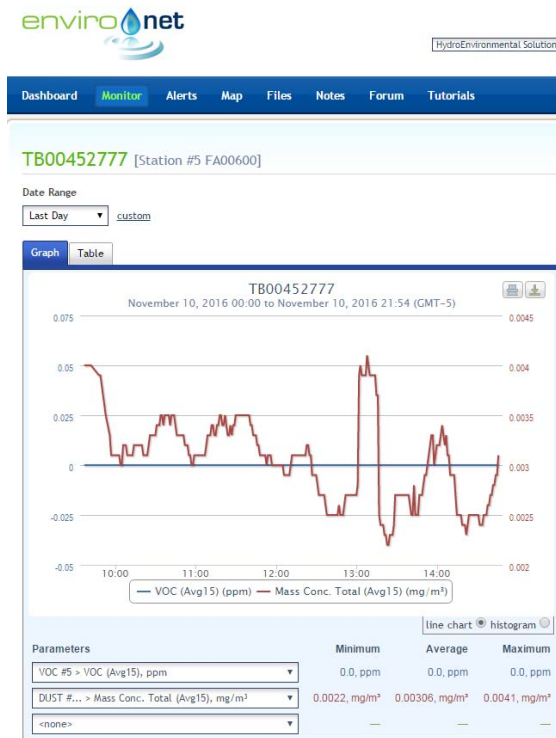
11/10/16 – Station #4 (Downwind)



11/10/16 – Station #2 (Near Buildings)

Marbledale Road BCP Site
Summary of CAMP Results (11/10/16)
November 11, 2016

Page 4



11/10/16 – Station #5 (Morgan Street)



Memo

Date: November 15, 2016

Project: BCP Site # C360143

To: Village of Tuckahoe

From: John Guzewich, HDR

Subject: Summary of CAMP Results During Site Investigation Activities
109-125 Marbledale Road
Tuckahoe, New York
November 14, 2016

This memorandum was prepared by HDR to provide a review of the Community Air Monitoring Plan (CAMP) implementation during Monday November 14, 2016 site work. Site work on this day included shallow soil borings using a direct-push technology (DPT) rig and collection of soil samples for laboratory analysis.

It should be noted that NYSDEC's subcontractor is continuing with their "off-site" work along the east side of Marbledale Road across from the quarry area. The subcontractor is conducting CAMP monitoring (VOCs and Dust) for this work when they are conducting intrusive activities. NYSDEC's subcontractor did not perform any "off-site" activities on this day. CAMP data collected by NYSDEC's subcontractor is not included in these summaries.

DATA EVALUATION AND INTERPRETATIONS

In accordance with the RAWP, a CAMP is required during site activities involving soil disturbance activities. HES is conducting CAMP monitoring during the current RAWP pre-characterization sampling, well installation, and other activities. In accordance with the RAWP, four monitoring stations (upwind, two downwind, and a location between the work area and the nearest occupied building) are set up on-site to collect particulate (Dust) and volatile organic compound (VOC) measurements. In addition, HES has a 5th CAMP monitoring station off-site between the site and the Waverly Early Childhood Center. The CAMP station was situated on Morgan Street, near the intersection of Bellew Ave. for this monitoring event.

Details of the CAMP monitoring procedures and the monitoring equipment used to conduct the CAMP are included in previous data summary memoranda.

Water and vapor/odor suppressant foam are available on-site in the event there is a release of dust or VOCs from site activities. On Monday November 14, 2016, neither water nor foam were required. There were no visible dusts or noticeable odors released from the work activities for this event. "At hole" air monitoring also occurred with separate instruments.

NYSDEC staff was on-site on Monday, November 14, 2016 to observe drilling and CAMP monitoring activities. During this monitoring event there were no exceedances of the CAMP alert triggers at any of the five CAMP stations during site activities. None of the dust or VOC concentrations approached the action levels requiring a work stoppage or corrective measures.

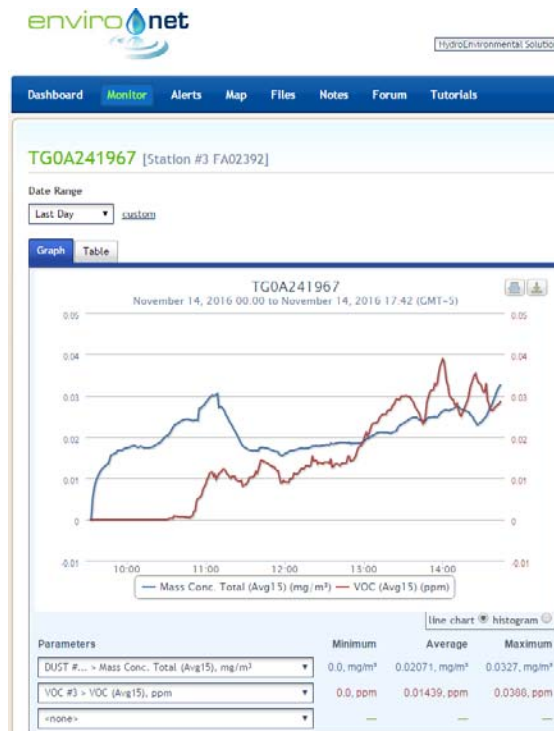
Below is a summary table for the 11/14/2016 CAMP monitoring event.

Date: 11/14/16

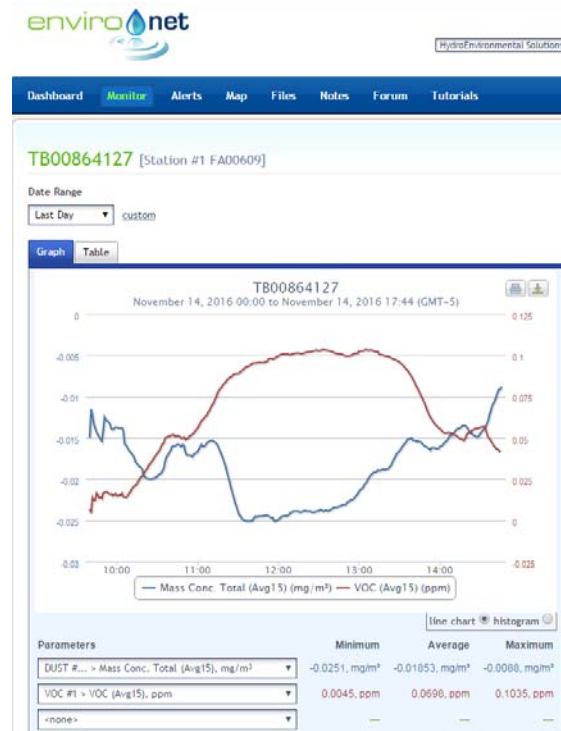
CAMP Data	Upwind (Sta. 3)	Downwind (Sta. 1)	Downwind (Sta. 4)	Buildings (Sta. 2)	Morgan Str. (Sta. 5)
VOCs (ppm)					
Min. 15-min. Ave.	0.00	0.00	0.00	0.00	0.00
Max. 15-min. Ave.	0.04	0.10	0.06	0.11	0.03
Overall Ave.	0.01	0.07	0.01	0.08	0.00
Dust (mg/m³)					
Min. 15-min. Ave.	0.0000	-0.0251	0.0000	0.0127	0.0124
Max. 15-min. Ave.	0.0327	-0.0088	0.0229	0.0395	0.0394
Overall Ave.	0.0207	-0.0185	0.0119	0.0195	0.0238

* Station #1 dust monitor was reading below zero for much of the day.

Environet CAMP Data Summary Graphs



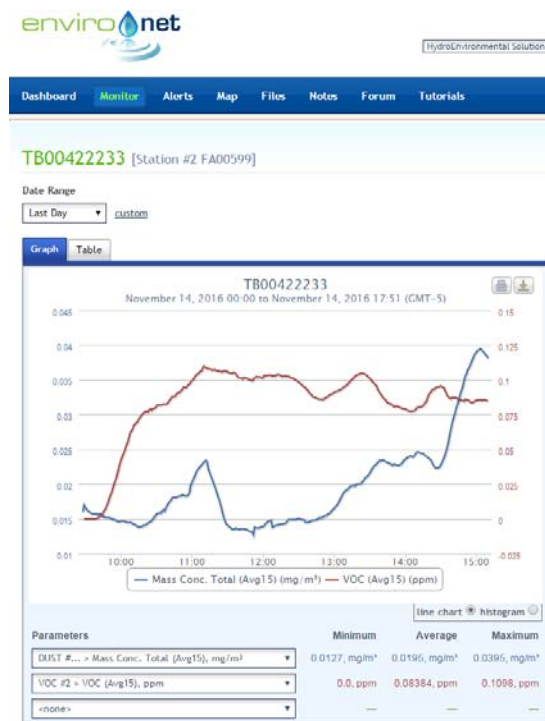
11/14/16 – Station #3 (Upwind)



11/14/16 – Station #1 (Downwind)



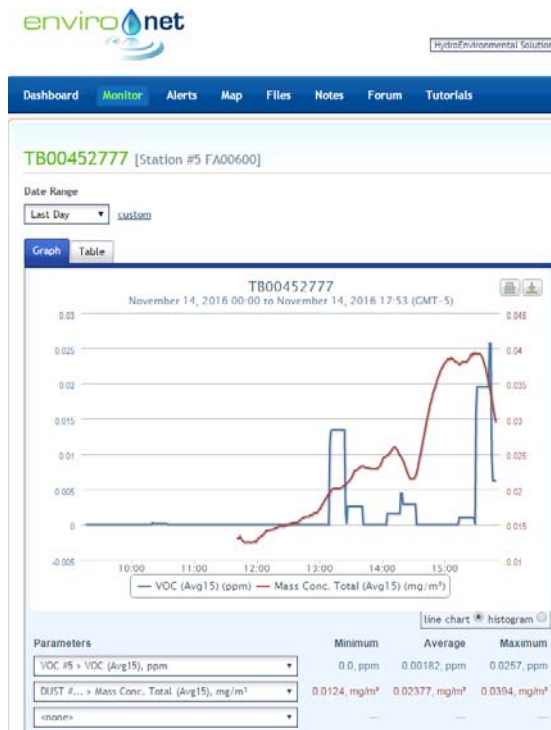
11/14/16 – Station #4 (Downwind)



11/14/16 – Station #2 (Near Buildings)

Marbledale Road BCP Site
Summary of CAMP Results (11/14/16)
November 15, 2016

Page 4



11/14/16 – Station #5 (Morgan Street)



Memo

Date: November 28, 2016

Project: BCP Site # C360143

To: Village of Tuckahoe

From: John Guzewich, HDR

Subject: Summary of CAMP Results During Site Investigation Activities
109-125 Marbledale Road
Tuckahoe, New York
November 22, 2016

This memorandum was prepared by HDR to provide a review of the Community Air Monitoring Plan (CAMP) implementation during Tuesday November 22, 2016 site work. Site work on this day included shallow soil borings using a direct-push technology (DPT) rig and collection of soil samples for laboratory analysis.

It should be noted that NYSDEC's subcontractor is continuing with their "off-site" work along the east side of Marbledale Road across from the quarry area. The subcontractor is conducting CAMP monitoring (VOCs and Dust) for this work when they are conducting intrusive activities. NYSDEC's subcontractor did not perform any "off-site" activities on this day. CAMP data collected by NYSDEC's subcontractor is not included in these summaries.

DATA EVALUATION AND INTERPRETATIONS

In accordance with the RAWP, a CAMP is required during site activities involving soil disturbance activities. HES is conducting CAMP monitoring during the current RAWP pre-characterization sampling, well installation, and other activities. In accordance with the RAWP, four monitoring stations (upwind, two downwind, and a location between the work area and the nearest occupied building) are set up on-site to collect particulate (Dust) and volatile organic compound (VOC) measurements. In addition, HES has a 5th CAMP monitoring station off-site between the site and the Waverly Early Childhood Center. The CAMP station was situated on Morgan Street, near the intersection of Bellew Ave. for this monitoring event.

Details of the CAMP monitoring procedures and the monitoring equipment used to conduct the CAMP are included in previous data summary memoranda.

Water and vapor/odor suppressant foam are available on-site in the event there is a release of dust or VOCs from site activities. On Tuesday November 22, 2016, neither water nor foam were required. There were no visible dusts or noticeable odors released from the work activities for this event. "At hole" air monitoring also occurred with separate instruments.

NYSDEC staff was on-site on Tuesday, November 22, 2016 to observe drilling and CAMP monitoring activities. During this monitoring event there were no exceedances of the CAMP alert triggers at any of the five CAMP stations during site activities. None of the dust or VOC concentrations approached the action levels requiring a work stoppage or corrective measures.

Below is a summary table for the 11/22/2016 CAMP monitoring event.

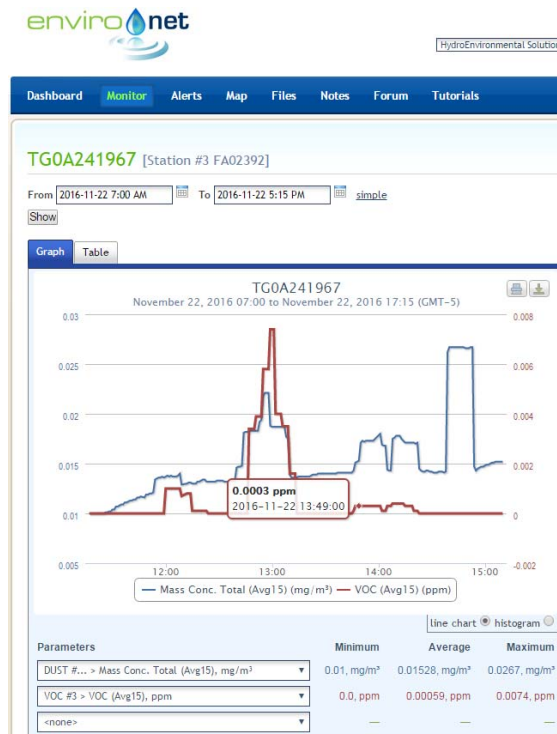
Date: 11/22/16

CAMP Data	Upwind (Sta. 3)	Downwind (Sta. 1)	Downwind (Sta. 4)	Buildings (Sta. 2)	Morgan Str. (Sta. 5)
VOCs (ppm)					
Min. 15-min. Ave.	0.00	0.00	0.00	0.00	NDA
Max. 15-min. Ave.	0.01	0.04	0.00	0.07	NDA
Overall Ave.	0.00	0.03	0.00	0.05	NDA
Dust (mg/m³)					
Min. 15-min. Ave.	0.0100	0.0000	0.0000	0.0013	0.0019
Max. 15-min. Ave.	0.0267	0.0030	0.0048	0.0035	0.0051
Overall Ave.	0.0153	0.0009	0.0005	0.0022	0.0031

* Off-Site VOC monitor was not transmitting data to the Environet website.

NDA – No Data Available.

Environet CAMP Data Summary Graphs



11/22/16 – Station #3 (Upwind)



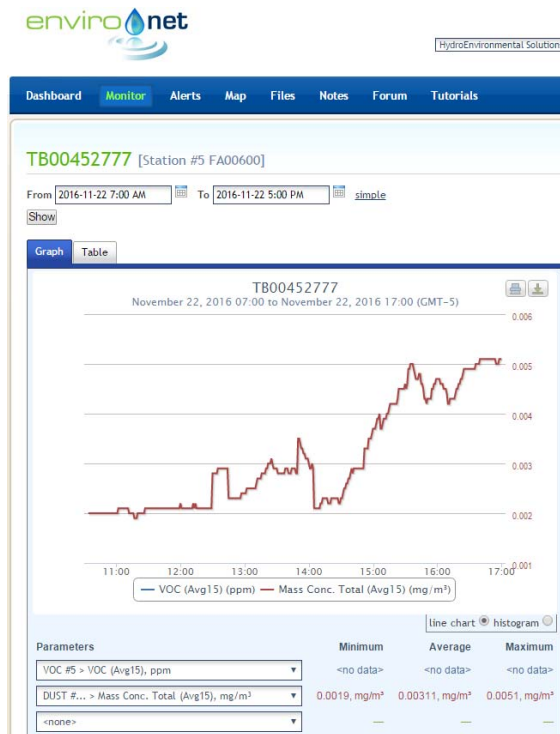
11/22/16 – Station #1 (Downwind)



11/22/16 – Station #4 (Downwind)



11/22/16 – Station #2 (Near Buildings)



11/22/16 – Station #5 (Morgan Street)



Memo

Date: November 28, 2016

Project: BCP Site # C360143

To: Village of Tuckahoe

From: John Guzewich, HDR

Subject: Summary of CAMP Results During Site Investigation Activities
109-125 Marbledale Road
Tuckahoe, New York
November 23, 2016

This memorandum was prepared by HDR to provide a review of the Community Air Monitoring Plan (CAMP) implementation during Wednesday November 23, 2016 site work. Site work on this day included shallow soil borings using a direct-push technology (DPT) rig and collection of soil samples for laboratory analysis.

It should be noted that NYSDEC's subcontractor is continuing with their "off-site" work along the east side of Marbledale Road across from the quarry area. The subcontractor is conducting CAMP monitoring (VOCs and Dust) for this work when they are conducting intrusive activities. NYSDEC's subcontractor did not perform any "off-site" activities on this day. CAMP data collected by NYSDEC's subcontractor is not included in these summaries.

DATA EVALUATION AND INTERPRETATIONS

In accordance with the RAWP, a CAMP is required during site activities involving soil disturbance activities. HES is conducting CAMP monitoring during the current RAWP pre-characterization sampling, well installation, and other activities. In accordance with the RAWP, four monitoring stations (upwind, two downwind, and a location between the work area and the nearest occupied building) are set up on-site to collect particulate (Dust) and volatile organic compound (VOC) measurements. In addition, HES has a 5th CAMP monitoring station off-site between the site and the Waverly Early Childhood Center. The CAMP station was situated on Morgan Street, near the intersection of Bellew Ave. for this monitoring event.

Details of the CAMP monitoring procedures and the monitoring equipment used to conduct the CAMP are included in previous data summary memoranda.

Water and vapor/odor suppressant foam are available on-site in the event there is a release of dust or VOCs from site activities. On Wednesday November 23, 2016, neither water nor foam were required. There were no visible dusts or noticeable odors released from the work activities for this event. "At hole" air monitoring also occurred with separate instruments.

HDR staff was on-site on Wednesday, November 23, 2016 to observe drilling and CAMP monitoring activities. During this monitoring event there were no exceedances of the CAMP alert triggers at any of the five CAMP stations during site activities. None of the dust or VOC concentrations approached the action levels requiring a work stoppage or corrective measures.

Below is a summary table for the 11/23/2016 CAMP monitoring event.

Date: 11/23/16

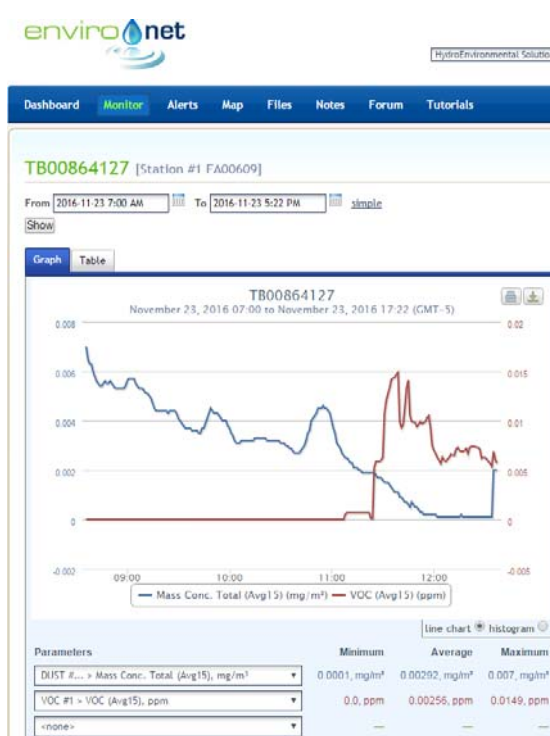
CAMP Data	Upwind (Sta. 3)	Downwind (Sta. 1)	Downwind (Sta. 4)	Buildings (Sta. 2)	Morgan Str. (Sta. 5)
VOCs (ppm)					
Min. 15-min. Ave.	0.00	0.00	0.00	0.00	0.00
Max. 15-min. Ave.	0.01	0.01	0.00	0.05	0.09
Overall Ave.	0.00	0.00	0.00	0.02	0.06
Dust (mg/m³)					
Min. 15-min. Ave.	0.0000	0.0001	-0.0009	0.0021	0.0029
Max. 15-min. Ave.	0.0150	0.0070	0.0093	0.0086	0.0050
Overall Ave.	0.0070	0.0029	0.0015	0.0043	0.0037

* Dust monitor at Station 4 dropped slightly below zero towards the end of the monitoring event.

Environet CAMP Data Summary Graphs



11/23/16 – Station #3 (Upwind)



11/23/16 – Station #1 (Downwind)



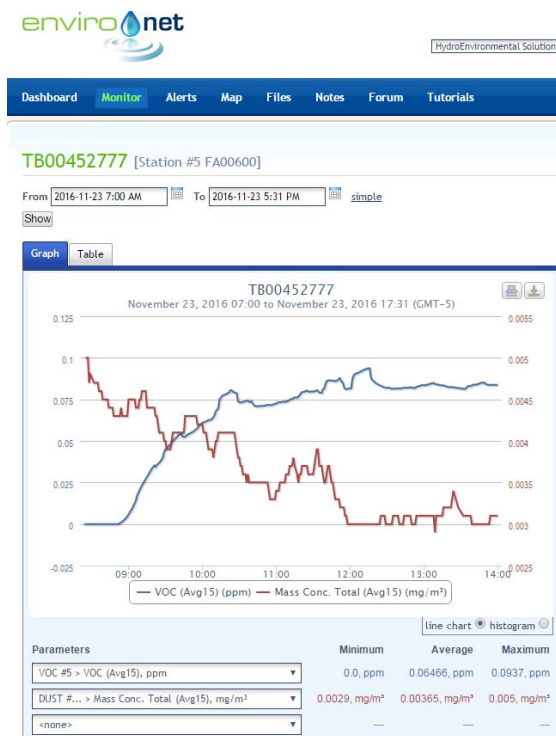
11/23/16 – Station #4 (Downwind)



11/23/16 – Station #2 (Near Buildings)

Marbledale Road BCP Site
Summary of CAMP Results (11/23/16)
November 28, 2016

Page 4



11/23/16 – Station #5 (Morgan Street)



Memo

Date: November 28, 2016

Project: BCP Site # C360143

To: Village of Tuckahoe

From: John Guzewich, HDR

Subject: Summary of CAMP Results During Site Investigation Activities
109-125 Marbledale Road
Tuckahoe, New York
November 28, 2016

This memorandum was prepared by HDR to provide a review of the Community Air Monitoring Plan (CAMP) implementation during Monday November 28, 2016 site work. Site work on this day included shallow soil borings using a direct-push technology (DPT) rig and collection of soil samples for laboratory analysis.

It should be noted that NYSDEC's subcontractor is continuing with their "off-site" work along the east side of Marbledale Road across from the quarry area. The subcontractor is conducting CAMP monitoring (VOCs and Dust) for this work when they are conducting intrusive activities. NYSDEC's subcontractor did not perform any "off-site" activities on this day. CAMP data collected by NYSDEC's subcontractor is not included in these summaries.

DATA EVALUATION AND INTERPRETATIONS

In accordance with the RAWP, a CAMP is required during site activities involving soil disturbance activities. HES is conducting CAMP monitoring during the current RAWP pre-characterization sampling, well installation, and other activities. In accordance with the RAWP, four monitoring stations (upwind, two downwind, and a location between the work area and the nearest occupied building) are set up on-site to collect particulate (Dust) and volatile organic compound (VOC) measurements. In addition, HES has a 5th CAMP monitoring station off-site between the site and the Waverly Early Childhood Center. The CAMP station was situated on Morgan Street, near the intersection of Bellew Ave. for this monitoring event.

Details of the CAMP monitoring procedures and the monitoring equipment used to conduct the CAMP are included in previous data summary memoranda.

Water and vapor/odor suppressant foam are available on-site in the event there is a release of dust or VOCs from site activities. On Monday November 28, 2016, neither water nor foam were required. There were no visible dusts or noticeable odors released from the work activities for this event. "At hole" air monitoring also occurred with separate instruments.

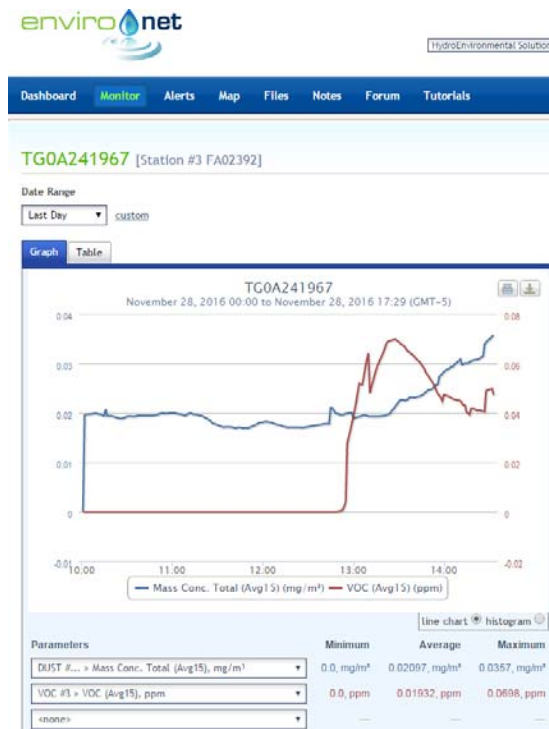
HDR staff was on-site on Monday, November 28, 2016 to observe drilling and CAMP monitoring activities. During this monitoring event there were no exceedances of the CAMP alert triggers at any of the five CAMP stations during site activities. None of the dust or VOC concentrations approached the action levels requiring a work stoppage or corrective measures.

Below is a summary table for the 11/28/2016 CAMP monitoring event.

Date: 11/28/16

CAMP Data	Upwind (Sta. 3)	Downwind (Sta. 1)	Downwind (Sta. 4)	Buildings (Sta. 2)	Morgan Str. (Sta. 5)
VOCs (ppm)					
Min. 15-min. Ave.	0.00	0.00	0.00	0.00	0.00
Max. 15-min. Ave.	0.07	0.06	0.00	0.10	0.21
Overall Ave.	0.02	0.02	0.00	0.06	0.13
Dust (mg/m³)					
Min. 15-min. Ave.	0.0000	0.0114	0.0193	0.0168	0.0181
Max. 15-min. Ave.	0.0357	0.0290	0.0390	0.0470	0.0382
Overall Ave.	0.0210	0.0176	0.0260	0.0219	0.0247

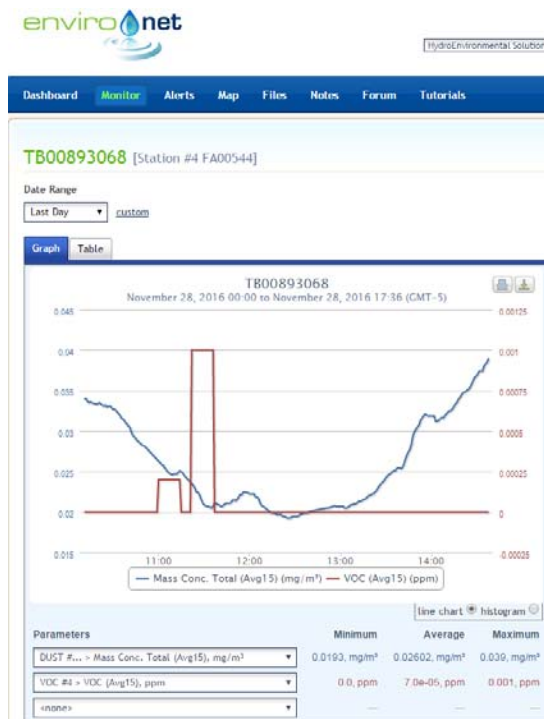
Environet CAMP Data Summary Graphs



11/28/16 – Station #3 (Upwind)



11/28/16 – Station #1 (Downwind)



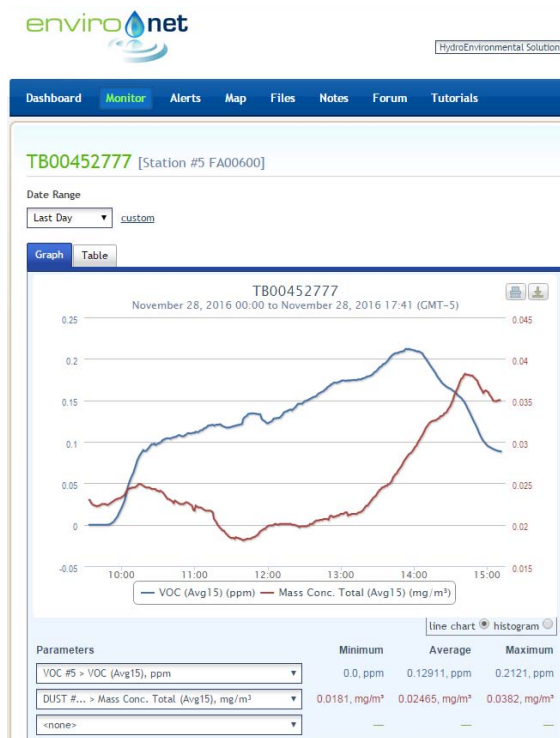
11/28/16 – Station #4 (Downwind)



11/28/16 – Station #2 (Near Buildings)

Marbledale Road BCP Site
Summary of CAMP Results (11/28/16)
November 28, 2016

Page 4



11/23/16 – Station #5 (Morgan Street)



Memo

Date: December 02, 2016

Project: BCP Site # C360143

To: Village of Tuckahoe

From: John Guzewich, HDR

Subject: Summary of CAMP Results During Site Investigation Activities
109-125 Marbledale Road
Tuckahoe, New York
December 01, 2016

This memorandum was prepared by HDR to provide a review of the Community Air Monitoring Plan (CAMP) implementation during Thursday December 01, 2016 site work. Site work on this day included shallow soil borings using a direct-push technology (DPT) rig and collection of soil samples for laboratory analysis.

It should be noted that NYSDEC's subcontractor is continuing with their "off-site" work along the east side of Marbledale Road across from the quarry area. The subcontractor is conducting CAMP monitoring (VOCs and Dust) for this work when they are conducting intrusive activities. NYSDEC's subcontractor did not perform any "off-site" activities on this day. CAMP data collected by NYSDEC's subcontractor is not included in these summaries.

DATA EVALUATION AND INTERPRETATIONS

In accordance with the RAWP, a CAMP is required during site activities involving soil disturbance activities. HES is conducting CAMP monitoring during the current RAWP pre-characterization sampling, well installation, and other activities. In accordance with the RAWP, four monitoring stations (upwind, two downwind, and a location between the work area and the nearest occupied building) are set up on-site to collect particulate (Dust) and volatile organic compound (VOC) measurements. In addition, HES has a 5th CAMP monitoring station off-site between the site and the Waverly Early Childhood Center. The CAMP station was situated on Morgan Street, near the intersection of Bellew Ave. for this monitoring event.

Details of the CAMP monitoring procedures and the monitoring equipment used to conduct the CAMP are included in previous data summary memoranda.

Water and vapor/odor suppressant foam are available on-site in the event there is a release of dust or VOCs from site activities. On Thursday December 01, 2016, neither water nor foam were required. There were no visible dusts or noticeable odors released from the work activities for this event. "At hole" air monitoring also occurred with separate instruments.

HDR staff was on-site on Thursday, December 01, 2016 to observe drilling and CAMP monitoring activities. During this monitoring event there were no exceedances of the CAMP alert triggers at any of the five CAMP stations during site activities. None of the dust or VOC concentrations approached the action levels requiring a work stoppage or corrective measures.

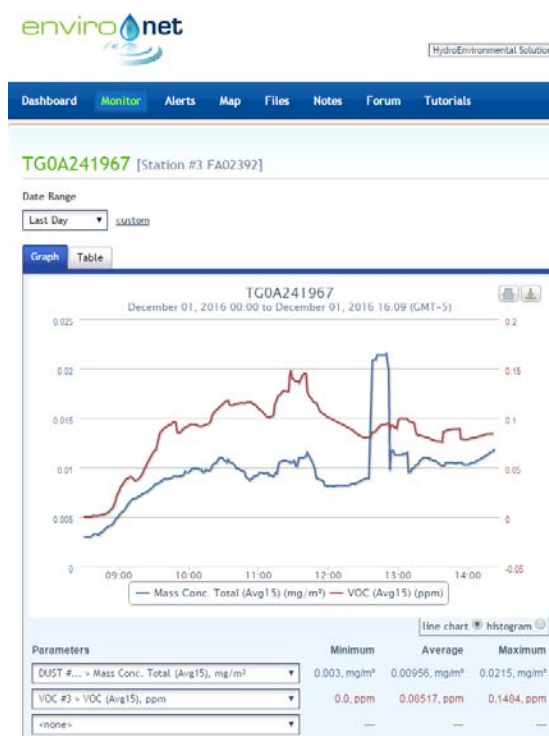
Below is a summary table for the 12/01/2016 CAMP monitoring event.

Date: 12/01/16

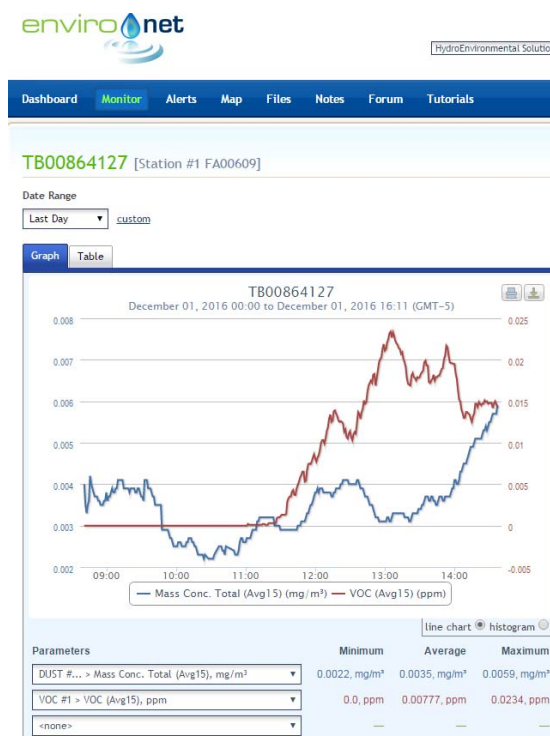
CAMP Data	Upwind (Sta. 3)	Downwind (Sta. 1)	Downwind (Sta. 4)	Buildings (Sta. 2)	Morgan Str. (Sta. 5)
VOCs (ppm)					
Min. 15-min. Ave.	0.00	0.00	0.00	0.00	0.00
Max. 15-min. Ave.	0.15	0.02	0.02	0.12	0.18
Overall Ave.	0.09	0.01	0.00	0.08	0.11
Dust (mg/m³)					
Min. 15-min. Ave.	0.0030	0.0022	0.0005	0.0033	0.0023
Max. 15-min. Ave.	0.0215	0.0059	0.1194	0.0700	0.0113
Overall Ave.	0.0096	0.0035	0.0077	0.0074	0.0070

* It should be noted that the elevated 15-min reading at Station #4 (below the action level criterion) occurred when the meter was initially set-up; drilling activities for the day had not started at this point.

Environet CAMP Data Summary Graphs



12/01/16 – Station #3 (Upwind)



12/01/16 – Station #1 (Downwind)



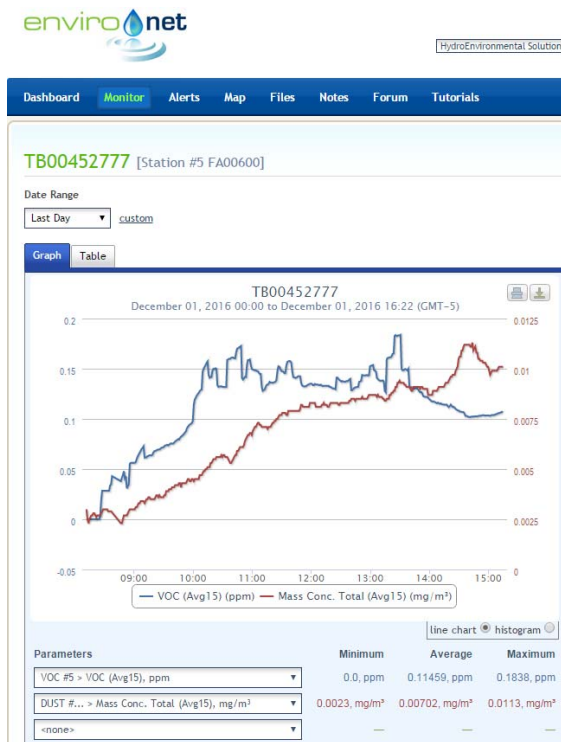
12/01/16 – Station #4 (Downwind)



12/01/16 – Station #2 (Near Buildings)

Marbledale Road BCP Site
Summary of CAMP Results (12/01/16)
December 02, 2016

Page 4



12/01/16 – Station #5 (Morgan Street)



Memo

Date: December 02, 2016

Project: BCP Site # C360143

To: Village of Tuckahoe

From: John Guzewich, HDR

Subject: Summary of CAMP Results During Site Investigation Activities
109-125 Marbledale Road
Tuckahoe, New York
December 02, 2016

This memorandum was prepared by HDR to provide a review of the Community Air Monitoring Plan (CAMP) implementation during Friday December 02, 2016 site work. Site work on this day included shallow soil borings using a direct-push technology (DPT) rig and collection of soil samples for laboratory analysis. Today HES completed the soil boring activities scheduled for the site.

It should be noted that NYSDEC's subcontractor is continuing with their "off-site" work along the east side of Marbledale Road across from the quarry area. The subcontractor is conducting CAMP monitoring (VOCs and Dust) for this work when they are conducting intrusive activities. NYSDEC's subcontractor did not perform any "off-site" activities on this day. CAMP data collected by NYSDEC's subcontractor is not included in these summaries.

DATA EVALUATION AND INTERPRETATIONS

In accordance with the RAWP, a CAMP is required during site activities involving soil disturbance activities. HES is conducting CAMP monitoring during the current RAWP pre-characterization sampling, well installation, and other activities. In accordance with the RAWP, four monitoring stations (upwind, two downwind, and a location between the work area and the nearest occupied building) are set up on-site to collect particulate (Dust) and volatile organic compound (VOC) measurements. In addition, HES has a 5th CAMP monitoring station off-site between the site and the Waverly Early Childhood Center. The CAMP station was situated on Morgan Street, near the intersection of Bellew Ave. for this monitoring event.

Details of the CAMP monitoring procedures and the monitoring equipment used to conduct the CAMP are included in previous data summary memoranda.

Water and vapor/odor suppressant foam are available on-site in the event there is a release of dust or VOCs from site activities. On Friday December 02, 2016, neither water nor foam were required. There were no visible dusts or noticeable odors released from

the work activities for this event. "At hole" air monitoring also occurred with separate instruments.

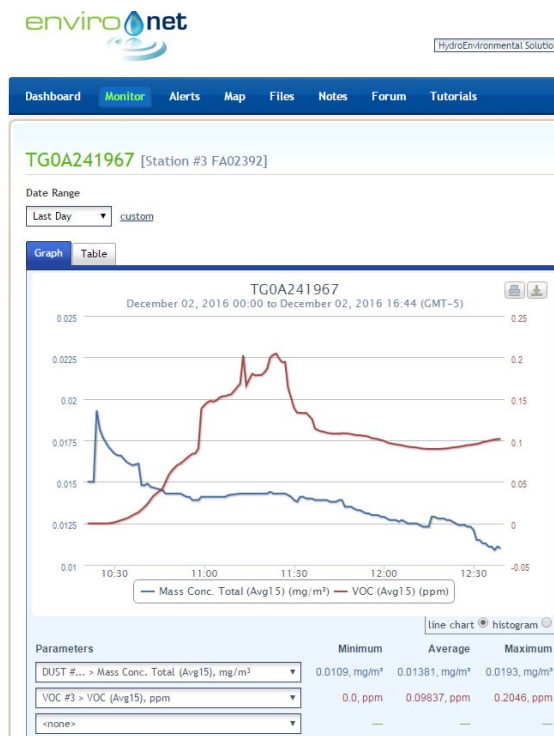
HDR staff was on-site on Friday, December 02, 2016 to observe drilling and CAMP monitoring activities. During this monitoring event there were no exceedances of the CAMP alert triggers at any of the five CAMP stations during site activities. None of the dust or VOC concentrations approached the action levels requiring a work stoppage or corrective measures.

Below is a summary table for the 12/02/2016 CAMP monitoring event.

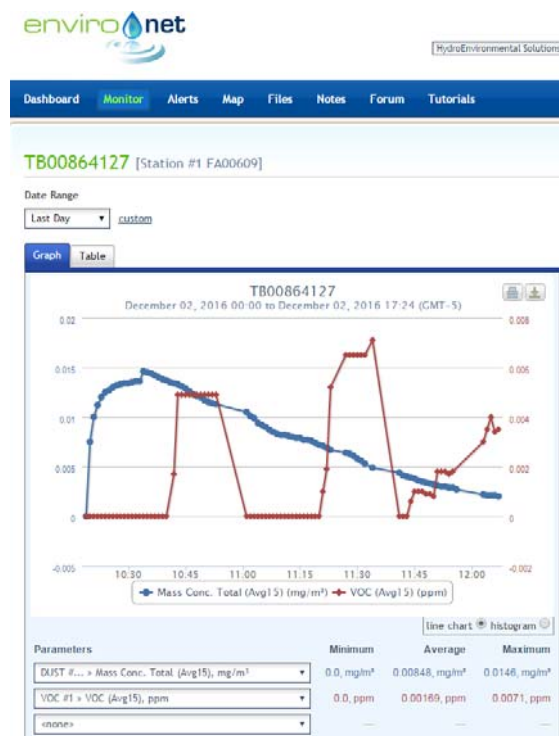
Date: 12/02/16

CAMP Data	Upwind (Sta. 3)	Downwind (Sta. 1)	Downwind (Sta. 4)	Buildings (Sta. 2)	Morgan Str. (Sta. 5)
VOCs (ppm)					
Min. 15-min. Ave.	0.00	0.00	0.00	0.00	0.00
Max. 15-min. Ave.	0.20	0.01	0.03	0.12	0.02
Overall Ave.	0.10	0.00	0.02	0.08	0.01
Dust (mg/m³)					
Min. 15-min. Ave.	0.0109	0.0000	-0.0033	0.0065	0.0057
Max. 15-min. Ave.	0.0193	0.0146	0.0097	0.0138	0.0155
Overall Ave.	0.0138	0.0085	0.0043	0.0094	0.0103

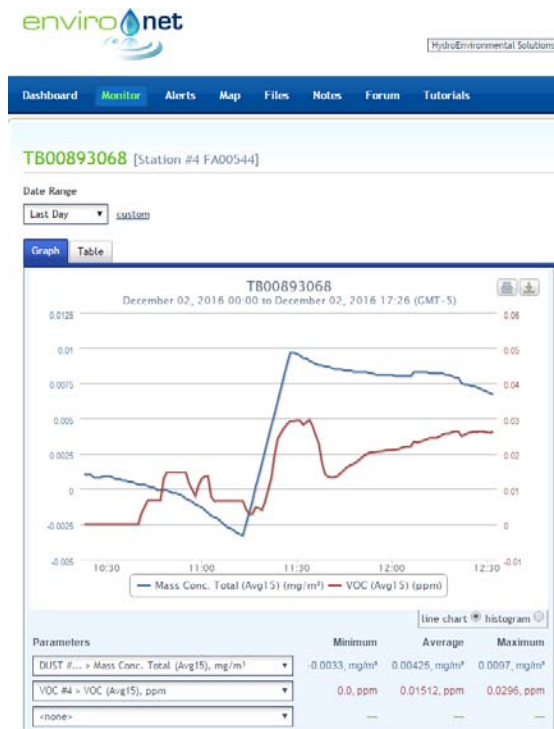
Environet CAMP Data Summary Graphs



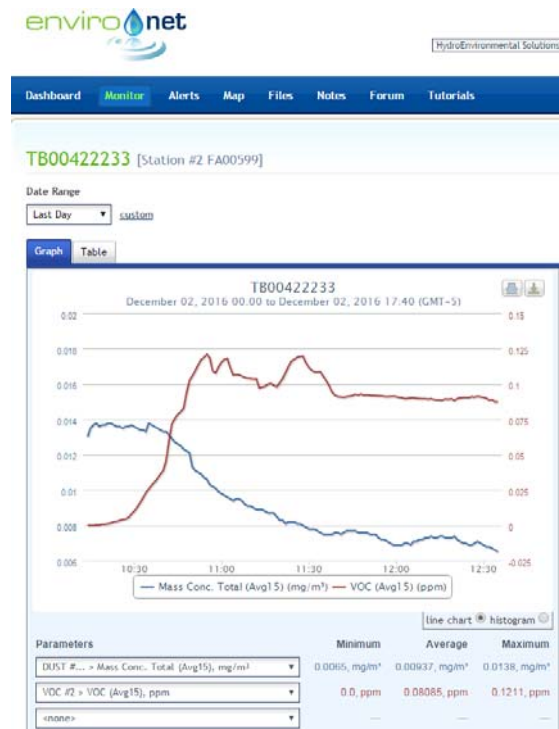
12/02/16 – Station #3 (Upwind)



12/02/16 – Station #1 (Downwind)



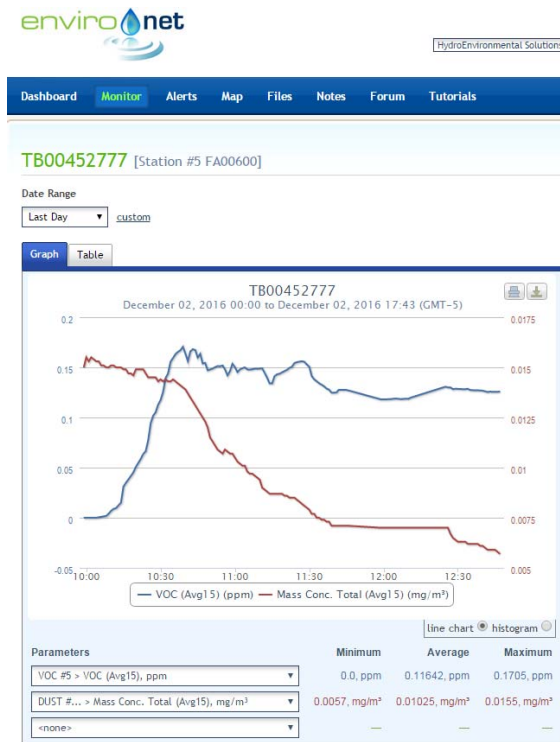
12/02/16 – Station #4 (Downwind)



12/02/16 – Station #2 (Near Buildings)

Marbledale Road BCP Site
Summary of CAMP Results (12/02/16)
December 02, 2016

Page 4



12/02/16 – Station #5 (Morgan Street)