



Memo

Date: March 03, 2017

Project: BCP Site # C360143

To: Village of Tuckahoe

From: John Guzewich, HDR

Subject: Summary of CAMP Results During Site Work
109-125 Marbledale Road
Tuckahoe, New York
March 01, 2017

This memorandum was prepared by HDR to provide a review of the Community Air Monitoring Plan (CAMP) implementation during Wednesday March 01, 2017 site work. On this day HES deployed one set of CAMP stations.

The remediation contractor did not conduct any Source Area excavation or soil disturbance activities on this day. The contractor conducted some site preparation activities including concrete rubble consolidation. Due to the rainy weather conditions the site activities were completed at 11:00 am on this day.

An NYSDEC representative was on site to observe site activities on this day.

There were no NYSDEC "off-site" work activities on this day.

DATA EVALUATION AND INTERPRETATIONS

In accordance with the RAWP, a CAMP is required during site activities involving soil disturbance activities. HES conducted CAMP monitoring during site preparation activities on this day. In accordance with the RAWP, four monitoring stations (one upwind, two downwind, and a location between the work area and the nearest occupied building) were set up around areas of the site where soil disturbance activities were scheduled to be conducted to collect particulate (Dust) and volatile organic compound (VOC) measurements. In addition, HES has an off-site CAMP monitoring station west of the site between the site and the Waverly Early Childhood Center. The CAMP station was situated on Morgan Street, near the intersection of Hall Avenue for this monitoring event. Due to rainy conditions, the contractor decided not to conduct any soil disturbance activities; they consolidated some concrete rubble piles that were generated during the SA excavation activities.

Details of the CAMP monitoring procedures and the monitoring equipment used to conduct the CAMP are included in previous data summary memoranda.

Water and vapor/odor suppressant foam are available on-site in the event there is a release of dust or VOCs from site activities. On Wednesday March 01, 2017, neither water nor foam were required for odors or vapors emanating from the excavation areas. There were no noticeable visible dusts released from the work activities during this monitoring event.

A NYSDEC representative was on site on Wednesday March 01, 2017 to observe the site activities until it was determined that no soil disturbance activities would be conducted on this day. During this monitoring event there were no exceedances of the CAMP alert triggers at any of the nine operating CAMP stations during site activities. None of the dust or VOC concentrations approached the action levels requiring a work stoppage or corrective measures.

Currently there are three full 20-yd roll-offs and one partially filled roll-off containing the source materials from the SA-3 excavation (antiperspirant spray cans and jars of antiperspirant cream). The roll-offs are covered with vinyl covers secured in place with elastic tie-down cords; the contractor is waiting for direction and approval from their disposal facilities for the proper disposal of this source material.

It was noted that the upwind CAMP station was reading elevated VOC concentrations at the beginning of the monitoring event; there were no soil disturbance activities going on at this time. It is likely this PID was affected by the rainy weather conditions at this time.

Below is a summary table for the 03/01/2017 CAMP monitoring event.

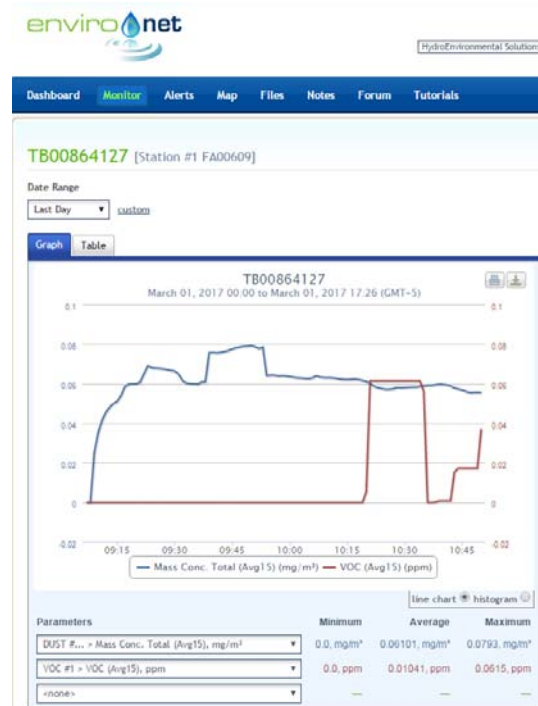
Date: 03/01/17

CAMP Data	Upwind (Sta. 3)	Downwind (Sta. 1)	Downwind (Sta. 4)	Buildings (Sta. 2)	Morgan Str. (Sta. 5)
VOCs (ppm)					
Min. 15-min. Ave.	0.00	0.00	0.00	0.00	0.00
Max. 15-min. Ave.	2.4	0.06	0.26	0.09	0.22
Overall Ave.	0.39	0.01	0.04	0.01	0.14
Dust (mg/m³)					
Min. 15-min. Ave.	0.0000	0.0000	0.0000	0.0000	0.0604
Max. 15-min. Ave.	0.0826	0.0793	0.0747	0.0927	0.0727
Overall Ave.	0.0434	0.0610	0.0648	0.0781	0.0665

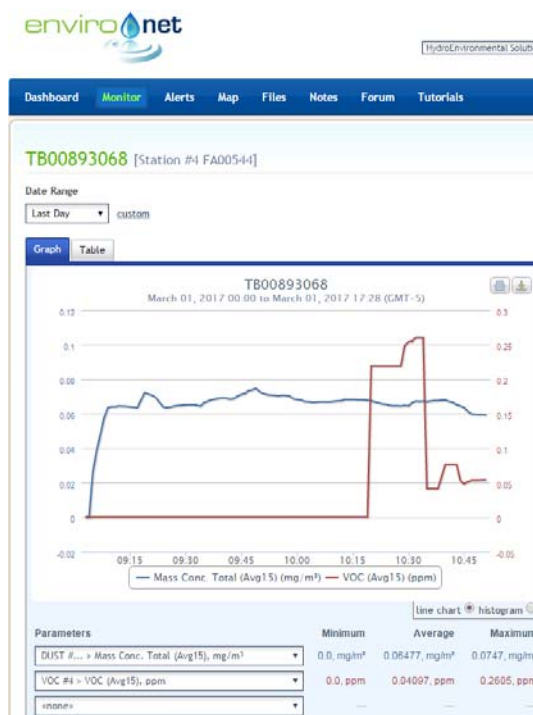
EnviroNet CAMP Data Summary Graphs



03/01/17 - Station #3 (Upwind)



03/01/17 - Station #1 (Downwind)



03/01/17 - Station #4 (Downwind)



03/01/17 - Station #2 (Near Buildings)

Marbledale Road BCP Site
Summary of CAMP Results (03/01/17)
March 03, 2017

Page 5



03/01/17 - Station #5 (Morgan Street)



Memo

Date: March 03, 2017

Project: BCP Site # C360143

To: Village of Tuckahoe

From: John Guzewich, HDR

Subject: Summary of CAMP Results During Site Work
109-125 Marbledale Road
Tuckahoe, New York
March 02, 2017

This memorandum was prepared by HDR to provide a review of the Community Air Monitoring Plan (CAMP) implementation during Thursday March 02, 2017 site work. On this day HES deployed two sets of CAMP stations so that they would be able to effectively monitor work being conducted by the contractor in different portions of the site simultaneously.

The contractor continued excavation activities in Source Area 1 (SA-1). Based on discussions between NYSDEC and NYSDOH, HES, and the contractor, earlier this week, excavation activities in this area were not conducted within 20 feet of the property fence line. NYSDEC and NYSDOH have requested additional measures be taken when there are excavation activities that are within 20 feet of the property fence where the public has access (along Marbledale Road). A total of 15 trucks of soil were loaded and sent off site for disposal on March 02, 2017. In addition, the contractor was removing acceptable soil from the southwestern portion of the site and stockpiling it for backfilling at SA-1 and also moving and consolidating stockpiles of concrete rubble that has been removed from the SA excavation areas.

The remediation contractor completed excavation activities in the southern portion of the SA-1 area (SA-1A). This area was excavated to the target depth; end point samples were collected and this portion of the excavation was partially backfilled. Excavation activities for the entire SA-1 area were not completed; the excavation area was covered and fenced at the end of the day.

An NYSDEC representative was on site to observe site activities on this day. It was confirmed that the CAMP monitoring stations were appropriately re-positioned as needed during the course of the day to account for the above-described work and locations of intrusive work. When a given source area was completed or not being worked on, it was covered and monitored periodically with the hand-held air monitoring instruments that are employed in and around the active work areas.

There were no NYSDEC “off-site” work activities on this day.

DATA EVALUATION AND INTERPRETATIONS

In accordance with the RAWP, a CAMP is required during site activities involving soil disturbance activities. As noted previously, the contractor was planning to conduct excavation and/or soil disturbance activities at two areas of the site simultaneously on this day; therefore, HES deployed an additional four CAMP stations to effectively monitor the work activities occurring at different portions of the site.

HES conducted CAMP monitoring during soil excavation, truck loading, and backfilling activities associated with SA-1 in the southern portion of the site and they also conducted CAMP monitoring during soil removal and stockpiling activities (for backfilling), and concrete rubble consolidation activities.

In accordance with the RAWP, four monitoring stations (upwind, two downwind, and a location between the work area and the nearest occupied building) were set up around areas of the site where soil disturbance activities were conducted to collect particulate (Dust) and volatile organic compound (VOC) measurements. A total of eight CAMP stations were deployed at the site on this day. In addition, HES has an off-site CAMP monitoring station west of the site between the site and the Waverly Early Childhood Center. Since the contractor was working in the southern portion of the site at SA-1 that is near the property fence, the off-site CAMP station was positioned near the southern end of Morgan Street, near the Hall Avenue intersection for this monitoring event. The eight onsite monitoring stations were repositioned as needed based on the excavation areas where the contractor was working.

Details of the CAMP monitoring procedures and the monitoring equipment used to conduct the CAMP are included in previous data summary memoranda.

Water and vapor/odor suppressant foam are available on-site in the event there is a release of dust or VOCs from site activities. On Thursday March 02, 2017, neither water nor foam were required for odors or vapors emanating from the excavation areas. There were no noticeable visible dusts released from the work activities during this monitoring event.

A NYSDEC representative was on site on Thursday March 02, 2017 to observe the excavation activities, backfilling activities, and monitoring activities in and around the work areas. The excavation areas were covered with plastic at the end of the day. During this monitoring event there were no exceedances of the CAMP alert triggers at any of the nine

operating CAMP stations during site activities. None of the dust or VOC concentrations approached the action levels requiring a work stoppage or corrective measures.

The NYSDEC inspector observed a person walking back and forth in front of the site on this day in the afternoon; it was noted that this person had an air sampling canister in a backpack with the sample inlet sticking out of the top of the pack. It was assumed this person was collecting an air sample for VOC analysis.

.

Currently there are three full 20-yd roll-offs and one partially filled roll-off containing the source materials from the SA-3 excavation (antiperspirant spray cans and jars of antiperspirant cream). The roll-offs are covered with vinyl covers secured in place with elastic tie-down cords; the contractor is waiting for direction and approval from their disposal facilities for the proper disposal of this source material. PID readings and FID readings around the site, including the covered roll-off containers containing the source materials, were all at ambient/background concentrations at the end of the day.

Below is a summary table for the 03/02/2017 CAMP monitoring event.

Date: 03/02/17

CAMP Data	Upwind (Sta. 3)	Downwind (Sta. 1)	Downwind (Sta. 4)	Buildings (Sta. 2)	Morgan Str. (Sta. 5)
VOCs (ppm)					
Min. 15-min. Ave.	0.00	0.01	0.00	0.01	0.06
Max. 15-min. Ave.	0.05	0.18	0.12	0.15	0.36
Overall Ave.	0.03	0.10	0.08	0.12	0.22
Dust (mg/m³)					
Min. 15-min. Ave.	0.0000	0.0011	0.0000	0.0042	0.0019
Max. 15-min. Ave.	0.0100	0.0269	0.0415	0.0460	0.0048
Overall Ave.	0.0039	0.0096	0.0176	0.0117	0.0032

Date: 03/02/17

CAMP Data	Upwind (Sta. 7)	Downwind (Sta. 6)	Downwind (Sta. 9)	Buildings (Sta. 8)
VOCs (ppm)				
Min. 15-min. Ave.	0.00	0.01	0.00	0.00
Max. 15-min. Ave.	0.38	0.34	0.10	0.60
Overall Ave.	0.09	0.13	0.04	0.08
Dust (mg/m³)				
Min. 15-min. Ave.	0.0023	0.0000	0.0000	0.0043
Max. 15-min. Ave.	0.0074	0.0081	0.0295	0.0162
Overall Ave.	0.0039	0.0030	0.0113	0.0097

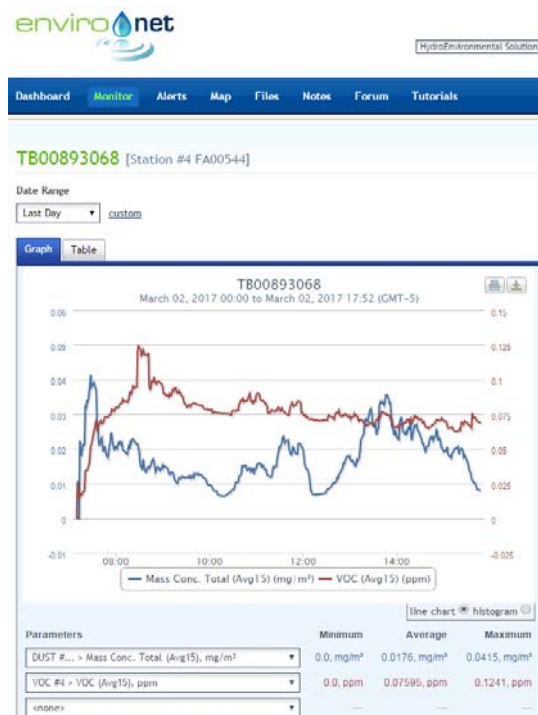
EnviroNet CAMP Data Summary Graphs



03/02/17 - Station #3 (Upwind)



03/02/17 - Station #1 (Downwind)



03/02/17 - Station #4 (Downwind)



03/02/17 - Station #2 (Near Buildings)

Marbledale Road BCP Site
Summary of CAMP Results (03/02/17)
March 03, 2017

Page 7



03/02/17 - Station #7 (Upwind)



03/02/17 - Station #6 (Downwind)



03/02/17 - Station #9 (Downwind)



03/02/17 - Station #8 (Near Buildings)

Marbledale Road BCP Site
Summary of CAMP Results (03/02/17)
March 03, 2017

Page 8



03/02/17 - Station #5 (Morgan Street)



Memo

Date: March 06, 2017

Project: BCP Site # C360143

To: Village of Tuckahoe

From: John Guzewich, HDR

Subject: Summary of CAMP Results During Site Work
109-125 Marbledale Road
Tuckahoe, New York
March 03, 2017

This memorandum was prepared by HDR to provide a review of the Community Air Monitoring Plan (CAMP) implementation during Friday March 03, 2017 site work. The remediation contractor continued with excavation activities in Source Area 1 (SA-1). The Excavation and backfilling activities at SA-1 were not completed; the excavation area was covered and fenced at the end of the day. On this day HES deployed one set of CAMP stations to monitor work being conducted by the contractor.

Based on discussions between NYSDEC and NYSDOH, HES, and the contractor on February 28th, excavation activities in this area were not conducted within 20 feet of the property fence line. NYSDEC and NYSDOH have requested additional precautions for excavation activities that are within 20 feet of the property fence where the public has access (along Marbledale Road). A total of 14 trucks of soil were loaded and sent off site for disposal on March 03, 2017.

An HDR representative was on site to observe site activities on this day. It was confirmed that the CAMP monitoring stations were appropriately re-positioned as needed during the course of the day to account for the above-described work and locations of intrusive work. When a given source area was completed or not being worked on, it was covered and monitored periodically with the hand-held air monitoring instruments that are employed in and around the active work areas.

There were no NYSDEC "off-site" work activities on this day.

DATA EVALUATION AND INTERPRETATIONS

In accordance with the RAWP, a CAMP is required during site activities involving soil disturbance activities. HES conducted CAMP monitoring during soil excavation, truck loading, and backfilling activities associated with the SA-1 area on this day. In accordance with the RAWP, four monitoring stations (upwind, two downwind, and a location between the work area and the nearest occupied building) are to be set up on-site to collect particulate (Dust) and volatile organic compound (VOC) measurements. In addition, HES has a 5th CAMP monitoring station off-site between the site and the Waverly Early Childhood Center. The CAMP station was situated on Morgan Street, near the intersection of Hall Avenue for this monitoring event. The four onsite monitoring stations were repositioned as needed based on the excavation areas where the contractor was working.

Details of the CAMP monitoring procedures and the monitoring equipment used to conduct the CAMP are included in previous data summary memoranda.

Water and vapor/odor suppressant foam are available on-site in the event there is a release of dust or VOCs from site activities. On Friday March 03, 2017, neither water nor foam were required for odors or vapors emanating from the excavation areas. There were no noticeable visible dusts released from the work activities during this monitoring event.

An HDR representative was on site on Friday March 03, 2017 to observe the excavation activities, backfilling activities, and monitoring activities in and around the work areas. The excavation areas were covered with plastic at the end of the day. During this monitoring event there were no exceedances of the CAMP alert triggers at any of the five operating CAMP stations during site activities. None of the dust or VOC concentrations approached the action levels requiring a work stoppage or corrective measures.

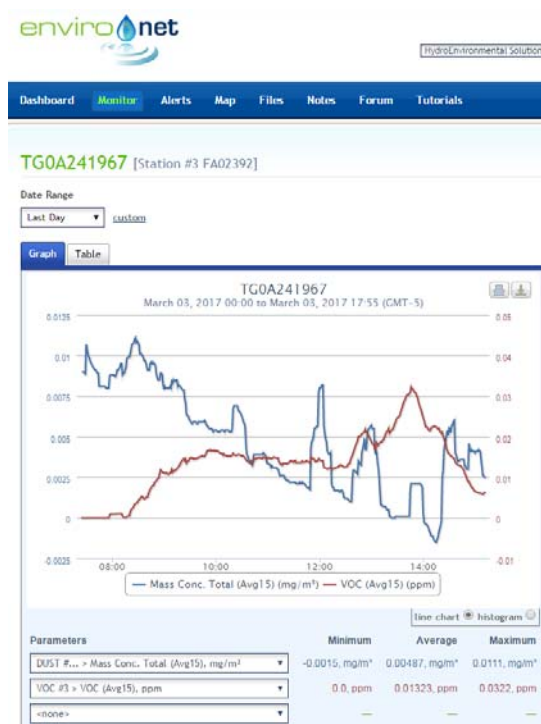
Currently there are three full 20-yd roll-offs and one partially filled roll-off containing the source materials from the SA-3 excavation (antiperspirant spray cans and jars of antiperspirant cream). The roll-offs are covered with vinyl covers secured in place with elastic tie-down cords; the contractor is waiting for direction and approval from their disposal facilities for the proper disposal of this source material. PID readings and FID readings around the site, including the covered roll-off containers containing the source materials, were at or near ambient/background concentrations at the end of the day.

Below is a summary table for the 03/03/2017 CAMP monitoring event.

Date: 03/03/17

CAMP Data	Upwind (Sta. 3)	Downwind (Sta. 1)	Downwind (Sta. 4)	Buildings (Sta. 6)	Morgan Str. (Sta. 5)
VOCs (ppm)					
Min. 15-min. Ave.	0.00	0.01	0.00	0.00	0.00
Max. 15-min. Ave.	0.03	0.05	0.07	0.00	0.40
Overall Ave.	0.01	0.02	0.01	0.00	0.08
Dust (mg/m³)					
Min. 15-min. Ave.	0.0000	0.0000	0.0000	0.0013	0.0044
Max. 15-min. Ave.	0.0111	0.0475	0.0521	0.0261	0.0115
Overall Ave.	0.0049	0.0151	0.0149	0.0089	0.0080

Environet CAMP Data Summary Graphs



03/03/17 - Station #3 (Upwind)



03/03/17 - Station #1 (Downwind)



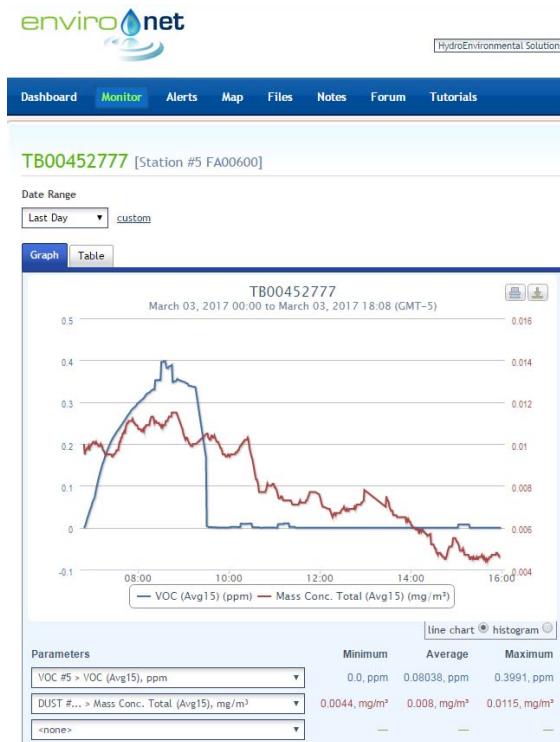
03/03/17 - Station #4 (Downwind)



03/03/17 - Station #6 (Near Buildings)

Marbledale Road BCP Site
 Summary of CAMP Results (03/03/17)
 March 06, 2017

Page 5



03/03/17 - Station #5 (Morgan Street)



Memo

Date: March 08, 2017

Project: BCP Site # C360143

To: Village of Tuckahoe

From: John Guzewich, HDR

Subject: Summary of CAMP Results During Site Work
109-125 Marbledale Road
Tuckahoe, New York
March 06, 2017

This memorandum was prepared by HDR to provide a review of the Community Air Monitoring Plan (CAMP) implementation during Monday March 06, 2017 site work. The remediation contractor continued with excavation activities in Source Area 1 (SA-1). Two adjacent fuel tanks (estimated to be 2,000 gal. tanks) were encountered just north of the southern entrance gate. The tanks were exposed to determine their size and then they were sprayed with foam and covered with plastic. HES contacted a tank removal firm to arrange for proper removal and disposal of the tanks. The contractor began excavation activities in Source Area 11 (SA-11) which is also referred to as the SB-1 area (south of SA-1). In addition, the contractor removed acceptable soil from the area north and west of the SA-2 area and used it for backfill material in SA-1. The excavation and backfilling activities at SA-1 and SA-11 were not completed; the excavation areas were covered and fenced at the end of the day. On this day HES deployed one set of CAMP stations to monitor work being conducted by the contractor. HES deployed an additional CAMP station since they were somewhat close to Marbledale Road. They positioned the stations such that they had one station near the building north of SA-1 (Station #3), one station between the excavation area and Marbledale Road (Station # 2A), two downwind stations south of the work area (Station #1 and Station #4) and one upwind station located northwest of the work area (Station #9).

A total of 15 trucks of soil were loaded and sent off site for disposal on March 06, 2017.

A NYSDEC representative was on site to observe site activities on this day. It was confirmed that the CAMP monitoring stations were appropriately re-positioned as needed during the course of the day to account for the above-described work and locations of intrusive work. When a given source area was completed or not being worked on, it was covered and monitored periodically with the hand-held air monitoring instruments that are employed in and around the active work areas.

There were no NYSDEC "off-site" work activities on this day.

DATA EVALUATION AND INTERPRETATIONS

In accordance with the RAWP, a CAMP is required during site activities involving soil disturbance activities. HES conducted CAMP monitoring during soil excavation, truck loading, and backfilling activities associated with the SA-1 and SA-11 areas on this day. In accordance with the RAWP, four monitoring stations (upwind, two downwind, and a location between the work area and the nearest occupied building) are to be set up on-site to collect particulate (Dust) and volatile organic compound (VOC) measurements. In addition, HES has a 5th CAMP monitoring station off-site between the site and the Waverly Early Childhood Center. The CAMP station was situated on Morgan Street, near the intersection of Hall Avenue for this monitoring event. As discussed previously, HES deployed an additional CAMP station on this day in the area of the SA-1 excavation along the property fence adjacent to Marbledale Road. The five onsite monitoring stations were repositioned as needed based on the excavation areas where the contractor was working.

Details of the CAMP monitoring procedures and the monitoring equipment used to conduct the CAMP are included in previous data summary memoranda.

Water and vapor/odor suppressant foam are available on-site in the event there is a release of dust or VOCs from site activities. On Monday March 06, 2017, when the fuel tanks were uncovered in the SA-1 excavation area in the morning, there was a moderate to strong gasoline odor in the immediate area of the tanks. As a precaution and in accordance with the work plan, the tanks were foamed and also covered with plastic. Neither water nor foam were required for odors or vapors emanating from the soils and/or debris in the excavation areas. There were no noticeable visible dusts released from the work activities during this monitoring event.

It was noted that the near-building CAMP station registered an elevated VOC concentration for several 1-minute intervals between at 8:22 and 8:24 am that caused a 15-min average of 1.7 ppm. There were several other somewhat elevated PID readings around this time as well. At the time of the elevated readings, Station #3 was positioned north of the SA-1 area adjacent to the building. The contractor encountered the fuel tanks in SA-1, south of the building at the time of these elevated readings. It is likely the elevated PID readings were caused by the gasoline vapors that were released when the tanks were discovered and opened as part of the investigation activities to determine what was in them. After the investigation of the tanks was completed the tanks were closed, foamed, and covered with plastic and there were no additional elevated PID readings at Station #3 and there were no additional noticeable gasoline odors in the air around the tanks. This indicates the PID was responsive to these vapors that were released from the tank and excavation area. See the table below showing the 1-minute concentrations around the time of the registered elevated PID readings.

TG0A241967: Station #3 (Near Building Location)		
Date / Time	1-Minute Reading (ppm)	15-Minute Average (ppm)
3/6/2017 8:18	0.0	0.0
3/6/2017 8:19	0.0	0.0
3/6/2017 8:20	0.0	0.0
3/6/2017 8:21	0.0	0.0
3/6/2017 8:22	7.7	0.51
3/6/2017 8:23	7.5	1.01
3/6/2017 8:24	6.2	1.42
3/6/2017 8:25	0.0	1.42
3/6/2017 8:26	0.0	1.42
3/6/2017 8:27	0.0	1.42
3/6/2017 8:28	0.0	1.42
3/6/2017 8:29	0.0	1.42
3/6/2017 8:30	3.8	1.67
3/6/2017 8:31	0.0	1.67
3/6/2017 8:32	0.9	1.73
3/6/2017 8:33	0.0	1.73
3/6/2017 8:34	0.0	1.73
3/6/2017 8:35	0.0	1.73
3/6/2017 8:36	0.0	1.73
3/6/2017 8:37	0.0	1.22
3/6/2017 8:38	0.0	0.72
3/6/2017 8:39	0.0	0.31
3/6/2017 8:40	0.0	0.31
3/6/2017 8:41	0.0	0.31
3/6/2017 8:42	0.8	0.36
3/6/2017 8:43	0.8	0.42
3/6/2017 8:44	0.0	0.42
3/6/2017 8:45	0.0	0.17
3/6/2017 8:46	0.0	0.17
3/6/2017 8:47	0.0	0.11

A NYSDEC representative was on site on Monday March 06, 2017 to observe the excavation activities, backfilling activities, and monitoring activities in and around the work areas. The excavation areas were covered with plastic at the end of the day. During this monitoring event there were no exceedances of the CAMP alert triggers at any of the five operating CAMP stations during site activities. None of the dust or VOC concentrations approached the action levels requiring a work stoppage or corrective measures.

Currently there are three full 20-yd roll-offs and one partially filled roll-off containing the source materials from the SA-3 excavation (antiperspirant spray cans and jars of antiperspirant cream). The roll-offs are covered with vinyl covers secured in place with elastic tie-down cords; the contractor is waiting for direction and approval from their disposal facilities for the proper disposal of this source material. PID readings and FID readings around the site, including the covered roll-off containers containing the source materials, were at or near ambient/background concentrations at the end of the day.

Below is a summary table for the 03/06/2017 CAMP monitoring event.

Date: 03/06/17

CAMP Data	Buildings (Sta. 3)	Downwind (Sta. 1)	Downwind (Sta. 4)	Marbledale (Sta. 2A)	Morgan Str. (Sta. 5)
VOCs (ppm)					
Min. 15-min. Ave.	0.00	0.00	0.00	0.00	0.00
Max. 15-min. Ave.	1.73*	0.02	0.04	0.07	0.00
Overall Ave.	0.08	0.00	0.00	0.03	0.00
Dust (mg/m³)					
Min. 15-min. Ave.	0.0017	0.0065	0.0121	0.0114	0.0150
Max. 15-min. Ave.	0.0406	0.0323	0.0413	0.0371	0.0511
Overall Ave.	0.0146	0.0183	0.0259	0.0239	0.0329

Date: 03/06/17

CAMP Data	Upwind (Sta. 9)
VOCs (ppm)	
Min. 15-min. Ave.	0.00
Max. 15-min. Ave.	0.13
Overall Ave.	0.08
Dust (mg/m³)	
Min. 15-min. Ave.	0.0019
Max. 15-min. Ave.	0.0283
Overall Ave.	0.0099

Notes

- Station #2A and #1 Dust monitors were not transmitting Dust data to the Environet site until approximately 0930 for this CAMP monitoring event.

* - There were several elevated 1-minute readings on the PID at this location around the time the fuel tanks were discovered.

Environet CAMP Data Summary Graphs



03/06/17 - Station #3 (Near Building)



03/06/17 - Station #1 (Downwind)



03/06/17 - Station #4 (Downwind)



03/06/17 - Station #2A (Along Marbledale Rd.)



03/06/17 - Station #5 (Morgan Street)



03/06/17 - Station #9 (Upwind)



Memo

Date: March 08, 2017

Project: BCP Site # C360143

To: Village of Tuckahoe

From: John Guzewich, HDR

Subject: Summary of CAMP Results During Site Work
109-125 Marbledale Road
Tuckahoe, New York
March 07, 2017

This memorandum was prepared by HDR to provide a review of the Community Air Monitoring Plan (CAMP) implementation during Tuesday March 07, 2017 site work. The remediation contractor continued excavation activities in Source Area 11 (SA-11) which is also referred to as the SB-1 area. The Excavation activities at SA-11 were not completed; the excavation area was covered and fenced at the end of the day. In addition, the contractor removed acceptable soil from the area north and west of the SA-2 area and used it for backfill material in SA-1 in the area of the southern entrance. On this day HES deployed one set of CAMP stations to monitor work being conducted by the contractor. A total of 16 trucks of soil were loaded and sent off site for disposal on March 07, 2017.

An HDR representative and a NYSDEC representative were on site to observe site activities on this day. It was confirmed that the CAMP monitoring stations were appropriately re-positioned as needed during the course of the day to account for the above-described work and locations of intrusive work. When a given source area was completed or not being worked on, it was covered and monitored periodically with the hand-held air monitoring instruments that are employed in and around the active work areas.

There were no NYSDEC "off-site" work activities on this day.

DATA EVALUATION AND INTERPRETATIONS

In accordance with the RAWP, a CAMP is required during site activities involving soil disturbance activities. HES conducted CAMP monitoring during soil excavation, and truck loading activities associated with the SA-11 area, and backfilling activities associated with the SA-1 area on this day. In accordance with the RAWP, four monitoring stations (upwind, two downwind, and a location between the work area and the nearest occupied building) are to be set up on-site to collect particulate (Dust) and volatile organic compound (VOC) measurements. In addition, HES has a 5th CAMP monitoring station off-site between the site and the Waverly Early Childhood Center. The CAMP station was situated on Morgan Street, near the intersection of Hall Avenue for this monitoring event. The four onsite monitoring stations were repositioned as needed based on the excavation areas where the contractor was working.

Details of the CAMP monitoring procedures and the monitoring equipment used to conduct the CAMP are included in previous data summary memoranda.

Water and vapor/odor suppressant foam are available on-site in the event there is a release of dust or VOCs from site activities. On Tuesday March 08, 2017, neither water nor foam were required for odors or vapors emanating from the excavation areas. There were no noticeable visible dusts released from the work activities during this monitoring event. There were no noticeable gasoline or fuel odors in the area of the fuel tanks that were encountered on the previous day. The tanks were foamed and remained covered with plastic sheeting.

An HDR representative and a NYSDEC representative were on site on Tuesday March 07, 2017 to observe the excavation activities, backfilling activities, and monitoring activities in and around the work areas. The excavation areas were covered with plastic at the end of the day. During this monitoring event there were no exceedances of the CAMP alert triggers at any of the five operating CAMP stations during site activities. None of the dust or VOC concentrations approached the action levels requiring a work stoppage or corrective measures.

Currently there are three full 20-yd roll-offs and one partially filled roll-off containing the source materials from the SA-3 excavation (antiperspirant spray cans and jars of antiperspirant cream). The roll-offs are covered with vinyl covers secured in place with elastic tie-down cords; the contractor is waiting for direction and approval from their disposal facilities for the proper disposal of this source material.

Below is a summary table for the 03/07/2017 CAMP monitoring event.

Date: 03/07/17

CAMP Data	Upwind (Sta. 3)	Downwind (Sta. 1)	Downwind (Sta. 4)	Buildings (Sta. 2A)	Morgan Str. (Sta. 5)
VOCs (ppm)					
Min. 15-min. Ave.	0.00	0.00	0.00	0.00	0.00
Max. 15-min. Ave.	0.00	0.11	0.19	0.17	0.00
Overall Ave.	0.00	0.01	0.01	0.01	0.00
Dust (mg/m³)					
Min. 15-min. Ave.	0.0098	0.0177	0.0190	0.0137	0.0150
Max. 15-min. Ave.	0.0514	0.0472	0.0540	0.0500	0.0511
Overall Ave.	0.0236	0.0314	0.0364	0.0317	0.0329

Environet CAMP Data Summary Graphs



03/07/17 - Station #3 (Upwind)



03/07/17 - Station #1 (Downwind)



03/07/17 - Station #4 (Downwind)



03/07/17 - Station #2A (Near Buildings)

Marbledale Road BCP Site
Summary of CAMP Results (03/07/17)
March 08, 2017

Page 5



03/07/17 - Station #5 (Morgan Street)



Memo

Date: March 09, 2017

Project: BCP Site # C360143

To: Village of Tuckahoe

From: John Guzewich, HDR

Subject: Summary of CAMP Results During Site Work
109-125 Marbledale Road
Tuckahoe, New York
March 08, 2017

This memorandum was prepared by HDR to provide a review of the Community Air Monitoring Plan (CAMP) implementation during Wednesday March 08, 2017 site work. On this day HES deployed one set of CAMP stations.

The remediation contractor did not conduct any Source Area excavation activities on this day. The contractor removed some acceptable on-site soils and stockpiled the soils near the SA-4 area and conducted some site preparation activities including concrete rubble consolidation.

An NYSDEC representative was on site to observe site activities on this day.

There were no NYSDEC "off-site" work activities on this day.

DATA EVALUATION AND INTERPRETATIONS

In accordance with the RAWP, a CAMP is required during site activities involving soil disturbance activities. HES conducted CAMP monitoring during site preparation activities on this day. In accordance with the RAWP, four monitoring stations (one upwind, two downwind, and a location between the work area and the nearest occupied building) were set up around areas of the site where soil disturbance activities were scheduled to be conducted to collect particulate (Dust) and volatile organic compound (VOC) measurements. In addition, HES has an off-site CAMP monitoring station west of the site between the site and the Waverly Early Childhood Center. The CAMP station was situated on Morgan Street, near the intersection of Hall Avenue for this monitoring event. The contractor removed some acceptable soils and stockpiled them near SA-4 for backfill material and they consolidated some concrete rubble piles that were generated during the SA excavation activities.

Details of the CAMP monitoring procedures and the monitoring equipment used to conduct the CAMP are included in previous data summary memoranda.

Water and vapor/odor suppressant foam are available on-site in the event there is a release of dust or VOCs from site activities. On Wednesday March 08, 2017, neither water nor foam were required for odors or vapors emanating from the excavation areas. There were no noticeable visible dusts released from the work activities during this monitoring event. The fuel tanks encountered in the SA-1 area on March 06, 2017 remain foamed and covered with plastic; there were no reported noticeable fuel or gasoline odors in this area.

A NYSDEC representative was on site on Wednesday March 08, 2017 to observe the site activities including acceptable soil stockpiling activities and concrete rubble relocation activities. During this monitoring event there were no exceedances of the CAMP alert triggers at any of the five operating CAMP stations during site activities. None of the dust or VOC concentrations approached the action levels requiring a work stoppage or corrective measures.

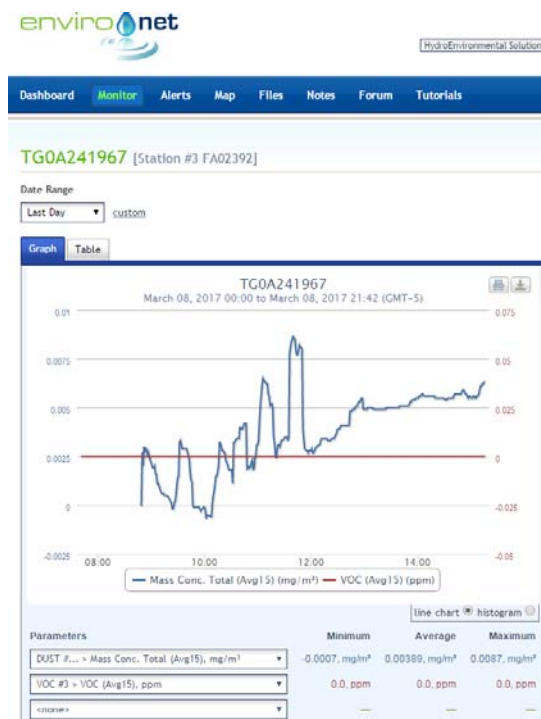
Currently there are three full 20-yd roll-offs and one partially filled roll-off containing the source materials from the SA-3 excavation (antiperspirant spray cans and jars of antiperspirant cream). The roll-offs are covered with vinyl covers secured in place with elastic tie-down cords; the contractor is waiting for direction and approval from their disposal facilities for the proper disposal of this source material.

Below is a summary table for the 03/08/2017 CAMP monitoring event.

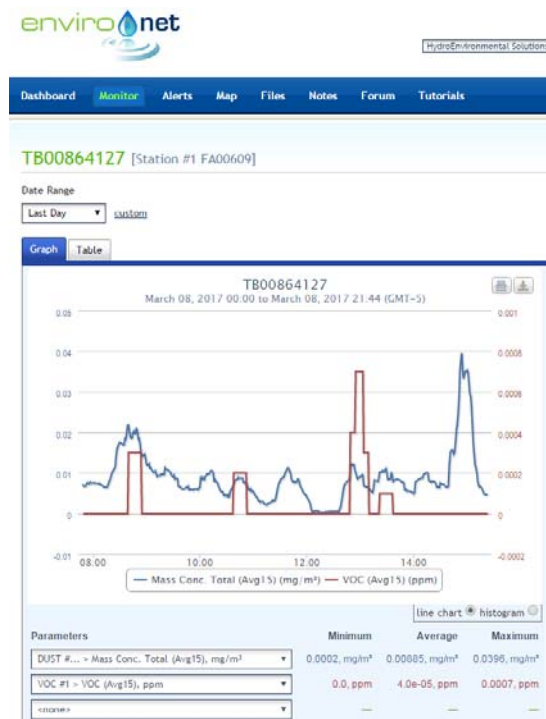
Date: 03/08/17

CAMP Data	Upwind (Sta. 3)	Downwind (Sta. 1)	Downwind (Sta. 4)	Buildings (Sta. 2A)	Morgan Str. (Sta. 6)
VOCs (ppm)					
Min. 15-min. Ave.	0.00	0.00	0.00	0.00	0.00
Max. 15-min. Ave.	0.00	0.00	0.03	0.11	0.16
Overall Ave.	0.00	0.00	0.00	0.05	0.03
Dust (mg/m³)					
Min. 15-min. Ave.	0.0000	0.0002	0.0049	0.0000	0.0000
Max. 15-min. Ave.	0.0087	0.0396	0.0146	0.0109	0.0041
Overall Ave.	0.0039	0.0089	0.0084	0.0025	0.0007

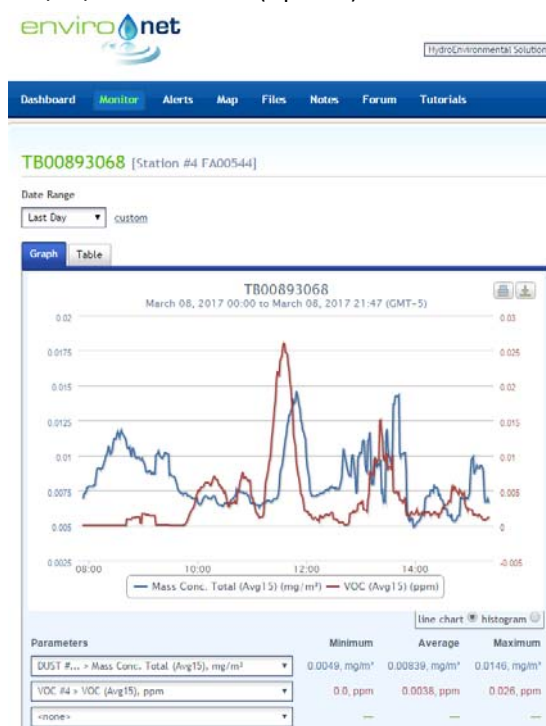
Environet CAMP Data Summary Graphs



03/08/17 - Station #3 (Upwind)



03/08/17 - Station #1 (Downwind)



03/08/17 - Station #4 (Downwind)



03/08/17 - Station #2A (Near Buildings)

Marbledale Road BCP Site
Summary of CAMP Results (03/08/17)
March 09, 2017

Page 4



03/08/17 - Station #6 (Morgan Street)



Memo

Date: March 10, 2017

Project: BCP Site # C360143

To: Village of Tuckahoe

From: John Guzewich, HDR

Subject: Summary of CAMP Results During Site Work
109-125 Marbledale Road
Tuckahoe, New York
March 09, 2017

This memorandum was prepared by HDR to provide a review of the Community Air Monitoring Plan (CAMP) implementation during Thursday March 09, 2017 site work. The remediation contractor continued excavation activities in Source Area 11 (SA-11) which is also referred to as the SB-1 area. The Excavation activities at SA-11 were not completed; the excavation area was covered and fenced at the end of the day. In addition, the contractor conducted a test pit in the SA-4 area to get a better idea of the source materials in this location. They confirmed there was additional source material in this location including "Mitchem" products (creams) as well as other debris. The test pit was backfilled. The contractor also removed acceptable soil from the area north and west of the SA-2 area and stockpiled it for backfill material in SA-1 and SA-11 when needed. On this day HES deployed one set of CAMP stations to monitor work being conducted by the contractor; when the contractor advanced the test pit at SA-4 HES deployed 2 additional CAMP stations to monitor the test pit activities and the SA-11 excavation activities at the same time. A total of 16 trucks of soil were loaded and sent off site for disposal on March 09, 2017.

A NYSDEC representative was on site to observe site activities on this day. It was confirmed that the CAMP monitoring stations were appropriately re-positioned as needed during the course of the day to account for the above-described work and locations of intrusive work. When a given source area was completed or not being worked on, it was covered and monitored periodically with the hand-held air monitoring instruments that are employed in and around the active work areas.

There were no NYSDEC "off-site" work activities on this day.

DATA EVALUATION AND INTERPRETATIONS

In accordance with the RAWP, a CAMP is required during site activities involving soil disturbance activities. HES conducted CAMP monitoring during soil excavation, and truck loading activities associated with the SA-11 area, and backfilling activities associated with the SA-1 area on this day. In accordance with the RAWP, four monitoring stations (upwind, two downwind, and a location between the work area and the nearest occupied building) are to be set up on-site to collect particulate (Dust) and volatile organic compound (VOC) measurements. In addition, HES has a 5th CAMP monitoring station off-site between the site and the Waverly Early Childhood Center. The CAMP station was situated on Morgan Street, near the intersection of Hall Avenue for this monitoring event. As mentioned previously, when the contractor advanced the test pit at SA-4, HES deployed two additional CAMP stations to monitor the test pit activities at SA-4 and the SA-11 excavation activities at the same time. After the test pit activities at SA-4 were completed and the hole backfilled and covered, the two additional CAMP stations were shut down. The onsite monitoring stations were repositioned as needed based on the excavation areas where the contractor was working.

Details of the CAMP monitoring procedures and the monitoring equipment used to conduct the CAMP are included in previous data summary memoranda.

Water and vapor/odor suppressant foam are available on-site in the event there is a release of dust or VOCs from site activities. On Thursday March 09, 2017, neither water nor foam were required for odors or vapors emanating from the excavation areas. There were no noticeable visible dusts released from the work activities during this monitoring event. However, the activities of the trucks going in and out of the southern gate cause the soil in this area to dry out in the afternoon. The contractor used their water trailer to wet this area down. There were no noticeable gasoline or fuel odors in the area of the fuel tanks that were encountered on the previous day. The tanks remained covered with plastic sheeting.

A NYSDEC representative was on site on Thursday March 09, 2017 to observe the excavation activities, backfilling activities, and monitoring activities in and around the work areas. The excavation areas were covered with plastic at the end of the day. During this monitoring event there were no exceedances of the CAMP alert triggers at any of the five operating CAMP stations during site activities. None of the dust or VOC concentrations approached the action levels requiring a work stoppage or corrective measures.

It was noted that the additional upwind CAMP station (Sta. #6) registered an elevated dust concentration the first minute it was started up at 10:02 am which caused a 15-min average of 0.320 mg/m³. At the time of the elevated reading, Station #6 was positioned south of the SA-4 area where the contractor was going to advance an exploratory test pit. This location was downwind of the work activities at SA-11; however, the two downwind

stations closer to the SA-11 area did not register elevated Dust readings at this same time. This elevated reading was likely caused by the start up procedures for the CAMP station and not representative of Dust concentrations at this interval; subsequent 1-minute readings at Sta. #6 were well below 0.100 mg/m³ and were back down to typical dust concentrations that were observed on this day and during prior site work. Test pit activities at SA-4 had not yet started when this reading was registered. See the table below showing the 1-minute concentrations around the time of the registered elevated concentration.

TA00134405: Station #6 (Add'l Upwind Location)		
Date / Time	1-Minute Reading	15-Minute
	(mg/m³)	Average (mg/m³)
3/9/2017 10:02	0.32	0.32
3/9/2017 10:03	0.007	0.1635
3/9/2017 10:04	0.009	0.112
3/9/2017 10:05	0.076	0.103
3/9/2017 10:06	0.007	0.0838
3/9/2017 10:07	0.004	0.0705
3/9/2017 10:08	0.002	0.0607
3/9/2017 10:09	0.002	0.0534
3/9/2017 10:10	0.003	0.0478
3/9/2017 10:11	0.003	0.0433
3/9/2017 10:12	0.003	0.0396
3/9/2017 10:13	0.003	0.0366
3/9/2017 10:14	0.002	0.0339
3/9/2017 10:15	0.003	0.0317
3/9/2017 10:16	0.002	0.0297
3/9/2017 10:17	0.002	0.0085
3/9/2017 10:18	0.006	0.0085
3/9/2017 10:19	0.005	0.0082

Currently there are three full 20-yd roll-offs and one partially filled roll-off containing the source materials from the SA-3 excavation (antiperspirant spray cans and jars of antiperspirant cream). The roll-offs are covered with vinyl covers secured in place with elastic tie-down cords; the contractor is waiting for direction and approval from their disposal facilities for the proper disposal of this source material.

Below is a summary table for the 03/09/2017 CAMP monitoring event.

Date: 03/09/17

CAMP Data	Upwind (Sta. 3)	Downwind (Sta. 1)	Downwind (Sta. 4)	Buildings (Sta. 2A)	Morgan Str. (Sta. 5)
VOCs (ppm)					
Min. 15-min. Ave.	0.00	0.00	0.00	0.02	0.00
Max. 15-min. Ave.	0.00	0.04	0.18	0.07	0.13
Overall Ave.	0.00	0.01	0.08	0.05	0.00
Dust (mg/m³)					
Min. 15-min. Ave.	0.0000	0.0002	0.0075	0.0000	0.0012
Max. 15-min. Ave.	0.0168	0.0431	0.0671	0.0177	0.0111
Overall Ave.	0.0039	0.0083	0.0189	0.0028	0.0030

Date: 03/09/17

CAMP Data	Add'l Upwind (Sta. 6)	Add'l Downwind (Sta. 7)
VOCs (ppm)		
Min. 15-min. Ave.	0.00	0.00
Max. 15-min. Ave.	0.11	0.33
Overall Ave.	0.04	0.20
Dust (mg/m³)		
Min. 15-min. Ave.	0.0001	0.0000
Max. 15-min. Ave.	0.3200	0.0257
Overall Ave.	0.0099	0.0048

EnviroNet CAMP Data Summary Graphs



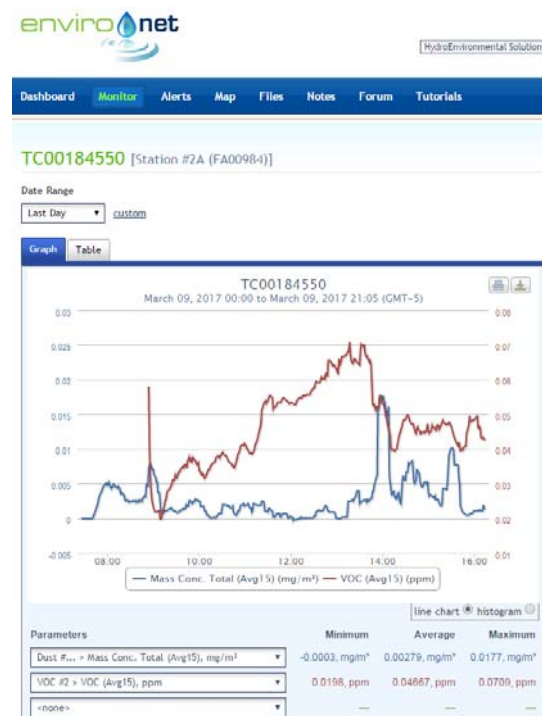
03/09/17 - Station #3 (Upwind)



03/09/17 - Station #1 (Downwind)



03/09/17 - Station #4 (Downwind)



03/09/17 - Station #2A (Near Buildings)

Marbledale Road BCP Site
Summary of CAMP Results (03/09/17)
March 10, 2017

Page 6



03/09/17 - Station #5 (Morgan Street)



03/09/17 - Station #6 (Add'l Upwind – Short Duration)



03/09/17 - Station #7 (Add'l Downwind – Short Duration)



Memo

Date: March 13, 2017

Project: BCP Site # C360143

To: Village of Tuckahoe

From: John Guzewich, HDR

Subject: Summary of CAMP Results During Site Work
109-125 Marbledale Road
Tuckahoe, New York
March 10, 2017

This memorandum was prepared by HDR to provide a review of the Community Air Monitoring Plan (CAMP) implementation during Friday March 10, 2017 site work. The remediation contractor continued excavation activities in Source Area 11 (SA-11) which is also referred to as the SB-1 area. The excavation activities at SA-11 were completed; this area is going to be a temporary water detention basin during construction activities. Therefore this area is not going to be backfilled; the excavation area was covered and fenced at the end of the day. On this day HES deployed one set of CAMP stations to monitor work being conducted by the contractor. A total of 8 trucks of soil were loaded and sent off site for disposal on March 09, 2017; the last truck was loaded out at 1045. All crews were off-site by 1300.

An HDR representative was on site to observe site activities on this day. It was confirmed that the CAMP monitoring stations were appropriately re-positioned as needed during the course of the day to account for the above-described work and locations of intrusive work. When a given source area was completed or not being worked on, it was covered and monitored periodically with the hand-held air monitoring instruments that are employed in and around the active work areas.

There were no NYSDEC “off-site” work activities on this day.

DATA EVALUATION AND INTERPRETATIONS

In accordance with the RAWP, a CAMP is required during site activities involving soil disturbance activities. HES conducted CAMP monitoring during soil excavation, and truck loading activities associated with the SA-11 area on this day. In accordance with the RAWP, four monitoring stations (upwind, two downwind, and a location between the work area and the nearest occupied building) are to be set up on-site to collect particulate (Dust) and volatile organic compound (VOC) measurements. In addition, HES has a 5th CAMP monitoring station off-site between the site and the Waverly Early Childhood Center. The CAMP station was situated on Morgan Street, near the intersection of Hall

Avenue for this monitoring event. The onsite monitoring stations were repositioned as needed based on the excavation areas where the contractor was working.

Details of the CAMP monitoring procedures and the monitoring equipment used to conduct the CAMP are included in previous data summary memoranda.

Water and vapor/odor suppressant foam are available on-site in the event there is a release of dust or VOCs from site activities. On Friday March 10, 2017, neither water nor foam were required for odors or vapors emanating from the excavation areas. There were no noticeable visible dusts released from the work activities during this monitoring event. There were no noticeable gasoline or fuel odors in the area of the fuel tanks that were encountered earlier in the week. The tanks remained covered with plastic sheeting.

An HDR representative was on site on Friday March 10, 2017 to observe the excavation activities, backfilling activities, and monitoring activities in and around the work areas. The excavation areas were covered with plastic at the end of the day. During this monitoring event there were no exceedances of the CAMP alert triggers at any of the five operating CAMP stations during site activities. None of the dust or VOC concentrations approached the action levels requiring a work stoppage or corrective measures.

Currently there are three full 20-yd roll-offs and one partially filled roll-off containing the source materials from the SA-3 excavation (antiperspirant spray cans and jars of antiperspirant cream). The roll-offs are covered with vinyl covers secured in place with elastic tie-down cords; the contractor is waiting for direction and approval from their disposal facilities for the proper disposal of this source material.

Below is a summary table for the 03/10/2017 CAMP monitoring event.

Date: 03/10/17

CAMP Data	Upwind (Sta. 3)	Downwind (Sta. 1)	Downwind (Sta. 4)	Buildings (Sta. 2)	Morgan Str. (Sta. 5)
VOCs (ppm)					
Min. 15-min. Ave.	0.00	0.00	0.00	0.00	0.00
Max. 15-min. Ave.	0.00	0.10	0.06	0.03	0.01
Overall Ave.	0.00	0.02	0.03	0.00	0.01
Dust (mg/m³)					
Min. 15-min. Ave.	0.0000	0.0000	0.0000	0.0000	0.0000
Max. 15-min. Ave.	0.0046	0.0366	0.0151	0.0326	0.0085
Overall Ave.	0.0014	0.0096	0.0087	0.0046	0.0055

Environet CAMP Data Summary Graphs



03/10/17 - Station #3 (Upwind)



03/10/17 - Station #1 (Downwind)



03/10/17 - Station #4 (Downwind)



03/10/17 - Station #2 (Near Buildings)

Marbledale Road BCP Site
Summary of CAMP Results (03/10/17)
March 13, 2017

Page 5



03/10/17 - Station #5 (Morgan Street)



Memo

Date: March 23, 2017

Project: BCP Site # C360143

To: Village of Tuckahoe

From: John Guzewich, HDR

Subject: Summary of CAMP Results During Site Work
109-125 Marbledale Road
Tuckahoe, New York
March 22, 2017

This memorandum was prepared by HDR to provide a review of the Community Air Monitoring Plan (CAMP) implementation during Wednesday March 22, 2017 site work. The remediation contractor was excavating in the northeast area of the site for the installation of the temporary sediment basin. The excavation activities for the basin were completed and the excavation area was lined with geotextile fabric. The contractor also stockpiled the soils removed from the basin area and secured the stockpiled soil with plastic sheeting. Soil removed from the excavation will be used for site grading activities. The contractor inspected the areas of the site covered with plastic and re-secured the plastic sheeting where required.

A NYSDEC representative was on site to observe site activities on this day. It was confirmed that the CAMP monitoring stations were appropriately re-positioned as needed during the course of the day to account for the above-described work and locations of intrusive work.

There were no NYSDEC “off-site” work activities on this day.

DATA EVALUATION AND INTERPRETATIONS

In accordance with the RAWP, a CAMP is required during site activities involving soil disturbance activities. HES conducted CAMP monitoring during soil excavation activities associated with detention basin in the northeast area of the site. In accordance with the RAWP, four monitoring stations (upwind, two downwind, and a location between the work area and the nearest occupied building) are to be set up on-site to collect particulate (Dust) and volatile organic compound (VOC) measurements. In addition, HES has a 5th CAMP monitoring station off-site between the site and the Waverly Early Childhood Center. The CAMP station was situated on Morgan Street, near the intersection of Bellevue Avenue for this monitoring event. The onsite monitoring stations were repositioned as needed based on the excavation area where the contractor was working.

Details of the CAMP monitoring procedures and the monitoring equipment used to conduct the CAMP are included in previous data summary memoranda.

Water and vapor/odor suppressant foam are available on-site in the event there is a release of dust or VOCs from site activities. On Wednesday March 22, 2017, neither water nor foam were required for odors or vapors emanating from the excavation areas. There were no noticeable visible dusts released from the work activities during this monitoring event. However, the work activities in the northern portion of the site caused the some of the surface soils in this area to dry out; the contractor used their water trailer to wet these areas down.

A NYSDEC representative was on site on Wednesday March 22, 2017 to observe the excavation and stockpiling activities, and monitoring activities in and around the work area. The area excavated on this day is a temporary sediment detention basin and it was lined with a geotextile fabric. During this monitoring event there were no exceedances of the CAMP alert triggers at any of the five operating CAMP stations during site excavation activities. None of the dust or VOC concentrations approached the action levels requiring a work stoppage or corrective measures due to soil disturbance activities.

Excavation activities for the basin began at about 9:30 am. After discussions concerning the limits of the excavation between the contractor, NYSDEC, and HES, it was determined that that limit of the excavation was going to be within 20 ft of the property fence. The contractor halted the excavation activities at 9:40 am and implemented the procedures required for working within 20 ft of a property line. The contractor attached geo-textile fabric to the fence and placed traffic barricades along Marbledale Road to restrict the public from getting too close to the fence. One of the downwind CAMP stations (Station #1) was repositioned on the outside of the fence along Marbledale Road.

When the contractor was attaching the fabric to the fence, a section of the geotextile fabric was inadvertently draped over the CAMP station. This caused Sta. #1 to register an elevated dust concentration of 2.82 mg/m^3 during a 1-min interval at 10:26 am which caused a maximum 15-min average of 0.1969 mg/m^3 for this interval. There were no excavation activities at this time; excavation activities for the detention basin resumed at 12:30 pm. This 15-min CAMP exceedance was not attributed to site activities or blowing dust at the site. Dust concentrations before and after this elevated 1-minute reading at this CAMP station and the other CAMP stations were well below 0.100 mg/m^3 and were at typical dust concentrations observed on this day and during prior site work when the geotextile fabric was removed from the CAMP station. See the table below showing the 1-minute concentrations around the time of the registered elevated concentration.

TB00864127: Station #1 (Downwind Location)		
Date / Time	1-Minute Reading (mg/m³)	15-Minute Average (mg/m³)
3/22/2017 10:19	0.005	0.0056
3/22/2017 10:20	0.005	0.0056
3/22/2017 10:21	0.007	0.0057
3/22/2017 10:22	0.005	0.0057
3/22/2017 10:23	0.005	0.0056
3/22/2017 10:24	0.005	0.0056
3/22/2017 10:25	0.005	0.0055
3/22/2017 10:26	2.82	0.1932
3/22/2017 10:27	0.005	0.1931
3/22/2017 10:28	0.005	0.1931
3/22/2017 10:29	0.028	0.1945
3/22/2017 10:30	0.005	0.1943
3/22/2017 10:31	0.006	0.1944
3/22/2017 10:32	0.025	0.1957
3/22/2017 10:33	0.006	0.1958
3/22/2017 10:34	0.006	0.1959
3/22/2017 10:35	0.006	0.1959
3/22/2017 10:36	0.006	0.1959
3/22/2017 10:37	0.007	0.196
3/22/2017 10:38	0.005	0.196
3/22/2017 10:39	0.018	0.1969
3/22/2017 10:40	0.005	0.1969
3/22/2017 10:41	0.006	0.0093

There were windy conditions on this day and on several occasions dust was observed blowing around on the site from the ground surface (not from excavation activities). The contractor wetted down these areas to minimize the dust from blowing around the site on this day.

Currently there are three full 20-yd roll-offs and one partially filled roll-off containing the source materials from the SA-3 excavation (antiperspirant spray cans and jars of antiperspirant cream). The roll-offs are covered with vinyl covers secured in place with elastic tie-down cords; the contractor is waiting for direction and approval from their disposal facilities for the proper disposal of this source material.

The fuel tanks encountered in the SA-1 excavation area on March 06, 2017 remain covered with plastic; there were no reported noticeable fuel or gasoline odors in this area. The contractor is arranging for a tank removal company to remove and properly dispose of the two fuel tanks.

Below is a summary table for the 03/22/2017 CAMP monitoring event.

Date: 03/22/17

CAMP Data	Upwind (Sta. 3)	Downwind (Sta. 1)	Downwind (Sta. 8)	Buildings (Sta. 2)	Morgan Str. (Sta. 5)
VOCs (ppm)					
Min. 15-min. Ave.	0.00	0.00	0.00	0.00	0.00
Max. 15-min. Ave.	0.00	0.00	0.06	0.05	0.03
Overall Ave.	0.00	0.01	0.01	0.01	0.00
Dust (mg/m³)					
Min. 15-min. Ave.	0.0001	0.0039	0.0012	0.0000	0.0039
Max. 15-min. Ave.	0.0220	0.1969 *	0.0388	0.0456	0.0096
Overall Ave.	0.0012	0.0129	0.0129	0.0084	0.0054

* This 15-min dust exceedance was not caused by soil disturbance activities.

Environet CAMP Data Summary Graphs



03/22/17 - Station #3 (Upwind)



03/22/17 - Station #1 (Downwind)



03/22/17 - Station #8 (Downwind)



03/22/17 - Station #2 (Near Buildings)

Marbledale Road BCP Site
Summary of CAMP Results (03/22/17)
March 23, 2017

Page 6



03/22/17 - Station #5 (Morgan Street)



Memo

Date: March 24, 2017

Project: BCP Site # C360143

To: Village of Tuckahoe

From: John Guzewich, HDR

Subject: Summary of CAMP Results During Site Work
109-125 Marbledale Road
Tuckahoe, New York
March 23, 2017

This memorandum was prepared by HDR to provide a review of the Community Air Monitoring Plan (CAMP) implementation during Thursday March 23, 2017 site work. The remediation contractor was excavating in the northwest area of the site where a below-grade stormwater retention structure is going to be installed. The excavation activities for the basin were not completed; the excavation area was covered with plastic and barricaded with construction fencing. The contractor also stockpiled the soils removed from the basin area and secured the stockpiled soil with plastic sheeting. Soil removed from the excavation area will be used for site grading activities. The contractor inspected the areas of the site covered with plastic and re-secured the plastic sheeting where required.

A NYSDEC representative was on site to observe site activities on this day. It was confirmed that the CAMP monitoring stations were appropriately re-positioned as needed during the course of the day to account for the above-described work and locations of intrusive work.

There were no NYSDEC “off-site” work activities on this day.

DATA EVALUATION AND INTERPRETATIONS

In accordance with the RAWP, a CAMP is required during site activities involving soil disturbance activities. HES conducted CAMP monitoring during soil excavation activities associated with detention basin in the northeast area of the site. In accordance with the RAWP, four monitoring stations (upwind, two downwind, and a location between the work area and the nearest occupied building) are to be set up on-site to collect particulate (Dust) and volatile organic compound (VOC) measurements. In addition, HES has a 5th CAMP monitoring station off-site between the site and the Waverly Early Childhood Center. The CAMP station was situated on Morgan Street, near the intersection of Bellevue Avenue for this monitoring event. The onsite monitoring stations were repositioned as needed based on the excavation area where the contractor was working.

Details of the CAMP monitoring procedures and the monitoring equipment used to conduct the CAMP are included in previous data summary memoranda.

Water and vapor/odor suppressant foam are available on-site in the event there is a release of dust or VOCs from site activities. On Thursday March 23, 2017, neither water nor foam were required for odors or vapors emanating from the excavation areas. However, site equipment running around the work area was causing some visible dust to get released into the air from the ground. The contractor had two excavators operating as well as an on-site dump truck moving soil from the excavation area to the stockpile area along with several support vehicles. Twice during the monitoring event, excavation and hauling activities were halted by the contractor and the watering trailer was used to water down the area to minimize the dust being released.

A NYSDEC representative was on site on Thursday March 23, 2017 to observe the excavation and stockpiling activities, and monitoring activities in and around the work area. The area excavated on this day is a location where a below-grade stormwater storage structure is going to be installed. During this monitoring event there were no exceedances of the CAMP alert triggers at any of the five operating CAMP stations during site excavation activities. None of the dust or VOC concentrations approached the action levels requiring a work stoppage or corrective measures due to soil disturbance activities.

Currently there are three full 20-yd roll-offs and one partially filled roll-off containing the source materials from the SA-3 excavation (antiperspirant spray cans and jars of antiperspirant cream). The roll-offs are covered with vinyl covers secured in place with elastic tie-down cords; the contractor is waiting for direction and approval from their disposal facilities for the proper disposal of this source material.

The fuel tanks encountered in the SA-1 excavation area on March 06, 2017 remain covered with plastic; there were no reported noticeable fuel or gasoline odors in this area. The contractor is arranging for a tank removal company to remove and properly dispose of the two fuel tanks.

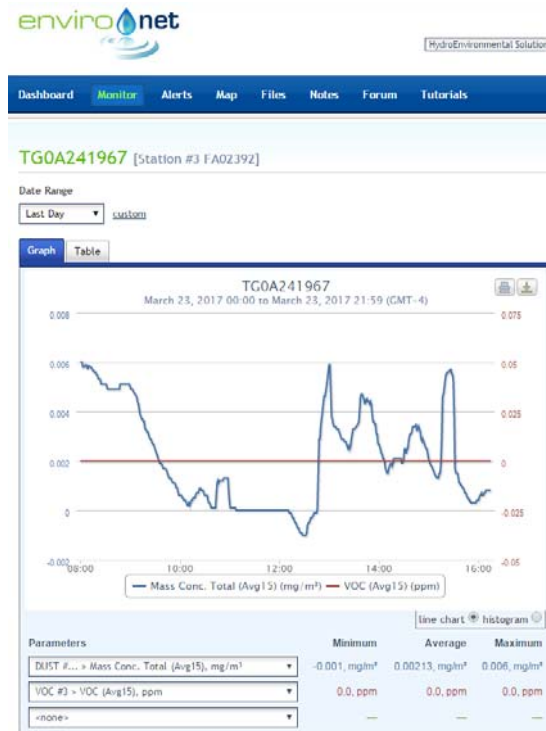
Below is a summary table for the 03/23/2017 CAMP monitoring event.

Date: 03/23/17

CAMP Data	Upwind (Sta. 3)	Downwind (Sta. 1)	Downwind (Sta. 4)	Buildings (Sta. 2)	Morgan Str. (Sta. 5) *
VOCs (ppm)					
Min. 15-min. Ave.	0.00	0.00	0.00	0.00	0.00
Max. 15-min. Ave.	0.00	0.01	0.02	0.07	0.07
Overall Ave.	0.00	0.00	0.00	0.05	0.00
Dust (mg/m³)					
Min. 15-min. Ave.	0.0000	0.0021	0.0083	0.0000	0.0019
Max. 15-min. Ave.	0.0060	0.0536	0.0223	0.0098	0.0187
Overall Ave.	0.0021	0.0144	0.0110	0.0026	0.0046

* The off-site station (Station #5) stopped reporting dust concentrations almost immediately after it was started up and HES was not able to make it operational until 1230 pm when they were able to get up to the monitoring station to get the dust monitor to communicate with the modem.

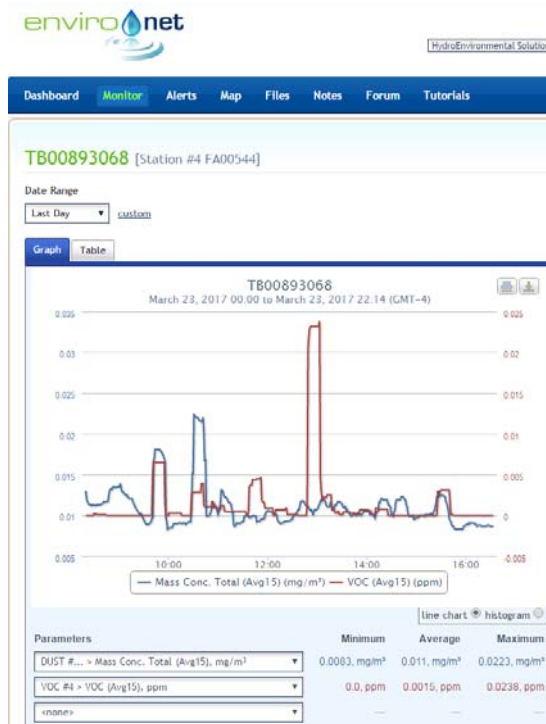
Environet CAMP Data Summary Graphs



03/23/17 - Station #3 (Upwind)



03/23/17 - Station #1 (Downwind)



03/23/17 - Station #4 (Downwind)



03/23/17 - Station #2 (Near Buildings)

Marbledale Road BCP Site
Summary of CAMP Results (03/23/17)
March 24, 2017

Page 5



03/23/17 - Station #5 (Morgan Street)



Memo

Date: March 27, 2017

Project: BCP Site # C360143

To: Village of Tuckahoe

From: John Guzewich, HDR

Subject: Summary of CAMP Results During Site Work
109-125 Marbledale Road
Tuckahoe, New York
March 24, 2017

This memorandum was prepared by HDR to provide a review of the Community Air Monitoring Plan (CAMP) implementation during Friday March 24, 2017 site work. The remediation contractor was excavating in the northwest area of the site where a below-grade stormwater retention structure is going to be installed. The excavation activities for the basin were not completed; the excavation area was covered with plastic and barricaded with construction fencing. The contractor also stockpiled the soils removed from the basin area and secured the stockpiled soil with plastic sheeting. Soil removed from the excavation area will be used for site grading activities. The contractor inspected the areas of the site covered with plastic and re-secured the plastic sheeting where required.

An HDR representative was on site to observe site activities on this day. It was confirmed that the CAMP monitoring stations were appropriately re-positioned as needed during the course of the day to account for the above-described work and locations of intrusive work.

There were no NYSDEC “off-site” work activities on this day.

DATA EVALUATION AND INTERPRETATIONS

In accordance with the RAWP, a CAMP is required during site activities involving soil disturbance activities. HES conducted CAMP monitoring during soil excavation activities associated with detention basin in the northeast area of the site. In accordance with the RAWP, four monitoring stations (upwind, two downwind, and a location between the work area and the nearest occupied building) are to be set up on-site to collect particulate (Dust) and volatile organic compound (VOC) measurements. In addition, HES has a 5th CAMP monitoring station off-site between the site and the Waverly Early Childhood Center. The CAMP station was situated on Morgan Street, near the intersection of Bellevue Avenue for this monitoring event. The onsite monitoring stations were repositioned as needed based on the excavation area where the contractor was working.

Details of the CAMP monitoring procedures and the monitoring equipment used to conduct the CAMP are included in previous data summary memoranda.

Water and vapor/odor suppressant foam are available on-site in the event there is a release of dust or VOCs from site activities. On Friday March 24, 2017, neither water nor foam were required for odors or vapors emanating from the excavation areas. However, site equipment running around the work area was causing some visible dust to be released into the air from the ground. The contractor had two excavators operating as well as an on-site dump truck moving soil from the excavation area to the stockpile area along with several support vehicles. Twice during the monitoring event, excavation and hauling activities were halted by the contractor and the watering trailer was used to water down the area to minimize the dust being released.

An HDR representative was on site on Friday March 24, 2017 to observe the excavation and stockpiling activities, and monitoring activities in and around the work area. The area excavated on this day is a location where a below-grade stormwater storage structure is going to be installed. During this monitoring event there were no exceedances of the CAMP alert triggers at any of the five operating CAMP stations during site excavation activities. None of the dust or VOC concentrations approached the action levels requiring a work stoppage or corrective measures due to soil disturbance activities.

Currently there are three full 20-yd roll-offs and one partially filled roll-off containing the source materials from the SA-3 excavation (antiperspirant spray cans and jars of antiperspirant cream). The roll-offs are covered with vinyl covers secured in place with elastic tie-down cords; the contractor is waiting for direction and approval from their disposal facilities for the proper disposal of this source material.

The fuel tanks encountered in the SA-1 excavation area on March 06, 2017 remain covered with plastic; there were no reported noticeable fuel or gasoline odors in this area. The contractor is arranging for a tank removal company to remove and properly dispose of the two fuel tanks.

Below is a summary table for the 03/24/2017 CAMP monitoring event.

Date: 03/24/17

CAMP Data	Upwind (Sta. 3)	Downwind (Sta. 1)	Downwind (Sta. 4)	Buildings (Sta. 2)	Morgan Str. (Sta. 5)
VOCs (ppm)					
Min. 15-min. Ave.	0.00	0.00	0.00	0.00	0.00
Max. 15-min. Ave.	0.00	0.01	0.03	0.04	0.09
Overall Ave.	0.00	0.00	0.01	0.01	0.05
Dust (mg/m³)					
Min. 15-min. Ave.	0.0066	0.0000	0.0000	0.0176	0.0181
Max. 15-min. Ave.	0.0370	0.0987	0.0298	0.0355	0.0311
Overall Ave.	0.0155	0.0497	0.0259	0.0255	0.0235

EnviroNet CAMP Data Summary Graphs



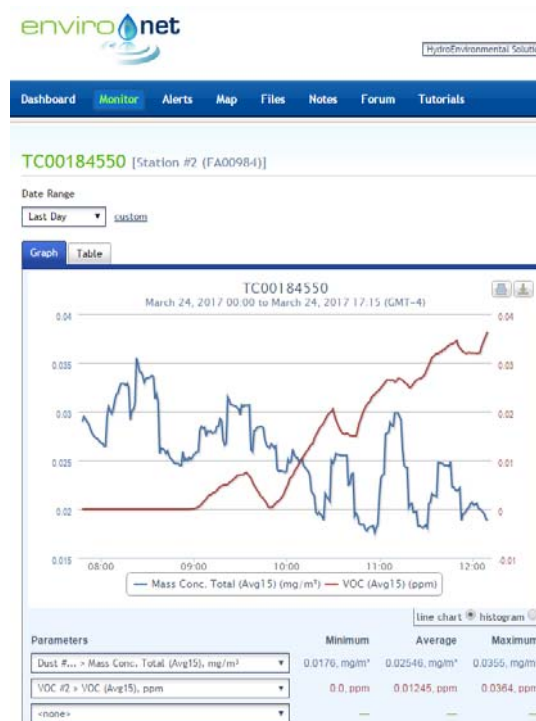
03/24/17 - Station #3 (Upwind)



03/24/17 - Station #1 (Downwind)



03/24/17 - Station #4 (Downwind)



03/24/17 - Station #2 (Near Buildings)

Marbledale Road BCP Site
Summary of CAMP Results (03/24/17)
March 27, 2017

Page 5



03/24/17 - Station #5 (Morgan Street)



Memo

Date: March 28, 2017

Project: BCP Site # C360143

To: Village of Tuckahoe

From: John Guzewich, HDR

Subject: Summary of CAMP Results During Site Work
109-125 Marbledale Road
Tuckahoe, New York
March 27, 2017

This memorandum was prepared by HDR to provide a review of the Community Air Monitoring Plan (CAMP) implementation during Monday March 27, 2017 site work. The remediation contractor was excavating in the northwest area of the site where a below-grade stormwater retention structure is going to be installed. The excavation activities for the basin were completed; the excavation area was lined with plastic and barricaded with construction fencing. The contractor also stockpiled the soils removed from the basin area and secured the stockpiled soil with plastic sheeting. Soil removed from the excavation area will be used for site grading activities. The contractor inspected the areas of the site covered with plastic and re-secured the plastic sheeting where required.

An HDR representative was on site to observe site activities on this day. It was confirmed that the CAMP monitoring stations were appropriately re-positioned as needed during the course of the day to account for the above-described work and locations of intrusive work.

There were no NYSDEC “off-site” work activities on this day.

DATA EVALUATION AND INTERPRETATIONS

In accordance with the RAWP, a CAMP is required during site activities involving soil disturbance activities. HES conducted CAMP monitoring during soil excavation activities associated with detention basin in the northeast area of the site. In accordance with the RAWP, four monitoring stations (upwind, two downwind, and a location between the work area and the nearest occupied building) are to be set up on-site to collect particulate (Dust) and volatile organic compound (VOC) measurements. In addition, HES has a 5th CAMP monitoring station off-site between the site and the Waverly Early Childhood Center. The CAMP station was situated on Morgan Street, near the intersection of Bellew Avenue for this monitoring event. The onsite monitoring stations were repositioned as needed based on the excavation area where the contractor was working.

Details of the CAMP monitoring procedures and the monitoring equipment used to conduct the CAMP are included in previous data summary memoranda.

Water and vapor/odor suppressant foam are available on-site in the event there is a release of dust or VOCs from site activities. On Monday March 27, 2017, neither water nor foam were required for odors or vapors emanating from the excavation areas. Rainy conditions today kept all dust down at the site.

An HDR representative was on site on Monday March 27, 2017 to observe the excavation and stockpiling activities, and monitoring activities in and around the work area. The area excavated on this day is a location where a below-grade stormwater storage structure is going to be installed. During this monitoring event there were no exceedances of the CAMP alert triggers at any of the five operating CAMP stations during site excavation activities. None of the dust or VOC concentrations approached the action levels requiring a work stoppage or corrective measures due to soil disturbance activities.

Currently there are three full 20-yd roll-offs and one partially filled roll-off containing the source materials from the SA-3 excavation (antiperspirant spray cans and jars of antiperspirant cream). The roll-offs are covered with vinyl covers secured in place with elastic tie-down cords; the contractor is waiting for direction and approval from their disposal facilities for the proper disposal of this source material.

The fuel tanks encountered in the SA-1 excavation area on March 06, 2017 remain covered with plastic; there were no reported noticeable fuel or gasoline odors in this area. The contractor is arranging for a tank removal company to remove and properly dispose of the two fuel tanks.

Below is a summary table for the 03/27/2017 CAMP monitoring event.

Date: 03/27/17

CAMP Data	Upwind (Sta. 3)	Downwind (Sta. 1)	Downwind (Sta. 4)	Buildings (Sta. 2)	Morgan Str. (Sta. 5)
VOCs (ppm)					
Min. 15-min. Ave.	0.00	0.00	0.00	0.00	0.00
Max. 15-min. Ave.	0.00	0.07	0.03	0.12	0.08
Overall Ave.	0.00	0.03	0.00	0.05	0.03
Dust (mg/m³)					
Min. 15-min. Ave.	0.0000	0.0053	0.0085	0.0057	0.0000
Max. 15-min. Ave.	0.0391	0.1047	0.0461	0.0411	0.0000
Overall Ave.	0.0120	0.0286	0.0207	0.0159	0.0000

Environet CAMP Data Summary Graphs



03/27/17 - Station #3 (Upwind)



03/27/17 - Station #1 (Downwind)



03/27/17 - Station #4 (Downwind)



03/27/17 - Station #2 (Near Buildings)

Marbledale Road BCP Site
Summary of CAMP Results (03/27/17)
March 28, 2017

Page 5



03/27/17 - Station #5 (Morgan Street)



Memo

Date: March 28, 2017

Project: BCP Site # C360143

To: Village of Tuckahoe

From: John Guzewich, HDR

Subject: Summary of CAMP Results During Site Work
109-125 Marbledale Road
Tuckahoe, New York
March 28, 2017

This memorandum was prepared by HDR to provide a review of the Community Air Monitoring Plan (CAMP) implementation during Tuesday March 28, 2017 site work. The remediation contractor was conducting some preparatory soil removal and grading activities in the area of SA-2 where additional soil excavation and disposal is required. The contractor re-secured the plastic sheeting in areas where required.

A NYSDEC representative was on site to observe site activities on this day. It was confirmed that the CAMP monitoring stations were appropriately re-positioned as needed during the course of the day to account for the above-described work and locations of intrusive work.

There were no NYSDEC “off-site” work activities on this day.

DATA EVALUATION AND INTERPRETATIONS

In accordance with the RAWP, a CAMP is required during site activities involving soil disturbance activities. HES conducted CAMP monitoring during soil excavation activities associated with detention basin in the northeast area of the site. In accordance with the RAWP, four monitoring stations (upwind, two downwind, and a location between the work area and the nearest occupied building) are to be set up on-site to collect particulate (Dust) and volatile organic compound (VOC) measurements. In addition, HES has a 5th CAMP monitoring station off-site between the site and the Waverly Early Childhood Center. The CAMP station was situated on Morgan Street, near the intersection of Bellevue Avenue for this monitoring event. The onsite monitoring stations were repositioned as needed based on the excavation area where the contractor was working.

Details of the CAMP monitoring procedures and the monitoring equipment used to conduct the CAMP are included in previous data summary memoranda.

Water and vapor/odor suppressant foam are available on-site in the event there is a release of dust or VOCs from site activities. On Tuesday March 28, 2017, neither water nor foam were required for odors or vapors emanating from the excavation areas. Rainy conditions today kept all dust down at the site.

A NYSDEC representative was on site on Tuesday March 28, 2017 to observe the soil preparation and grading activities in the area of SA-2, and monitoring activities in and around the work area. During this monitoring event there were no exceedances of the CAMP alert triggers at any of the five operating CAMP stations during site excavation activities. None of the dust or VOC concentrations approached the action levels requiring a work stoppage or corrective measures due to soil disturbance activities.

Currently there are three full 20-yd roll-offs and one partially filled roll-off containing the source materials from the SA-3 excavation (antiperspirant spray cans and jars of antiperspirant cream). The roll-offs are covered with vinyl covers secured in place with elastic tie-down cords; the contractor is waiting for direction and approval from their disposal facilities for the proper disposal of this source material.

The fuel tanks encountered in the SA-1 excavation area on March 06, 2017 remain covered with plastic; there were no reported noticeable fuel or gasoline odors in this area. The contractor is arranging for a tank removal company to remove and properly dispose of the two fuel tanks.

Below is a summary table for the 03/28/2017 CAMP monitoring event.

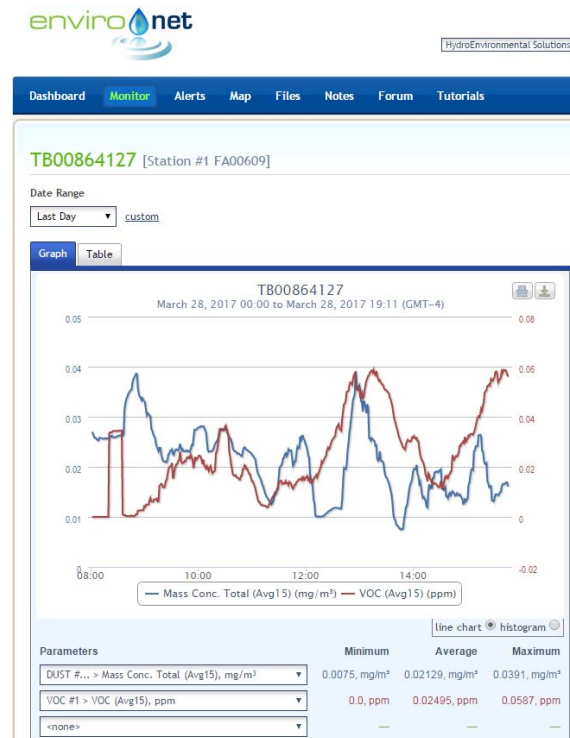
Date: 03/28/17

CAMP Data	Upwind (Sta. 8)	Downwind (Sta. 1)	Downwind (Sta. 4)	Buildings (Sta. 2)	Morgan Str. (Sta. 5)
VOCs (ppm)					
Min. 15-min. Ave.	0.00	0.00	0.00	0.00	0.00
Max. 15-min. Ave.	0.19	0.06	0.01	0.08	0.07
Overall Ave.	0.05	0.02	0.00	0.06	0.03
Dust (mg/m³)					
Min. 15-min. Ave.	0.0049	0.0075	0.0119	0.0058	0.0065
Max. 15-min. Ave.	0.0321	0.0391	0.0661	0.0343	0.0273
Overall Ave.	0.0169	0.0213	0.0288	0.0177	0.0153

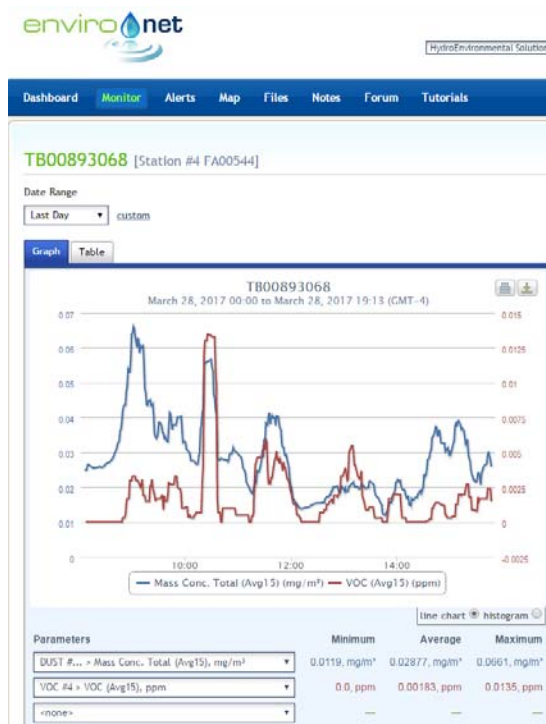
Environet CAMP Data Summary Graphs



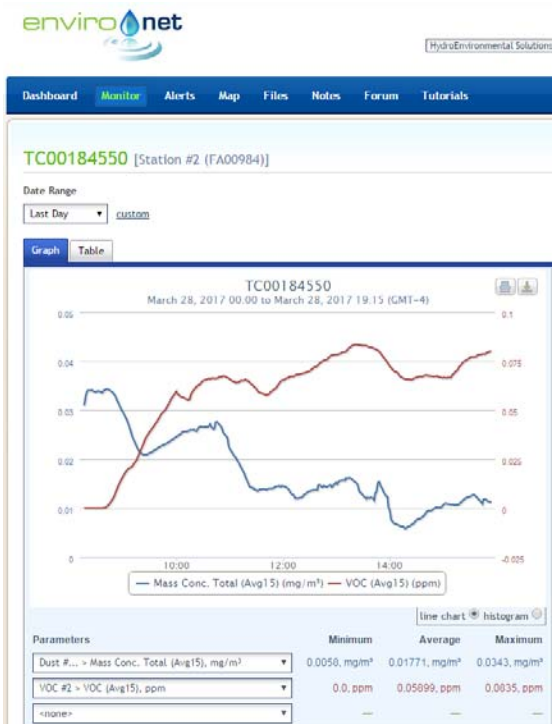
03/28/17 - Station #8 (Upwind)



03/28/17 - Station #1 (Downwind)



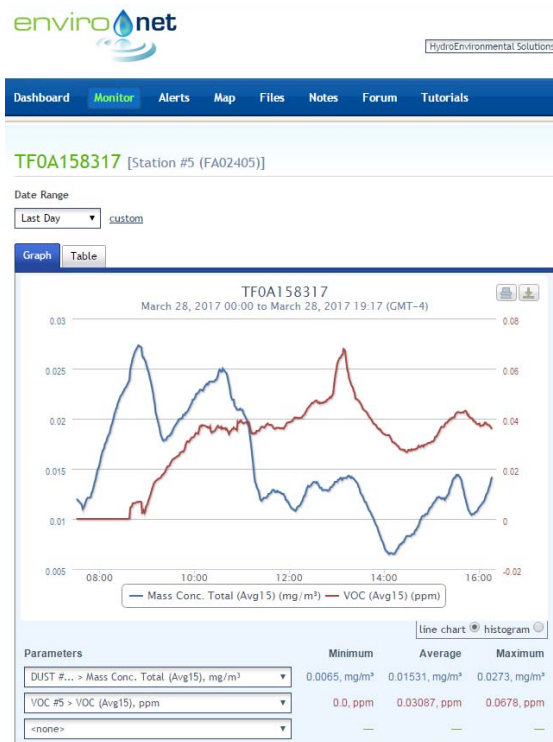
03/28/17 - Station #4 (Downwind)



03/28/17 - Station #2 (Near Buildings)

Marbledale Road BCP Site
Summary of CAMP Results (03/28/17)
March 28, 2017

Page 4



03/28/17 - Station #5 (Morgan Street)



Memo

Date: March 30, 2017

Project: BCP Site # C360143

To: Village of Tuckahoe

From: John Guzewich, HDR

Subject: Summary of CAMP Results During Site Work
109-125 Marbledale Road
Tuckahoe, New York
March 29, 2017

This memorandum was prepared by HDR to provide a review of the Community Air Monitoring Plan (CAMP) implementation during Wednesday March 29, 2017 site work. On this day HES deployed two sets of CAMP stations (one additional upwind station and two additional downwind stations) so that they would be able to effectively monitor work being conducted by the contractor at the north area of the site and south area of the site simultaneously. The remediation contractor was conducting some concrete removal work in the northern area of the site (concrete loaded onto trucks and removed from the site) and some preparatory soil removal and grading activities in the area of the hotel slab area. The contractor re-secured the plastic sheeting in areas where required.

A NYSDEC representative was on site to observe site activities on this day. It was confirmed that the CAMP monitoring stations were appropriately re-positioned as needed during the course of the day to account for the above-described work and locations of intrusive work.

There were no NYSDEC “off-site” work activities on this day.

DATA EVALUATION AND INTERPRETATIONS

In accordance with the RAWP, a CAMP is required during site activities involving soil disturbance activities. As noted previously, the contractor was planning to conduct soil disturbance activities and concrete loading and trucking activities at two areas of the site simultaneously on this day; therefore, HES deployed an additional three CAMP stations (1 upwind & 2 downwind) to effectively monitor the work activities occurring at different portions of the site on this day. HES conducted CAMP monitoring during concrete loading and trucking activities in the northern portion of the site and soil removal/grading activities in the hotel slab area of the site on this day. The full set of CAMP stations were deployed in the northern portion of the site for the concrete removal work and the additional three CAMP stations were set up around the soil disturbance activities in the area of the hotel slab. In accordance with the RAWP, four monitoring stations (upwind, two downwind, and

a location between the work area and the nearest occupied building) were set up around areas of the site where soil disturbance activities were conducted to collect particulate (Dust) and volatile organic compound (VOC) measurements. A total of seven CAMP stations were deployed at the site on this day. In addition, HES has an off-site CAMP monitoring station west of the site between the site and the Waverly Early Childhood Center. The CAMP station was situated on Morgan Street, near the intersection of Bellew Ave. for this monitoring event. The seven on-site monitoring stations were repositioned as needed based on the excavation areas where the contractor was working

Details of the CAMP monitoring procedures and the monitoring equipment used to conduct the CAMP are included in previous data summary memoranda.

Water and vapor/odor suppressant foam are available on-site in the event there is a release of dust or VOCs from site activities. On Wednesday March 29, 2017, neither water nor foam were required for odors or vapors emanating from the excavation areas. There were no noticeable visible dusts released from the work activities during this monitoring event.

A NYSDEC representative was on site on Wednesday March 29, 2017 to observe the concrete loading and removal activities, the soil removal and grading activities, and monitoring activities in and around the work area. During this monitoring event there were no exceedances of the CAMP alert triggers at any of the eight operating CAMP stations during site excavation activities. None of the dust or VOC concentrations approached the action levels requiring a work stoppage or corrective measures due to soil disturbance or concrete loading activities.

It should be noted that the PIDs at the two downwind stations in the northern area (Sta. #1 and Sta. #1) did not transmit data to the Environet site until approximately 1130 (transfer cable was not hooked up). HES collected hourly readings at these two station as follows:

- 0830; 0.0 ppm
- 0930; 0.0 ppm
- 1030; 0.0 ppm
- 1130; 0.0 ppm

Currently there are three full 20-yd roll-offs and one partially filled roll-off containing the source materials from the SA-3 excavation (antiperspirant spray cans and jars of antiperspirant cream). The roll-offs are covered with vinyl covers secured in place with elastic tie-down cords; the contractor is waiting for direction and approval from their disposal facilities for the proper disposal of this source material.

The fuel tanks encountered in the SA-1 excavation area on March 06, 2017 remain covered with plastic; there were no reported noticeable fuel or gasoline odors in this area. The contractor is arranging for a tank removal company to remove and properly dispose of the two fuel tanks.

Below is a summary table for the 03/29/2017 CAMP monitoring event.

Date: 03/29/17

CAMP Data	Upwind (Sta. 7)	Downwind (Sta. 1)	Downwind (Sta. 4)	Buildings (Sta. 2)	Morgan Str. (Sta. 5)
VOCs (ppm)					
Min. 15-min. Ave.	0.00	0.00	0.00	0.00	0.00
Max. 15-min. Ave.	0.13	0.00	0.03	0.10	0.24
Overall Ave.	0.05	0.00	0.01	0.05	0.00
Dust (mg/m³)					
Min. 15-min. Ave.	0.0001	0.0000	0.0000	0.0000	0.0000
Max. 15-min. Ave.	0.0059	0.0789	0.0553	0.0077	0.0055
Overall Ave.	0.0028	0.0140	0.0121	0.0028	0.0015

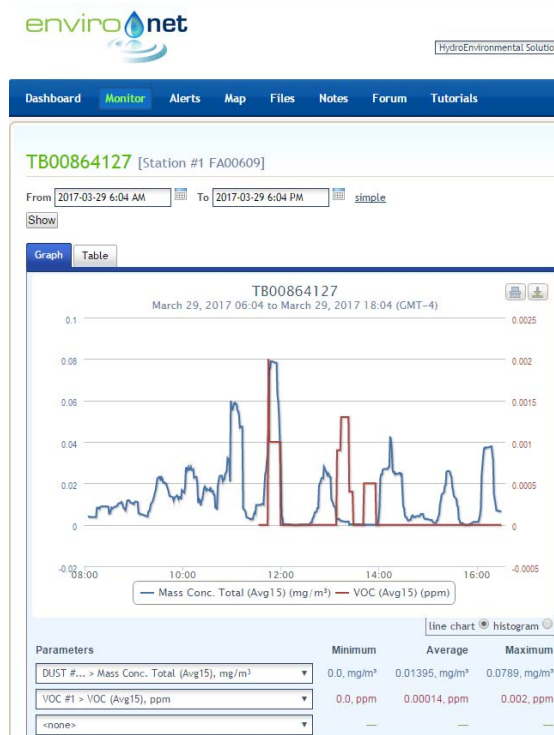
Date: 03/29/17

CAMP Data	Add'l Upwind (Sta. 8)	Add'l Downwind (Sta. 6)	Add'l Downwind (Sta. 9)
VOCs (ppm)			
Min. 15-min. Ave.	0.00	0.00	0.00
Max. 15-min. Ave.	0.00	0.00	0.18
Overall Ave.	0.00	0.00	0.03
Dust (mg/m³)			
Min. 15-min. Ave.	0.0000	0.0000	0.0027
Max. 15-min. Ave.	0.0100	0.0057	0.0207
Overall Ave.	0.0044	0.0011	0.0087

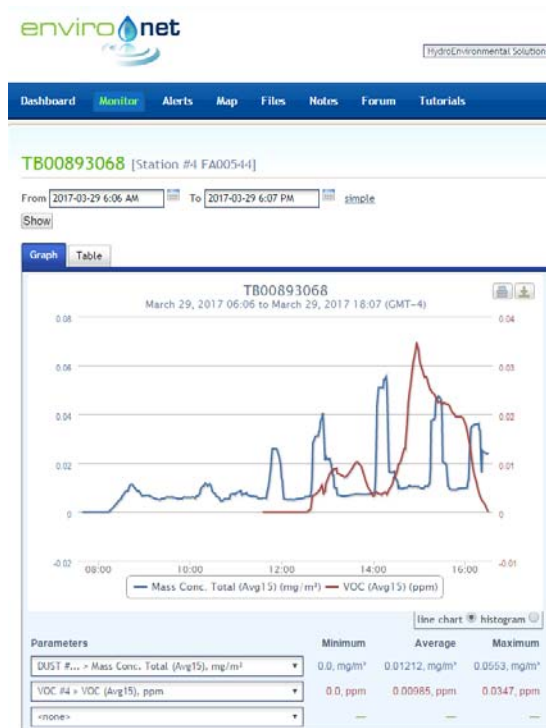
EnviroNet CAMP Data Summary Graphs



03/29/17 - Station #7 (Upwind)



03/29/17 - Station #1 (Downwind)



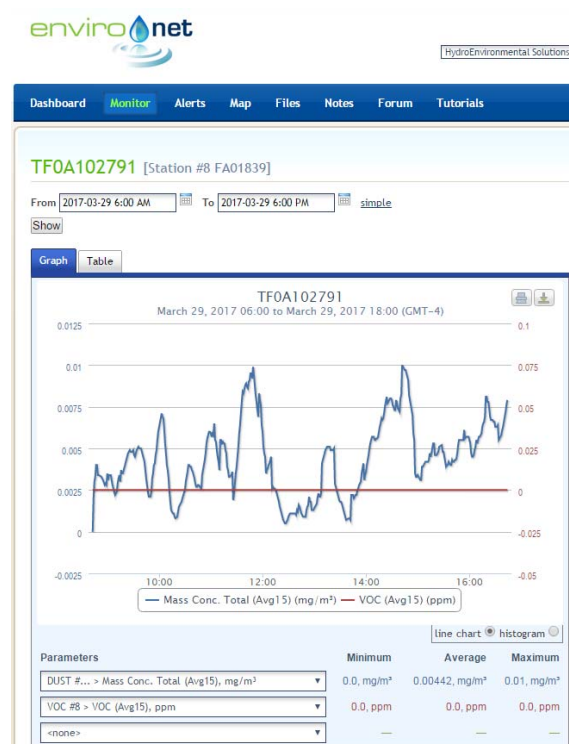
03/29/17 - Station #4 (Downwind)



03/29/17 - Station #2 (Near Buildings)



03/29/17 - Station #5 (Morgan Street)



03/29/17 - Station #8 (Additional Upwind)



03/29/17 - Station #6 (Additional Downwind)



03/29/17 - Station #9 (Additional Downwind)



Memo

Date: March 31, 2017

Project: BCP Site # C360143

To: Village of Tuckahoe

From: John Guzewich, HDR

Subject: Summary of CAMP Results During Site Work
109-125 Marbledale Road
Tuckahoe, New York
March 30, 2017

This memorandum was prepared by HDR to provide a review of the Community Air Monitoring Plan (CAMP) implementation during Thursday March 30, 2017 site work. The remediation contractor was conducting some concrete removal work in the northern area of the site (concrete loaded onto trucks and removed from the site). The contractor re-secured the plastic sheeting in areas where required. On this day HES deployed one set of CAMP stations to monitor site activities being conducted by the contractor at the north area of the site. A total of 14 truck loads of concrete rubble were removed from the site on this day.

A NYSDEC representative was on site to observe site activities on this day. It was confirmed that the CAMP monitoring stations were appropriately re-positioned as needed during the course of the day to account for the above-described work and locations of intrusive work.

There were no NYSDEC “off-site” work activities on this day.

DATA EVALUATION AND INTERPRETATIONS

In accordance with the RAWP, a CAMP is required during site activities involving soil disturbance activities. HES conducted CAMP monitoring during the concrete removal and truck loading activities in the northern portion of the site. In accordance with the RAWP, four monitoring stations (upwind, two downwind, and a location between the work area and the nearest occupied building) are to be set up on-site to collect particulate (Dust) and volatile organic compound (VOC) measurements. In addition, HES has a 5th CAMP monitoring station off-site between the site and the Waverly Early Childhood Center. The CAMP station was situated on Morgan Street, near the intersection of Bellew Avenue for this monitoring event. The onsite monitoring stations were repositioned as needed based on the areas where the contractor was working.

Details of the CAMP monitoring procedures and the monitoring equipment used to conduct the CAMP are included in previous data summary memoranda.

Water and vapor/odor suppressant foam are available on-site in the event there is a release of dust or VOCs from site activities. On Thursday March 30, 2017, neither water nor foam were required for odors or vapors emanating from the excavation areas. There were no noticeable visible dusts released from the work activities during this monitoring event. The contractor was wetting down the concrete as it was loaded into the trucks as needed to reduce the potential for generating dust.

A NYSDEC representative was on site on Thursday March 30, 2017 to observe the concrete loading and removal activities, and monitoring activities in and around the work area. During this monitoring event there were no exceedances of the CAMP alert triggers at any of the five operating CAMP stations during site activities. None of the dust or VOC concentrations approached the action levels requiring a work stoppage or corrective measures due to concrete removal and loading activities.

It should be noted that Station #1 (Downwind) was not transmitting VOC or Dust data to the Environet site until approximately 1030. HES collected hourly readings at these two station as follows:

- 0830; 0.0 ppm VOCs; 0.0250 mg/m³ Dust
- 0930; 0.0 ppm VOCs; 0.0030 mg/m³ Dust
- 1030; 0.0 ppm VOCs; 0.0030 mg/m³ Dust

Currently there are three full 20-yd roll-offs and one partially filled roll-off containing the source materials from the SA-3 excavation (antiperspirant spray cans and jars of antiperspirant cream). The roll-offs are covered with vinyl covers secured in place with elastic tie-down cords; the contractor is waiting for direction and approval from their disposal facilities for the proper disposal of this source material.

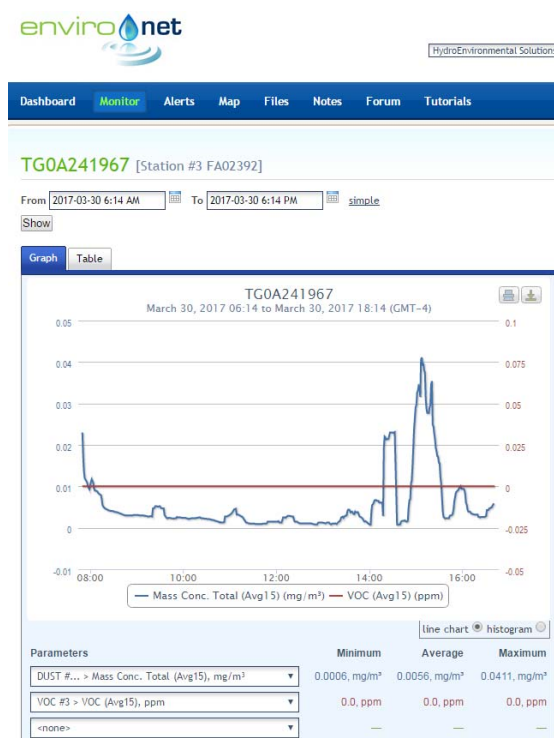
The fuel tanks encountered in the SA-1 excavation area on March 06, 2017 remain covered with plastic; there were no reported noticeable fuel or gasoline odors in this area. The contractor is arranging for a tank removal company to remove and properly dispose of the two fuel tanks.

Below is a summary table for the 03/30/2017 CAMP monitoring event.

Date: 03/30/17

CAMP Data	Upwind (Sta. 3)	Downwind (Sta. 1)	Downwind (Sta. 4)	Buildings (Sta. 2)	Morgan Str. (Sta. 5)
VOCs (ppm)					
Min. 15-min. Ave.	0.00	0.00	0.00	0.00	0.00
Max. 15-min. Ave.	0.00	0.01	0.06	0.01	0.07
Overall Ave.	0.00	0.00	0.00	0.01	0.02
Dust (mg/m³)					
Min. 15-min. Ave.	0.0006	0.0021	0.0000	0.0000	0.0000
Max. 15-min. Ave.	0.0411	0.0155	0.0497	0.0147	0.0095
Overall Ave.	0.0056	0.0061	0.0147	0.0064	0.0056

Environet CAMP Data Summary Graphs



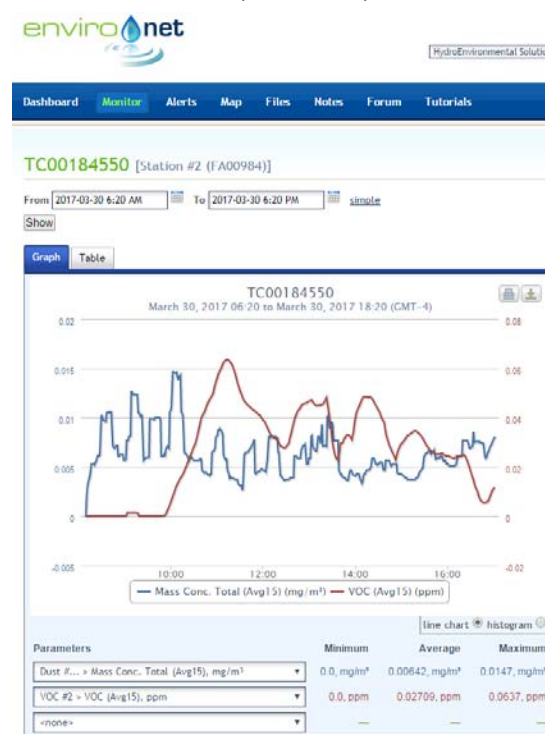
03/30/17 - Station #3 (Upwind)



03/30/17 - Station #1 (Downwind)



03/30/17 - Station #4 (Downwind)



03/30/17 - Station #2 (Near Buildings)

Marbledale Road BCP Site
Summary of CAMP Results (03/30/17)
March 31, 2017

Page 5



03/30/17 - Station #5 (Morgan Street)



Memo

Date: April 04, 2017

Project: BCP Site # C360143

To: Village of Tuckahoe

From: John Guzewich, HDR

Subject: Summary of CAMP Results During Site Work
109-125 Marbledale Road
Tuckahoe, New York
March 31, 2017

This memorandum was prepared by HDR to provide a review of the Community Air Monitoring Plan (CAMP) implementation during Friday March 31, 2017 site work. On this day HES deployed two sets of CAMP stations (one additional upwind station, two additional downwind stations, and 1 additional near building station) so that they would be able to effectively monitor work being conducted by the contractor at the north area of the site and south area of the site simultaneously. The remediation contractor was conducting some concrete removal work in the northern area of the site (concrete loaded onto trucks and removed from the site) and a subcontractor was pumping out the contents of the two fuel tanks that were encountered in the SA-1 excavation. The contractor re-secured the plastic sheeting in areas where required. A total of 16 truck loads of concrete rubble were removed from the site on this day.

An HDR representative was on site to observe site activities on this day. It was confirmed that the CAMP monitoring stations were appropriately re-positioned as needed during the course of the day to account for the above-described work and locations of intrusive work.

There were no NYSDEC "off-site" work activities on this day.

DATA EVALUATION AND INTERPRETATIONS

In accordance with the RAWP, a CAMP is required during site activities involving soil disturbance activities. As noted previously, the contractor was planning to conduct concrete loading and trucking activities at the northern portion of the site and a subcontractor was on site to pump out the contents of the two underground storage tanks (USTs) in the SA-1 area by the southern entrance to the site at the same time. Therefore, HES deployed an additional four CAMP stations (1 upwind, 2 downwind, & 1 near building) to effectively monitor the work activities occurring at different portions of the site on this day. The CAMP stations were deployed in the northern portion of the site for the concrete removal work and the UST area while the tanks were being pumped out. In accordance with the RAWP, four monitoring stations (upwind, two downwind, and a location between

the work area and the nearest occupied building) were set up around areas of the site where soil disturbance activities were conducted to collect particulate (Dust) and volatile organic compound (VOC) measurements. A total of eight CAMP stations were deployed at the site on this day. In addition, HES has an off-site CAMP monitoring station west of the site between the site and the Waverly Early Childhood Center. The CAMP station was situated on Morgan Street, near the intersection of Bellew Ave. for this monitoring event. The eight on-site monitoring stations were repositioned as needed based on the excavation areas where the contractor was working.

Details of the CAMP monitoring procedures and the monitoring equipment used to conduct the CAMP are included in previous data summary memoranda.

Water and vapor/odor suppressant foam are available on-site in the event there is a release of dust or VOCs from site activities. On Friday March 31, 2017, neither water nor foam were required for odors or vapors emanating from the work areas. There were no noticeable visible dusts released from the work activities during this monitoring event. It rained for a majority of the monitoring event on this day; there were no visible dust released from the work activities on this day.

An HDR representative was on site on Friday March 31, 2017 to observe the concrete loading and removal activities, the fuel tank pump-out activities, and monitoring activities in and around the work area. During this monitoring event there were no exceedances of the CAMP alert triggers at any of the eight operating CAMP stations during site activities. None of the dust or VOC concentrations approached the action levels requiring a work stoppage or corrective measures due to concrete removal and loading activities.

It should be noted that Station #6 (Additional Downwind) was not transmitting VOC data to the Environet website. This station was set up to monitor the tank pump-out activities. The UST pump-out activities were conducted between 10:00 and 11:30 am. HES collected hourly readings at Station #6 as follows:

- 0930; 0.0 ppm VOCs; 0.0060 mg/m³ Dust
- 1030; 0.0 ppm VOCs; 0.0050 mg/m³ Dust
- 1130; 0.0 ppm VOCs; 0.0040 mg/m³ Dust

Currently there are three full 20-yd roll-offs and one partially filled roll-off containing the source materials from the SA-3 excavation (antiperspirant spray cans and jars of antiperspirant cream). The roll-offs are covered with vinyl covers secured in place with elastic tie-down cords; the contractor is waiting for direction and approval from their disposal facilities for the proper disposal of this source material.

The fuel tanks encountered in the SA-1 excavation area on March 06, 2017 were pumped out on this day and are scheduled to be removed and taken off site for removal on Monday April 03, 2017. After the contents of the tanks were removed and the tanks were covered with plastic again, there were no reported noticeable fuel or gasoline odors in this area.

Below is a summary table for the 03/31/2017 CAMP monitoring event.

Date: 03/31/17

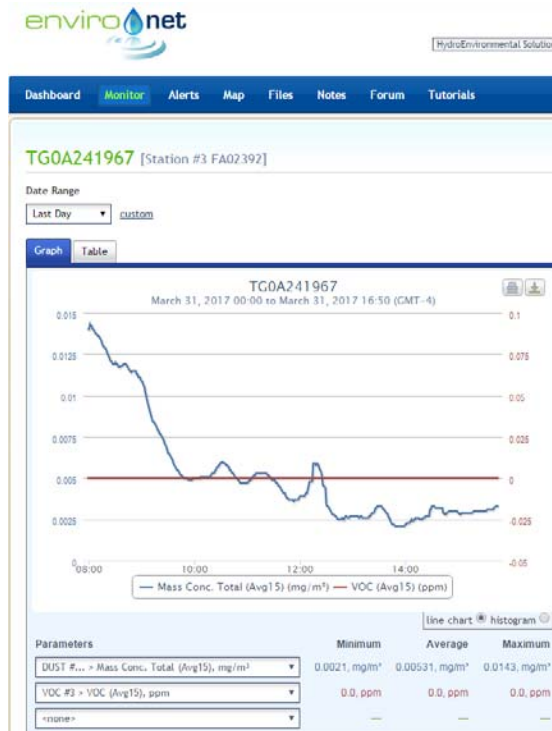
CAMP Data	Upwind (Sta. 3)	Downwind (Sta. 1)	Downwind (Sta. 4)	Buildings (Sta. 2)	Morgan Str. (Sta. 5)
VOCs (ppm)					
Min. 15-min. Ave.	0.00	0.00	0.00	0.00	0.00
Max. 15-min. Ave.	0.00	0.05	0.03	0.00	0.07
Overall Ave.	0.00	0.02	0.01	0.00	0.02
Dust (mg/m³)					
Min. 15-min. Ave.	0.0021	0.0000	0.0048	0.0029	0.0000
Max. 15-min. Ave.	0.0143	0.0995	0.0505	0.0087	0.0095
Overall Ave.	0.0053	0.0194	0.0178	0.0048	0.0056

Date: 03/31/17

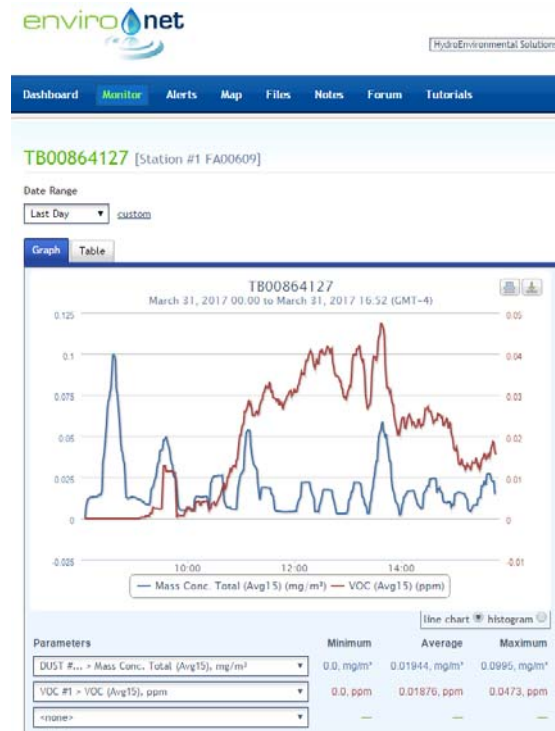
CAMP Data	Add'l Upwind (Sta. 7)	Add'l Downwind (Sta. 6) *	Add'l Downwind (Sta. 9)	Add'l Buildings (Sta. 8)
VOCs (ppm)				
Min. 15-min. Ave.	0.00	-	0.00	0.00
Max. 15-min. Ave.	0.02	-	0.85	0.04
Overall Ave.	0.01	-	0.09	0.01
Dust (mg/m³)				
Min. 15-min. Ave.	0.0087	0.0043	0.0085	0.0035
Max. 15-min. Ave.	0.0210	0.0165	0.0466	0.0150
Overall Ave.	0.0129	0.0082	0.0155	0.0087

* The PID at Station #6 was not transmitting data to the Environet website during the pump-out activities.

Environet CAMP Data Summary Graphs



03/31/17 - Station #3 (Upwind)



03/31/17 - Station #1 (Downwind)



03/31/17 - Station #4 (Downwind)



03/31/17 - Station #2 (Near Buildings)



03/31/17 - Station #5 (Morgan Street)



03/31/17 - Station #7 (Additional Upwind)



03/31/17 - Station #6 (Additional Downwind)



03/31/17 - Station #9 (Additional Downwind)

Marbledale Road BCP Site
Summary of CAMP Results (03/31/17)
April 04, 2017

Page 6



03/31/17 - Station #8 (Additional Near Buildings)